

Effect of finite container size on granular jet formationStefan von Kann,¹ Sylvain Joubaud,^{1,2} Gabriel A. Caballero-Robledo,^{1,3} Detlef Lohse,¹ and Devaraj van der Meer¹¹*Physics of Fluids group, University of Twente, P.O. Box 217, 7500 AE Enschede, The Netherlands*²*Laboratoire de Physique de l'École Normale Supérieure de Lyon, CNRS–Université de Lyon, F-69364 Lyon, France*³*Centro de Investigación en Materiales Avanzados S. C., Nuevo León, Mexico*

(Received 11 November 2009; published 28 April 2010)

When an object is dropped into a bed of fine, loosely packed sand, a surprisingly energetic jet shoots out of the bed. In this work we study the effect that boundaries have on the granular jet formation. We did this by (i) decreasing the depth of the sand bed and (ii) reducing the container diameter to only a few ball diameters. These confinements change the behavior of the ball inside the bed, the void collapse, and the resulting jet height and shape. We map the parameter space of impact with Froude number, ambient pressure, and container dimensions as parameters. From these results we propose an explanation for the thick-thin structure of the jet reported by several groups ([J. R. Royer *et al.*, *Nat. Phys.* **1**, 164 (2005)], [G. Caballero *et al.*, *Phys. Rev. Lett.* **99**, 018001 (2007)], and [J. O. Marston *et al.*, *Phys. Fluids* **20**, 023301 (2008)]).

DOI: [10.1103/PhysRevE.81.041306](https://doi.org/10.1103/PhysRevE.81.041306)

PACS number(s): 45.70.-n, 47.55.Lm, 47.57.Gc

I. INTRODUCTION

Granular materials consist of discrete particles which interact mainly through contact forces. In large quantities they can behave like a solid, a liquid, or a gas but often behave differently from what would be expected of these phases [1]. A marked example is the impact of an object on a bed of sand. When dry air is blown through such a bed all contact forces between the individual particles are broken and after slowly turning off the air flow, the bed settles into an extremely loosely packed solidlike state. When a ball is dropped in such a bed, one observes a splash and a jet, strikingly similar to the ones that are seen when the same object is dropped into a liquid.

Research interest in this granular jet started when Thoroddsen and Shen first reported this phenomenon in 2001 [2], in a study with the objective to gain insight into the importance of surface tension on jetting in general and the properties of flowing granular materials. Since these results, several aspects of the formation of the granular jet have been studied. The influence of the impact velocity onto the jet height for impacts on a bed of very loose sand was investigated in [3]. Using a pseudo-two-dimensional setup, numerical simulations and comparisons to water impact experiments, a model for the jet formation was proposed that is based on cavity collapse: The impacting ball creates a cavity in the sand bed which collapses due to the hydrostatic pressure in the sand and leads to two vertical jets. One jet is observable above the bed and the other one is going down into the bed [3]. The series of events is concluded by a “granular eruption” at the surface of the sand, which was attributed to the surfacing of an air bubble that is entrapped during the collapse.

The influence of the ambient pressure on the formation of a granular jet was first studied by Royer *et al.* [4]. They observed that at lower ambient pressures the jet reaches less high and also reported a puzzling thick-thin structure at lower pressures. Using x-ray radiographic measurements, they were able to look inside the bed and then proposed the following mechanism to explain this structure: the thick jet is

caused by the compressed air in the cavity pushing up bed material, forming the thick part of the jet [4–6]. The thin jet was attributed to the hydrostatic collapse as formulated in [3]. Subsequently, the thick-thin structure was also observed by increasing the ball size in the same container, which suggests—in contrast to the earlier explanation—that the structure may be a boundary effect [7]. Marston *et al.* also found a thick-thin structure by decreasing the packing fraction, and they too found that this effect is more pronounced for a larger ball [8]. It is the exploration of the formation of this thick-thin structure that constitutes the main motivation for the work described in the current paper.

In parallel to the research concerning the formation of the granular jet, quite some effort was made to understand the motion of an object moving through a granular medium. Different drag force laws were proposed [9–15], culminating in a model containing a hydrostatic term that linearly depends on the depth inside the bed and a dynamic term which is proportional to the square of the velocity of the object [14,15]. The influence of the ambient air pressure on this trajectory was investigated in [5,7] where it was shown that the drag force reduces at high ambient pressure. Another important issue is the interaction between the impacting ball and the container boundaries. Nelson *et al.* found that “the presence of sidewalls causes less penetration and an effective repulsion” [16,17].

In this paper, we present experiments in which the size of the container has been systematically reduced. We did this by (i) decreasing the depth of the sand bed (Sec. IV) and (ii) reducing the container diameter to only a few ball diameters (Sec. V). We explore how these confinements change the behavior of the ball inside the bed, the void collapse, the resulting jet height and shape, and the presence of a granular eruption, which was only observed in part of the parameter space covered in this study. All of the observed phenomena are explained within the context of a simple hydrostatic collapse model [3] together with a drag law for the trajectory of the ball inside the sand [15]. Finally, we propose an explanation for the presence of an eruption and a new mechanism for the thick-thin structure reported by several groups mentioned above.

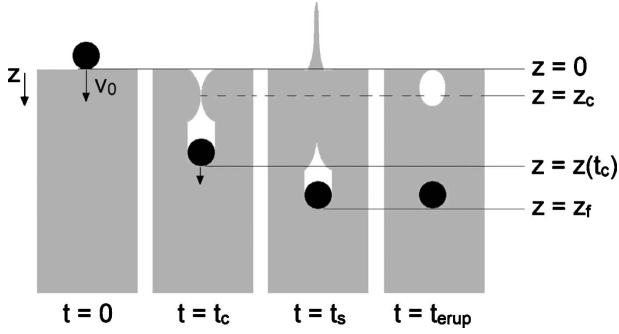


FIG. 1. Schematic representation of the impact of a ball into a sand bed, indicating the time and length scales that play an important role in the analysis of the experimental work in this paper, as described in the main text.

The paper is organized as follows: In Sec. II we start with the introduction of the drag law and the hydrostatic collapse model that lie at the heart of the analysis of this paper. Subsequently we discuss our experimental setup in Sec. III after which we present our results for impacts in confined settings. In Sec. IV we discuss the influence of the proximity of the bottom, after which we turn to the influence of the side walls in Sec. V. Finally, in Sec. VI we discuss the thick-thin structure and end with conclusions in Sec. VII.

II. DRAG LAW AND HYDROSTATIC COLLAPSE MODEL

In this section we review the drag law and the Rayleigh-type collapse model that constitute the ingredients of the hydrostatic collapse model first introduced in [3] and form the theoretical backbone against which the experiments will be analyzed.

Before doing so let us briefly recall the succession of events observable after an impact of a sphere on a bed of fine, loose grains. These events are schematically represented in Fig. 1 and involve the introduction of several time and length scales that are crucial to the analysis in the following sections. At a time $t=0$, the sphere impacts on the granular medium with a velocity v_0 . A splash is created and the ball penetrates into the sand bed. The void created by the ball collapses in a time t_c (closure time) and a jet shoots out of the sand at the position of the impact. The closure depth—also known as the pinch-off point—is denoted as z_c and the position of the ball inside the sand at that time as $z(t_c)$. Meanwhile, the ball moves downward inside the sand bed. After a time t_s , the ball reaches its final depth z_f and stops. Finally, a granular eruption is seen at the surface at $t=t_{erup}$, which, after comparison to two-dimensional (2D) experiments, has been attributed to an entrapped air bubble which slowly rises inside the sand bed and reaches the surface [18].

We now turn to the hydrostatic collapse model we use to explain the observed phenomena. Its first ingredient concerns the motion of the ball with diameter d through the sand bed. To describe the trajectory of the ball ($z(t)$ is the depth of the ball at a time t), we use the law introduced by Tsimring [14] and Katsuragi [15]. The drag force is decomposed into two terms: The first one, the hydrostatic term, involves Coulomb

friction as well as the force needed to displace material against the hydrostatic pressure and is proportional to the depth and was introduced in this context in [11]. We here write $F_{hydrostatic} = \kappa z$, where κ is a constant. The second term is a quadratic drag independent of the depth, $F_{dynamic} = \alpha v^2$, interpreted as the force required for the projectile to mobilize a volume of granular media with density ρ_g proportional to the volume of the ball [22]. Adding gravity, this leads to the equation of motion

$$m\ddot{z} = mg - \kappa z - \alpha v^2, \quad (1)$$

with initial conditions $z(0)=0$ and $\dot{z}(0)=v_0$.

The second ingredient regards the dynamics of the hydrostatic collapse of the void that is formed by the ball. The radius of the void at a time t and a depth z , $R(z, t)$, evolves from the two-dimensional Rayleigh-type equation, in which, for each depth z , the collapse is driven by the hydrostatic pressure $\rho_g g z$ at that depth [3]

$$(R\ddot{R} + \dot{R}^2) \ln \frac{R}{R_\infty} + \frac{1}{2} \dot{R}^2 = g z, \quad (2)$$

where \dot{R} denotes the time derivative and R_∞ is a constant of the order of the system size. Under the assumption that the cavity that is created is approximately cylindrical, i.e., with the same diameter (d) as the impacting ball, the initial conditions are $R(0)=d/2$ and $\dot{R}(0)=0$. By rescaling lengths with the ball radius $d/2$ and time with $d/(2\sqrt{gz})$ (i.e., $\tilde{R} \equiv 2R/d$, $\dot{\tilde{R}} \equiv \dot{R}/\sqrt{gz}$, etc., where the dot on a dimensionless variable denotes a derivative with respect to dimensionless time), Eq. (2) can be written in dimensionless form

$$(\tilde{R}\ddot{\tilde{R}} + \dot{\tilde{R}}^2) \ln \frac{\tilde{R}}{\tilde{R}_\infty} + \frac{1}{2} \dot{\tilde{R}}^2 = 1, \quad (3)$$

together with initial conditions $\tilde{R}(0)=1$ and $\dot{\tilde{R}}(0)=0$. With these initial conditions this equation has a unique solution $\tilde{R}(\tilde{t})$, from which we obtain a constant dimensionless collapse time \tilde{t}_{coll} . It now follows immediately that the (dimensional) collapse time $t_{coll} [= \tilde{t}_{coll} d / (2\sqrt{gz})]$ scales as $d / (2\sqrt{gz})$.

We can combine the above two ingredients to determine the position and the time of closure. The total time that elapses from the impact to the collapse of the cavity at any depth z is given by

$$t_{tot}(z) = t_{pass}(z) + t_{coll}(z), \quad (4)$$

where t_{pass} is the amount of time the ball takes to reach depth z (obtained from solving the drag law) and t_{coll} is the time needed for the collapse at a depth z . The closure depth z_c is the depth which minimizes Eq. (4). The closure time corresponds to the total time at the closure depth [$t_c \equiv t_{tot}(z_c)$].

Finally, as argued in [7] within the context of the hydrostatic collapse model, the jet height h_{jet} is expected to be proportional to the closure depth z_c . This is because the pressure that drives the collapse must be proportional to the pressure that builds up after collapse along the vertical axis,

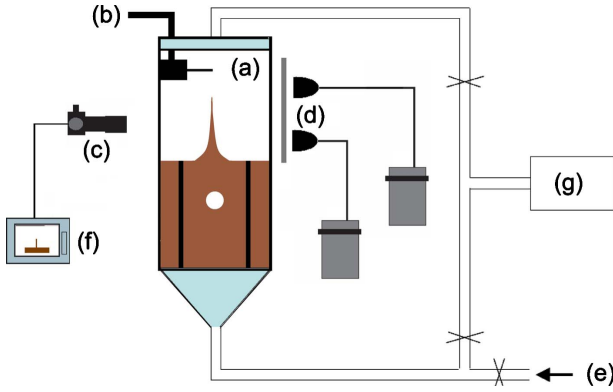


FIG. 2. (Color online) Setup: (a) perspex container, $14 \times 14 \times 100$ cm³, (b) pneumatic release mechanism, (c) Photron Ultima APX-RS, (d) two light sources with diffusing plate, (e) pressurized, dry air source, (f) computer, and (g) vacuum pump with pressure gauges.

which pushes out the jet. Consequently, the initial jet velocity v_{jet} is expected to scale as the square root of the closure depth $v_{jet} = C\sqrt{gz_c}$.

III. EXPERIMENTAL SETUP

In the previous section, we have introduced the theoretical framework for the analysis of the phenomenon. We now turn to the description of the experimental setup, which is sketched in Fig. 2. It consists of a container with a height of 1 m and a square cross section of 14×14 cm², which is filled with sand grains, nonspherical and slightly polydisperse in size (between 20 and 60 μ m); the density of the granular medium is 2.21 g/cm³ and its angle of repose 26°. As described in [7], before each experiment, the sand is fluidized by blowing pressurized dry air through a sintered plate at the container bottom. After slowly turning off the air flow, the bed reproducibly settles into a static, loose, weakened state (volume fraction 41%). The airtight system can be slowly evacuated to perform experiments at lower ambient pressures p (the pump speed is low enough not to irreversibly alter the packing fraction). Then a steel ball of diameter $d=1.6$ cm and mass $m=16.5$ g is dropped into the sand from different heights H which control the impact velocity $v_0 = \sqrt{2gH}$, where g is the acceleration of gravity. Thus, the impactor is characterized by a single dimensionless number, the Froude number (Fr), defined as $Fr = 2v_0^2 / (gd) = 4H/d$.

The impact is recorded with a high-speed camera (Photron Ultima APX-RS) at 1500 frames per second. For the measurements a uniform lighting from behind is needed to obtain better movies with higher contrast between the objects and the background. This is realized by positioning two light sources and a diffusing plate behind the container.

In order to obtain the trajectory of the sphere inside the sand, we attach a wire with markers which remain above the sand during impact and are imaged with the high-speed camera. This procedure is explained in greater detail in Sec. V A.

We use two ways to confine the impact and jet formation experiment. First of all, we study the influence of the bottom

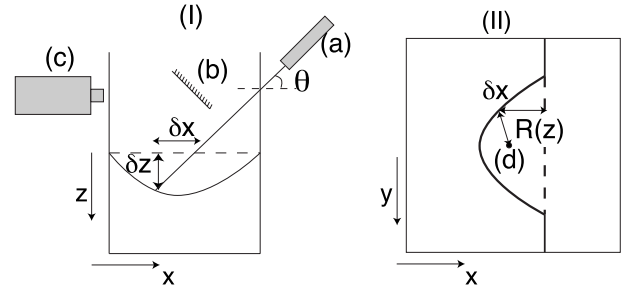


FIG. 3. (I) Laser profilometer. A diode laser sheet (a) is directed onto the surface at an angle θ . Using a mirror (b) and a high-speed camera (c), images of the surface are recorded. (II) Schematic view of the resulting surface. The dashed line represents the laser sheet when the surface is flat and the continuous line the laser sheet when the surface is perturbed. The local deviation $\delta x = x(y) - x_l$ of the laser sheet is related to the vertical coordinate $\delta z = z(y)$ of the surface. (d) is the center of the cavity, from which the cavity radius $R(z)$ can be deduced.

of the container by reducing the height at which the container is filled with sand down to a few ball diameters (Sec. IV). Second, to investigate the influence of the closeness of the side walls, we insert PVC cylinders of varying diameters into the sand, such that the cylinder axis coincides with the trajectory of the ball inside the sand. In this procedure sufficient care was taken that the presence of the cylinder did not disturb the fluidization and settling process of the sand bed (Sec. V).

Time and position of collapse

When traveling through the sand bed, the ball creates a cavity. The shape of the cavity is obtained using a profilometer similar to the one described in [19] (see Fig. 3). A diode laser sheet with wavelength of 680 nm strikes the granular media at an angle θ , fixed arbitrarily at 55°. Using a mirror and a high-speed camera, we can measure the horizontal projection of the points where the laser sheet touches the sand from above. When the surface is flat, this projection is a straight line parallel to the y direction; the coordinate of a point on this straight line is (x_l, y) . When the surface is perturbed, the projection appears to be a curved line. For any point on this line with coordinate $(x(y), y)$, the depth of the surface can be deduced—as a function of y —from x_l and $x(y)$

$$z(y) = [x(y) - x_l] \tan(\theta). \quad (5)$$

If we assume rotational symmetry of the cavity around the center of the ball [denoted as (x_c, y_c)] we can in addition deduce the radius of the cavity at all these depths $z(y)$

$$R(z(y)) = \sqrt{[x(y) - x_c]^2 + (y - y_c)^2}. \quad (6)$$

By analyzing each of the high-speed imaging recordings in this way, we can obtain the cavity profile $R(z, t)$ as a function of both depth z and time t (up to a certain maximum depth that is set by the laser sheet angle θ).

TABLE I. Results obtained at $Fr=70$ and $p=1$ bar in the usual unconfined case, i.e., in a deep bed with $h_{bed}=18.8d$. These values will be used as reference values in the discussion of the experimental results.

Final depth z_f	Stopping time t_{stop}	Collapse time t_c
$11d$	110 ms	51 ms
Closure depth z_c	Jet height h_{jet}	Eruption time t_{erup}
$2d$	$18.5d$	510 ms

IV. INFLUENCE OF THE BOTTOM: A SHALLOW BED

Now that we have introduced the experimental setup, we will continue with the discussion of our results: In this section we start with what is observed in a less-filled container (i.e., a shallow sand bed) and in the next section proceed with the discussion of what happens when the diameter of the system is decreased.

Before turning to the case in which the proximity of the container bottom becomes important, let us first recall in Table I the results obtained in the usual unconfined case, here at $Fr=70$ and ambient pressure: the container is large enough ($D=14\text{ cm} \gg d$) to avoid any effect of the surrounding walls and deep enough (the height of the sand bed, h_{bed} is around 30 cm, that is $18.8d$) such that the bottom has no influence.

We modified the height of the sand bed, h_{bed} by simply adjusting the amount of sand in the container. The first and most conspicuous effect is that below a certain depth of the sand bed the impacting sphere is stopped abruptly by its collision with the container bottom, rather than slowly being stopped by drag as what happens in the unconfined case. In this way, decreasing the depth of the sand bed allows us to

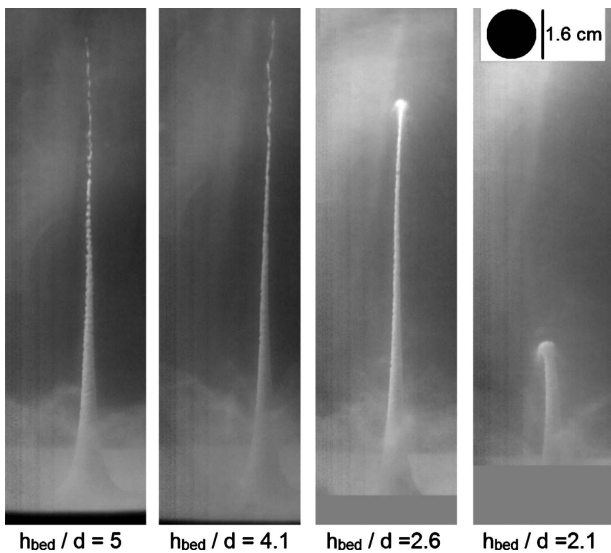


FIG. 4. Influence of the height of the sand bed h_{bed} on the shape and height of the jet for $Fr=70$ and $p=1$ bar: Images of the jet, taken at 0.12 s after the ball impact for four different bed heights, decreasing from left to right. Below a threshold there is a clear change in height and width of the jet.

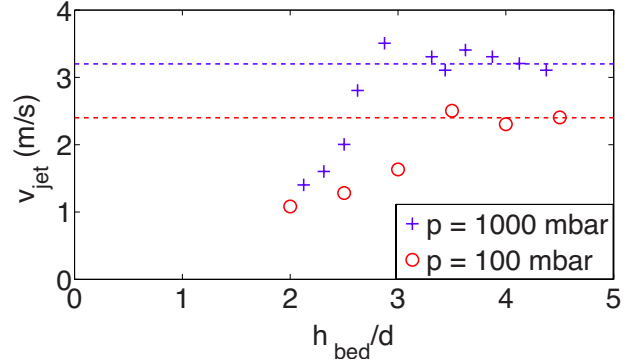


FIG. 5. (Color online) Initial velocity of the jet, v_{jet} as a function of the height of the sand bed, h_{bed} for $Fr \sim 70$ and $p=1000$ mbar (+) and $p=100$ mbar (○). There is a sharp threshold below which the initial jet velocity rapidly decreases. The dashed lines represent the undisturbed values of v_{jet} , measured in a deep bed ($h_{bed} = 18.8d$).

look at the influence of the final depth of the ball, z_f , and the cavity size on the jet and the eruption.

A. Influence on the jet

In Fig. 4, we show four images from the jet formed when the ball is dropped into the sand bed for $Fr=70$ and ambient pressure. While reducing h_{bed} , there is no change in the jet shape or height down to a certain threshold. Below this threshold, the jet reaches less high and becomes broader, most notably at the top. The maximum height of the jet, h_{jet} , is obtained by measuring the initial jet velocity v_{jet} as soon as it appears above the surface of the sand (using energetic arguments, $h_{jet} \propto v_{jet}^2$). The initial jet velocity v_{jet} is plotted as a function of h_{bed} in Fig. 5: For h_{bed} higher than $3d$, v_{jet} saturates to its undisturbed value of approximately 3.2 m/s. Reducing h_{bed} below $3d$, v_{jet} decreases rapidly. When we reduce the ambient pressure to $p=100$ mbar, we find the same behavior (see Fig. 5) although the crossover takes place at a slightly higher value of h_{bed} . Remarkably, in both cases this decrease does not happen at the depth at which the ball is stopped by the bottom (which would be around $h_{bed} = 11d$ and $h_{bed}=6d$ for $p=1000$ mbar and $p=100$ mbar, respectively) but at a much lower depth of $h_{bed} \approx 3d$.

This can be explained as follows: The closure depth, z_c , remains unaltered by the presence of the bottom (which below $h_{bed}=11d$ only makes the ball stop earlier and less deep) until the bed depth becomes less than the sum between the position of the unconfined collapse ($2d$, see Table I) and the diameter of the ball. Below this value, the collapse happens on top of the ball leading to a less directional top of the jet which has a more or less spherical shape; moreover the closure depth decreases when the bed becomes smaller and so does the initial jet velocity.

B. Influence on the eruption

Providing that the void collapse does not happen directly at the ball, an air bubble is entrapped. The volume of this bubble can be estimated as

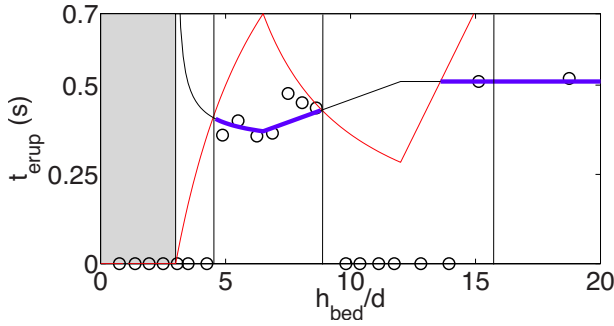


FIG. 6. (Color online) The time t_{erup} when the granular eruption at the surface starts is plotted as a function of the height of the sand bed h_{bed} , for $\text{Fr}=70$ and $p=1$ bar (black open circles). Measurement points with $t_{\text{erup}}=0$ correspond to those cases where no eruption was observed. The experimental regimes with and without eruption are separated by the vertical black lines. The grey region represents the region where no air bubble is entrapped. The thin blue and red lines represent the different time scales that are involved in the problem t_1 is the time the air bubble needs to reach the surface (black thin line) and t_2 is the time the air bubble needs to diffuse within the sand bed (red thin line). When t_1 is smaller than t_2 , an eruption is expected; this is depicted by the continuous thick blue line. The different regions obtained from the timescale argument qualitatively correspond to the experimental results. More details about the way in which t_1 and t_2 are estimated are provided in the main text and in footnote [23].

$$V_{\text{bubble}} \propto h_{\text{rad}}^2 [z(t_c) - z_c] \sim d^2 [z(t_c) - z_c], \quad (7)$$

where $z(t_c)$ is the position of the ball at closure and h_{rad} is the radial length scale of the bubble, which can be approximated by the diameter of the ball. The bubble slowly rises through the sand and can lead to a violent granular eruption. However, this eruption is not always observed. To study when and why this is the case, in Fig. 6 we plot the time between impact and eruption, t_{erup} , as function of the height of the sand bed, h_{bed} . (Note that measurement points with $t_{\text{erup}}=0$ correspond to those cases where no eruption was observed.) Up to a certain threshold, which is around $4.8d$, no eruptions can be observed. This can be attributed to the fact that, while rising, small air bubbles just dissolve into the sand bed before reaching the surface. When the bed gets deeper, the air bubble reaches a certain critical volume V^* , above which a granular eruption can be seen. From the experimental results, this size found to be around $V^* \sim d^2 [z(t_c) - z_c] \sim 3.8d^3$. Then remarkably, above $9d$ the eruptions disappear again and reappears only when $h_{\text{bed}} > 14d$.

This peculiar behavior can be understood, at least qualitatively, from the competition of the two time scales corresponding to the two mechanisms the air in the bubble has to escape from the bed:

(i) The bubble needs a time t_1 to reach the surface. First of all, for $h_{\text{bed}} < 3d$, the collapse happens on top of the ball, and no air bubble is entrapped. Between $3d$ and $5.5d$, the position of the ball at closure, $z(t_c)$, increases and so does the volume of the air bubble; in this region, t_1 decreases. While increasing the sand depth even further, the volume of the air bubble remains constant, but the initial position of the bubble is

deeper since the entrapped bubble will follow the ball until it stops. Therefore t_1 will increase until h_{bed} is equal to $11d$ which is the final depth of the ball in the unconfined case. Above this value, there is no change on the final depth and t_1 becomes independent of the depth of the sand bed. This is depicted by the thin black line in Fig. 6. More details about the way that t_1 is estimated are given in [23].

(ii) The air in the bubble trapped by the collapse escapes—in the dissolution time t_2 —through pressure driven flow through the porous bed. Factors that affect this process are the size of the bubble (which determines the amount of air that needs to escape), the pressure of the air (which approximately equals the hydrostatic pressure in the surrounding sand), and the length of the path the air needs to travel. For this last quantity we need to consider that air can both escape through the top and through the bottom of the bed, the latter due to the presence of the sintered plate. These factors combine into Darcy's law: $Q \propto \Delta P/H$, where the flow rate Q depends on the pressure difference ΔP driving the flow and the path length H . Turning to Fig. 6 again, for $h_{\text{bed}} < 3d$, no air bubble is entrapped. Between $3d$ and $5.5d$, $z(t_c)$ —and therefore the bubble size—increases, leading to a steep increase of the dissolution time t_2 . Upon increasing the sand depth beyond $5.5d$ the bubble size remains constant but the pressure inside the bubble increases. From Darcy's law we thus find that t_2 decreases. This continues until h_{bed} is equal to $11d$ beyond which the ball does not reach the bottom of the plate anymore. Note that until this point the shortest (and therefore chosen) path for the bubble to dissolve is towards the bottom of the container. If we now increase h_{bed} beyond $11d$ this shortest path starts to grow, and with the path, using Darcy's law, also the dissolution time. This is captured by the thin red line in Fig. 6. More details about the estimation of t_2 are provided in [23].

As a result, an eruption can be only seen if the time t_2 becomes larger than t_1 . This is expressed by the continuous thick blue line, in qualitative agreement with the experimental behavior.

V. INFLUENCE OF THE SIDE WALLS

In the previous section, we discussed the influence of the bottom of the cavity on the process of object penetration and jet formation and found that, if the sand depth is fixed at 30 cm, there is no effect of the bottom on the jet formation process. Fixing this bed depth, we now turn to study the effects of the side walls of the container on the complete series of events leading to the jet. For this, some cylinders of different diameters D are placed inside the sand during the fluidization process: we choose $D=4.2$ cm, 6 cm, 8.5 cm, 10 cm, and 12.5 cm. In this way we change the aspect ratio D/d from 2.6 to 7.8.

A. Ball trajectory

The first thing that happens upon impact of the ball onto the surface is that it penetrates and creates a void inside the sand bed. The question we ask in the next subsection concerns the influence of the container diameter on the drag

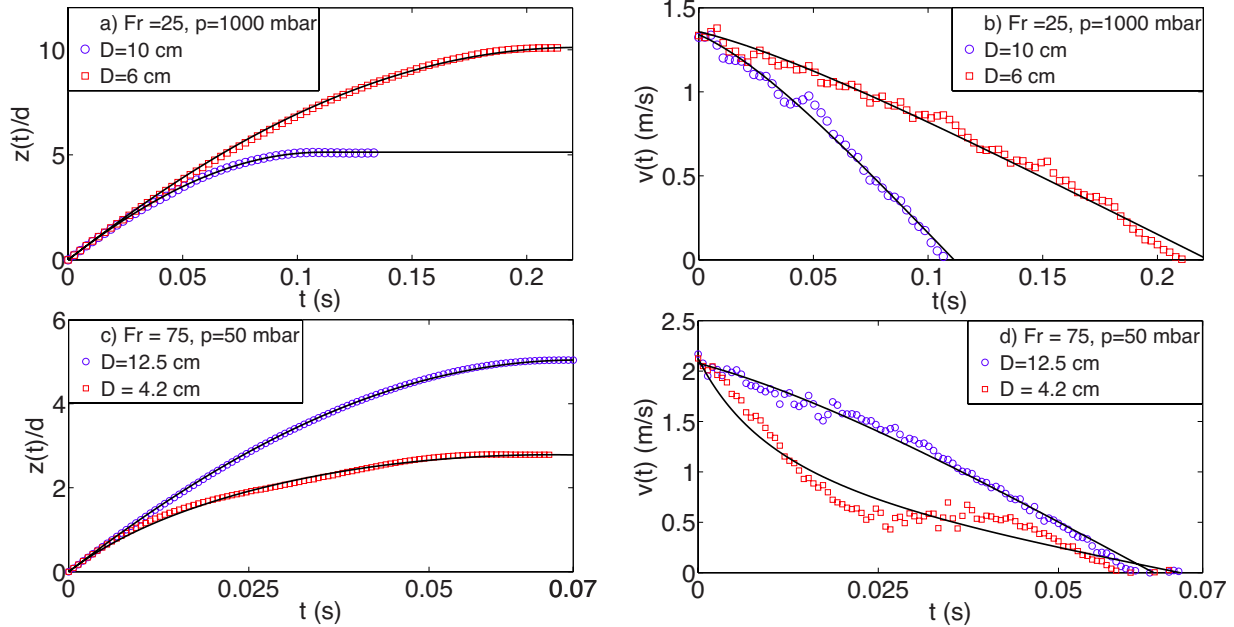


FIG. 7. (Color online) (top) Depth of the ball $z(t)$ (a) and its velocity $v(t)$ (b) as a function of time after impact for $Fr=25$, $p=1000$ mbar, $D=10$ cm (\circ) and $D=6$ cm (\square). The lines correspond to a fit using Eq. (1) with $\kappa=4.525$ N/m and $\alpha=0.132$ kg/m for $D=10$ cm and $\kappa=1.695$ N/m and $\alpha=0.118$ kg/m for $D=6$ cm. (bottom) Depth of the ball $z(t)$ (c) and its velocity $v(t)$ (d) as a function of time after impact t for $Fr=75$, $p=50$ mbar $D=4.2$ cm (\circ) and $D=12.5$ cm (\square). Again, the lines correspond to a fit using Eq. (1) with $\kappa=14$ N/m and $\alpha=0.281$ kg/m for $D=4.2$ cm and with $\kappa=13.5$ N/m and $\alpha=0.111$ kg/m for $D=12.5$ cm. Within the smallest container, and only at low pressure, we observe anomalous behavior: The ball reaches a plateau in which the velocity remains constant before going to zero again at larger times. Clearly, the model fails to describe the data in this case.

force experienced by the ball during its motion through the bed. To monitor the trajectory of the ball, a wire with a tracer is attached to the ball. Using a high-speed camera (1500

frames per second) and image analysis, we obtain the trajectory of the tracer and therefore the trajectory of the ball $z(t)$. To keep the wire tense an extra friction device and a light counterweight are used, which have the effect that the ball experiences a downward acceleration due to gravity which is approximately 10% smaller than g . The actual acceleration is measured during the “free fall” part of the trajectory, and the results presented here have been corrected for this effect.

In the top two plots of Fig. 7, we compare the trajectories of the ball at ambient pressure for an impact with $Fr=25$ and for two diameters of the confining cylinder ($D=6.0$ and 10.0 cm). We can fit the experimental trajectories using the model introduced in Sec. II [Eq. (1)] using α and κ as fitting parameters. The agreement between the model and the experiments is very good (see Fig. 7).

Decreasing the diameter of the container surprisingly increases both the final depth of the ball, z_f and the time to reach the final depth, t_s . In Fig. 8(a), we report the final depth z_f as a function of the container diameter at different pressures for $Fr=25$. There is a clear dependence: The final position of the ball is deeper for a smaller container. Also, the influence of the boundaries for this Froude number is less pronounced at small pressures. We conclude that for $Fr=25$ the drag force the ball experiences becomes smaller for small containers.

But what happens at higher Froude numbers? In Fig. 8(b), we report the final depth, z_f as a function of the container diameter for $Fr=75$. At first glance the behavior now seems completely opposite to what we observe at small Froude number, as the final depth now decreases with decreasing container diameter: To be more precise, at atmospheric pres-

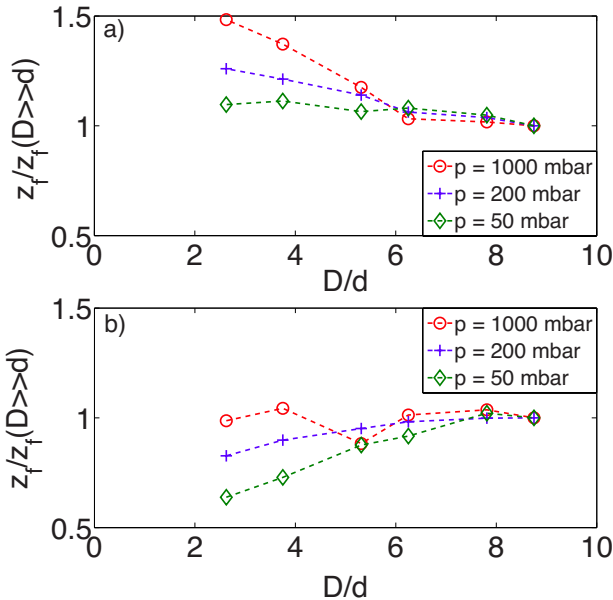


FIG. 8. (Color online) Final depth z_f as a function of the container diameter D , at different pressures, for (a) $Fr=25$ and (b) $Fr=75$. The final depth is divided by the final depth for the unconfined case in order to emphasize the deviations due to the proximity of the boundaries. The dashed lines are a guide to the eye to separate the different pressures.

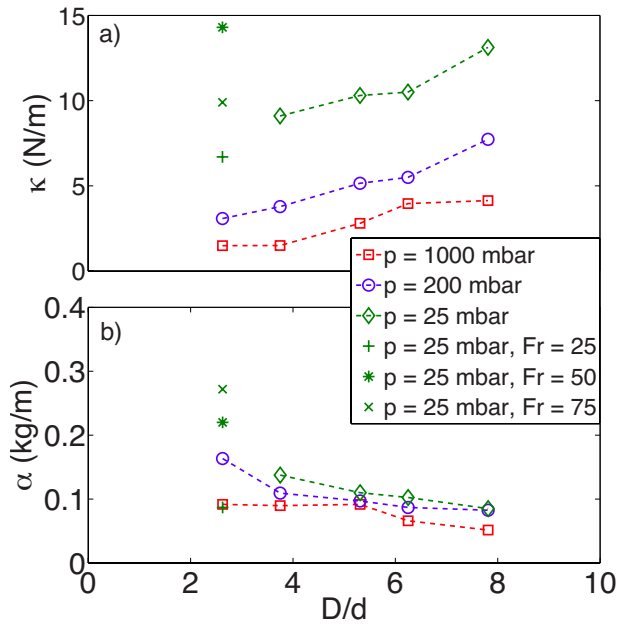


FIG. 9. (Color online) (a) κ and (b) α as a function of cylinder diameter D for different pressures p . For almost all values of D and p variations of both κ and α are within the measurement error and each point is obtained from an average over a range of Froude numbers from 25 to 100. Only for the smallest container ($D/d = 2.6$) and the lowest pressure (50 mbar), there is a strong dependence of κ and α on the Froude number; the model is not valid in this situation. Plot b) reveals that for large Fr the quadratic drag takes over for small cylinder diameters leading to less intrusion of the ball [Fig. 8(b)].

sure the final depth stays more or less constant and at lower pressures there is a decrease in z_f with decreasing container diameter. So now the drag force seems to be larger for small container diameters.

To understand this difference, we have to separately look at the behavior of the hydrostatic and quadratic drag force: After all, for small Froude numbers we expect that the hydrostatic drag $-\kappa z$ will dominate the behavior of the ball, whereas for higher impact velocities it is expected that the quadratic drag αv^2 will start to become increasingly more important during the motion of the ball. To this end, in Fig. 9 we plot κ and α as a function of container diameter for three different pressures. Each value represents the average parameters obtained from fits to the trajectory data analogous to the ones of Fig. 7 over a range of Froude numbers from 25 to 100 [24]. As shown by Caballero [7], the hydrostatic force depends on the ambient air pressure: κ decreases with p roughly as $p^{-1/2}$. Our findings are consistent with this observation, also for smaller container diameters (not shown). Next to this we find that κ increases quite steeply with D , which is consistent with the lower drag experienced by the impacting ball at smaller container diameters at low Froude numbers. Physically, the behavior of the hydrostatic drag force can be understood using a similar argument as [7]: When the ball passes through the sand, an air flow is created around it which fluidizes the sand bed and reduces the drag force. This effect is expected not only to be more important at higher pressure but also when the container diameter be-

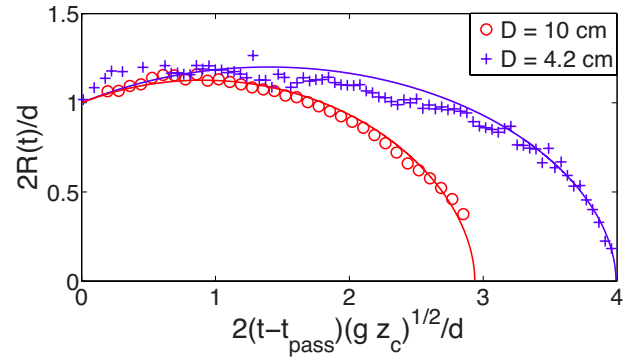


FIG. 10. (Color online) Dynamics of the cavity collapse at closure depth for two container diameters $D=4.2$ cm (\square) and $D=10$ cm (\circ). Here, $Fr=70$ and $p=1$ bar. The time has been rescaled by multiplying with a factor $2\sqrt{gz_c}/d$ in order to show the results in a single plot. The continuous line correspond to a fit using the 2D Rayleigh-Plesset equation [Eq. (2)].

comes smaller: Near the wall, the velocity of the interstitial air is required to be zero and, since the same amount of air needs to be displaced, the flow will be more important if the aspect ratio D/d is small. Consequently, the hydrostatic drag force will be lower.

Figure 9(b) contains the coefficient α of the quadratic drag term αv^2 . Clearly, α becomes larger for smaller container diameters but the difference is hardly as pronounced as was the case for κ . This accounts for the observation that at some point, for larger Froude number, the drag does become larger when the container diameter is decreased.

Finally, in Figs. 9(a) and 9(b) there is one exceptional value: For the smallest container diameter ($D/d=2.6$) and the lowest pressure (50 mbar) the fitted values of κ and α turn out to strongly depend on the Froude number. The bottom two plots in Fig. 7, which contain two trajectories at 50 mbar for the largest and the smallest container diameter, reveal the reason why: Whereas for the biggest container ($D=12.5$ cm), the behavior is similar to the behavior described for $Fr=25$, for the smallest one ($D=4.2$ cm) it is qualitatively different. While the agreement between the experimental and the computed trajectory still seems to be reasonable [Fig. 7(c)], the velocity of the ball [Fig. 7(d)] presents large discrepancies: The measured ball velocity doesn't decrease to zero gradually, but first slows down until it reaches a plateau at constant velocity where it stays for a while before slowing down until it stops. This behavior is identical to the one observed in the x-ray experiments of Royer *et al.* [6], in which the container needed to be kept small. The fact that the velocity plateau is only present for small container diameters, clearly indicates that it is a boundary effect.

We believe that the origin of the plateau lies in an additional force acting on the sphere that originates from the side walls and is mediated by the sand grains [25]. In order to produce a constant velocity during some time interval, this force must be depth independent, dominant over the hydrostatic drag force, and must, together with the quadratic drag force, balance gravity at the plateau velocity. The constant velocity regime ends when, at a certain depth, the Coulomb drag force takes over again, slowing the ball down to zero.

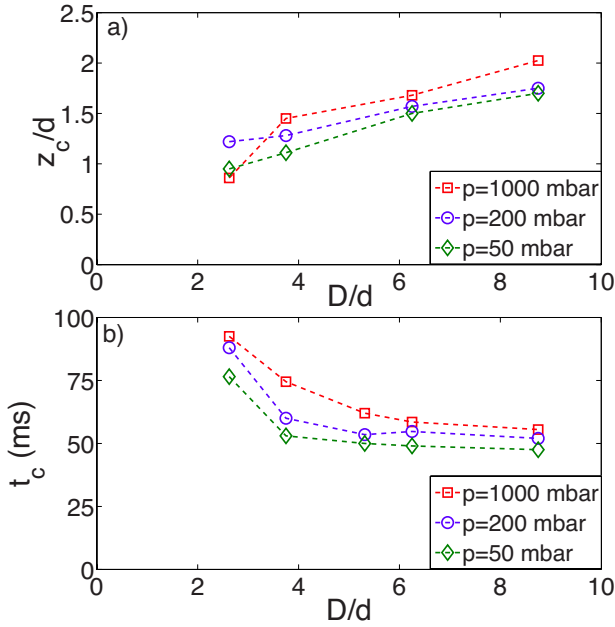


FIG. 11. (Color online) (a) Closure depth z_c as a function of the container diameter D for different pressures. (b) Closure time t_c as a function of the container diameter D for different pressures. For all measurements $Fr=70$.

The verification of this assertion goes beyond the technical possibilities of our setup and asks for further study.

B. Collapse of the cavity

The second issue that we want to address in this Section is the influence of the container diameter on the collapse of the cavity. We study the dynamics of the collapse of the cavity at closure depth using the profilometric method described in detail in Sec. III. In Fig. 10, the radius of the cavity is plotted as a function of time $t-t_{pass}$ for two different diameters at atmospheric pressure where t_{pass} is the time needed for the ball to reach the closure depth z_c . We can clearly distinguish a slight expansion of the cavity followed by a strong contraction. The collapse accelerates towards the pinch-off. Due to experimental limitations we do not have enough spatial resolution to obtain data points close to the pinch-off. The void dynamics is in qualitative agreement with the behavior predicted by the 2D Rayleigh-Plesset equation described in Sec. II [Eq. (2)]. Whereas the expansion turns out to be weak and more or less independent of the container diameter, the contraction and the closure strongly depend on it. A plausible explanation would be that, for small containers, less sand is involved in the collapse. Therefore, the hydrostatic pressure which drives the collapse is not as sustained as for a larger container, explaining why the collapse takes longer for a smaller container (Fig. 10).

In Fig. 11 we plot the closure depth z_c and the closure time t_c . We find that t_c increases and z_c decreases when decreasing the container diameter. This decrease of the closure depth is generic: Also for small Fr , where z_f actually increases, we find a decrease of z_c . The fact that a decrease of the closure depth z_c implies an increase of the collapse time

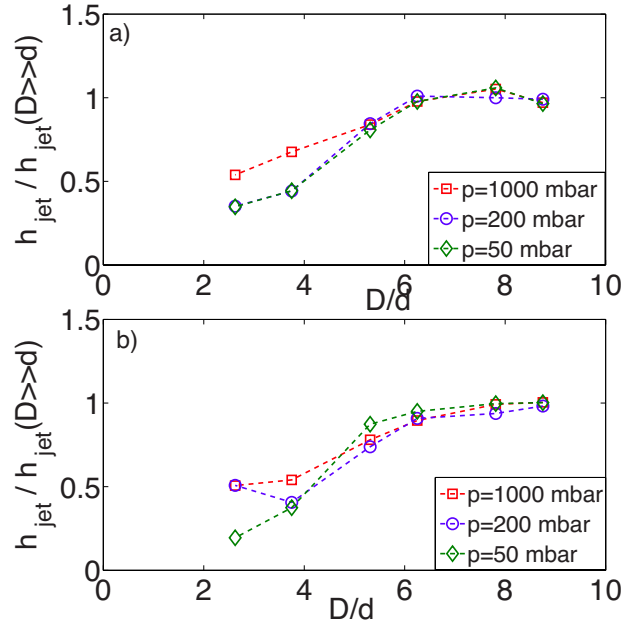


FIG. 12. (Color online) The jet height, h_{jet} as a function of the container diameter D for $Fr=25$ (a) and $Fr=50$ (b) at different ambient pressures. The jet height is divided by the jet height in the unconfined case in order to see the deviations due to the proximity of the boundaries. For all pressures and Froude numbers the jet height increases with increasing container diameter. The dashed lines are a guide to the eye to separate the measurement series at different pressures.

t_{coll} can be understood from a reduction of the driving pressure ($\propto gz_c$) and the availability of less sand for smaller container diameters (as explained above).

C. Jet height

Now that we studied how the process of the formation and subsequent collapse of the cavity are influenced by the proximity of the side walls, we continue with the influence of the diameter of the container D on the jet and, in particular, on the maximum height reached by the jet. In Fig. 12, the jet

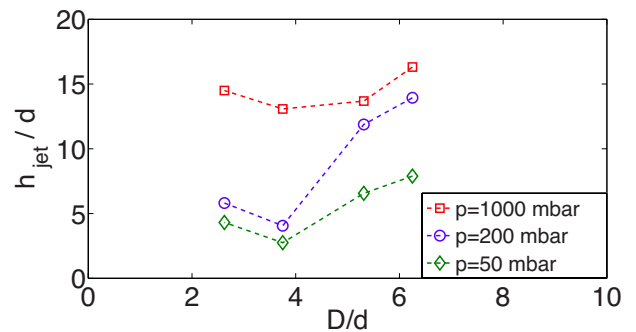


FIG. 13. (Color online) The jet height h_{jet} as a function of the container diameter D for $Fr=100$ and different ambient pressures. Again, there is a clear change in jet height as function of container diameter. Measurements at the highest Froude numbers are not possible due to the surface seal (see text). The dashed lines are a guide to the eye to separate the measurement series at different pressures.

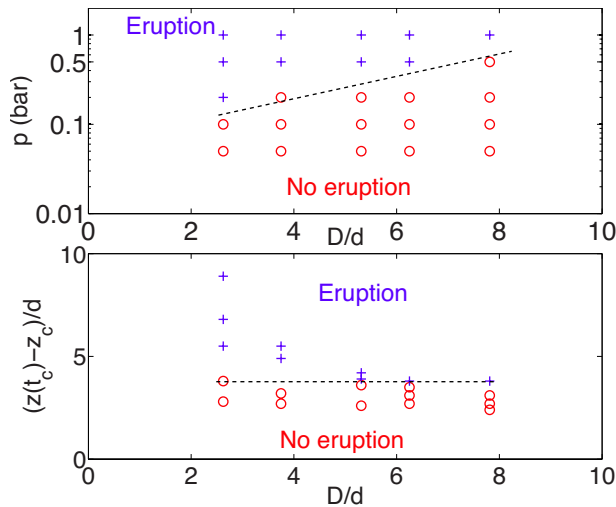


FIG. 14. (Color online) (a) Phase diagram for the granular eruption at $Fr=100$ as a function of the pressure p and the container diameter D . In both plots red open circles indicate parameter values where an eruption was absent, whereas blue plus signs stand for parameter values with an eruption. (b) The same phase diagram, now as a function of the volume of the entrapped air bubble $[(z(t_c) - z_c)/d]$ and the container diameter D . The latter plot clearly indicates that the presence of the eruption is a function of the entrapped air bubble size only [26].

height h_{jet} is plotted as a function of the diameter for two Froude numbers ($Fr=25$ and $Fr=50$) at different values of the ambient pressure. Since it was already discussed extensively in [7] that the jet becomes smaller at reduced ambient pressure, we now divide h_{jet} by the jet height in the unconfined situation. We observe that, while decreasing the container diameter, the jet reaches less high. This behavior is the combined result of the reduction of the closure depth and the increase of the closure time with decreasing container diameter as was described in the previous subsection: The reduction of z_c reduces the hydrostatic pressure that drives the collapse and the increase of the closure time is connected to the fact that—because of the reduced container diameter—there is less sand available during the collapse, making the driving pressure less sustained. Both factors contribute to a decrease of the jet height. The rescaling by the unconfined jet height also reveals that the influence of the boundaries is similar for all pressures and even for these two different Froude numbers. The unconfined behavior is obtained when the diameter of the container is seven times higher than the diameter of the ball.

At high Froude number ($Fr=100$), the results can only be obtained for small containers, because, when the diameter is large, the jet collides with the splash which is being sucked into the cavity behind the ball at high ambient pressures. This is similar to the surface seal that has been observed for impacts on a liquid [20,21]. For this high Froude number the results are less conclusive, as can be seen in Fig. 13. This is possibly due to the increased importance of the air flow caused by the ball when it is restricted to a smaller container diameter at these high impact velocities.

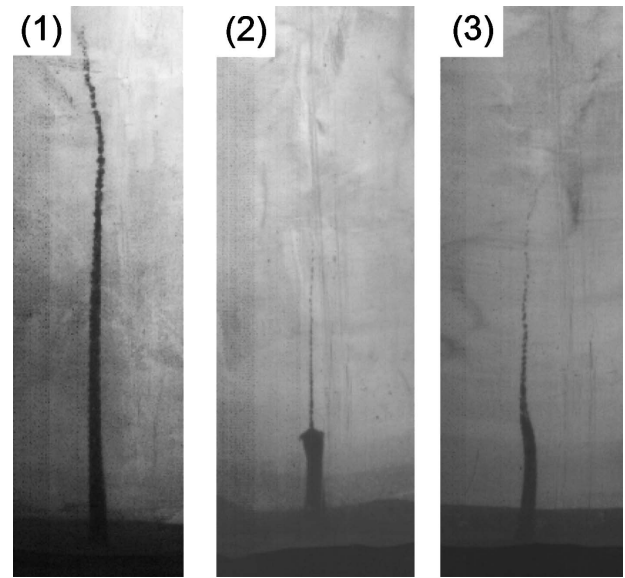


FIG. 15. Typical snapshots of the three distinct jet shapes observed in experiment: (1) Normal jet (for $D=10$ cm, $Fr=100$, and $p=1000$ mbar); (2) Thick-thin structure with sharp shoulder (for $D=8.5$ cm, $Fr=100$, and $p=100$ mbar); (3) Thick-thin structure with a transition (for $D=10$ cm, $Fr=50$, and $p=50$ mbar). All snapshots show the fully developed shape of the jet at its maximum height. The snapshots are not on the same scale.

D. Granular eruption

Finally, we turn to the granular eruption that terminates the series of events. Since the container diameter has an influence on both the final depth and the closure depth, it is expected that the granular eruption will depend on the container diameter D . In Fig. 14(a) we report, for $Fr=100$, the phase diagram indicating the presence of an eruption in (p, D) space. There is a marked dependence on the container

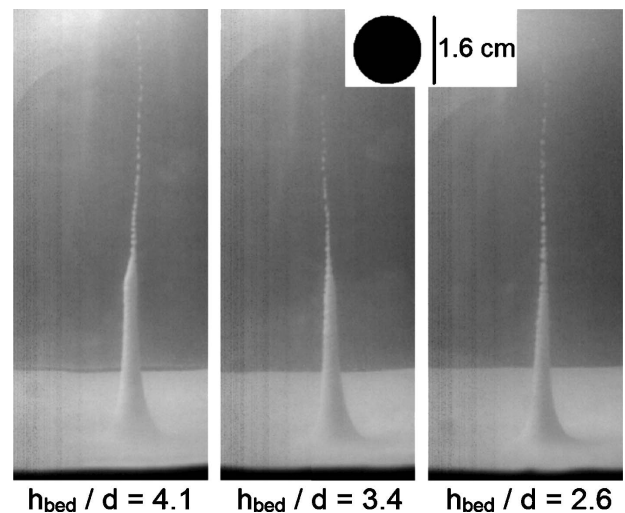


FIG. 16. Three snapshots of the shape of the jet at different values of the height h_{bed} of the sand bed, taken 120 ms after the ball impact for $p=100$ mbar and $Fr=70$. For $h_{bed}=4.1d$ there is a clear thick-thin structure (with a transition region), which gradually disappears when the bed height is decreased to $3.4d$ and $2.6d$.

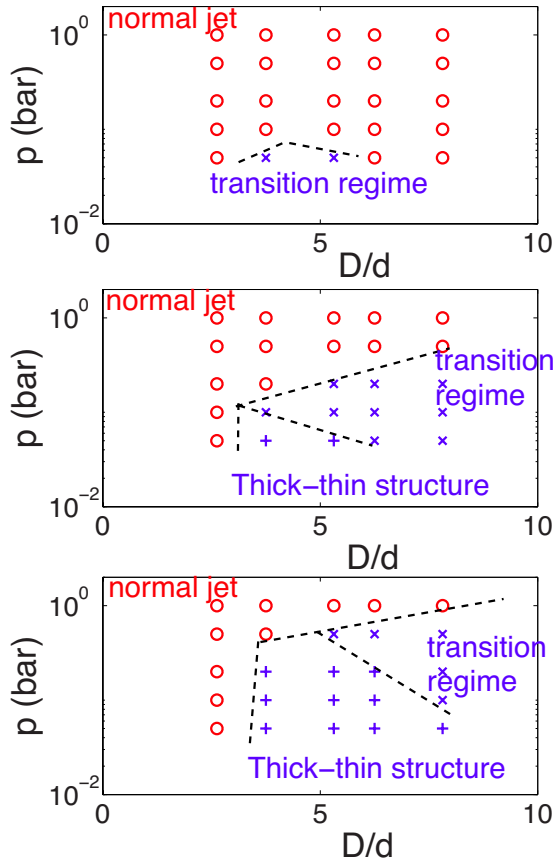


FIG. 17. (Color online) Phase diagram of the observed jet shapes as a function of the ambient pressure p and the container diameter D for three different Froude numbers: (a) $Fr=25$; (b) $Fr=50$; and (c) $Fr=100$. The dashed lines are a guide to the eye to separate the different regions in the phase diagrams.

diameter D : More eruptions are observed in a small container than in a large container.

This behavior can be explained using the influence of the side walls on the trajectory of the ball and on the collapse time together with the closure depth: For the same pressure, the closure time is larger, which leads to a deeper position of the ball at closure $z(t_c)$, and at the same time the closure depth is smaller, increasing the size of the entrapped air bubble for small container diameters. If we replace the pressure in Fig. 14(a) by the quantity $[z(t_c) - z_c]/d$ which is proportional to the volume of the entrapped air bubble [remember that it was argued that $V_{\text{bubble}} \sim d^2[z(t_c) - z_c]$, see Eq. (7), which is subsequently divided by d^3], we remove the dependence on D : In Fig. 14(b) the phase diagram is separated into two parts using a horizontal line representing a critical volume $V^* \sim 3.8d^3$. This means that, independently of the diameter of the container, the bubble volume upon its formation has to be big enough to lead to an eruption. As was explained in Sec. IV this is because the air bubble must have sufficient time to reach the surface before it has completely dissolved into the sand bed. Incidentally, the value for the critical volume determined from the phase diagram corresponds well to the value found in Sec. IV.

VI. JET SHAPE AND THICK-THIN STRUCTURE

The proximity of the side walls and the bottom does not only affect the height of the jet but also its shape. One of the most prominent features is the thick-thin structure first described by Royer *et al.* [4,6] who studied the dependence of this structure on ambient pressure and Froude number. In the same work Royer *et al.* proposed a formation mechanism for the thick part of the jet based on the pressurized air bubble pushing sand into the thin jet originating from the pinch-off at the closure depth.

In this section we report, in addition to the Froude and pressure dependence, a pronounced dependence of the thick-thin structure on the proximity of the container boundaries. We propose an alternative model for the formation of the structure which semiquantitatively accounts for the observed behavior of the phenomenon for the entire parameter space.

A. Observations

In our experiments we can distinguish three different jet shapes, two of which exhibit a thick-thin structure:

- (1) a “normal” jet, in which the width of the jet gradually decreases from bottom to top;
- (2) a thick-thin structure with a sharp shoulder, where the thick lower part abruptly changes into a thin upper part;
- (3) a thick-thin structure with a transition, characterized by a transient region in which the thick lower part gradually passes into the thin upper part.

An example of each of the three jet shapes is shown in Fig. 15.

First, we briefly look at the influence of the bed depth on these structures for a moderate Froude number ($Fr=70$). At atmospheric pressure we observe a normal jet for all values of the bed depth h_{bed} (Fig. 4). To observe a thick-thin structure we need to go to lower ambient pressures: At 100 mbar, a thick-thin structure with sharp shoulders can be observed in the unconfined case, i.e., for large h_{bed} (Fig. 15). Below a certain threshold ($h_{\text{bed}} \leq 4d$), the thick-thin structure gradually disappears (Fig. 16). This disappearance coincides with the disappearance of the entrapped air bubble below $3d$ in which case the collapse happens more or less on top of the ball.

The effect of the proximity of the side walls (within a sufficiently deep bed) is reported in the three phase diagrams of Fig. 17, where the jet shapes are classified as a function of container diameter and pressure, for three different Froude numbers. For the lowest Froude number ($Fr=25$), a thick-thin structure with a transition is found only for the smallest pressure at intermediate container diameter. Thick-thin structures with a sharp shoulder are not found for this Froude number. When we increase the Froude number, the thick-thin-structure region is found to grow. Within the region containing the transition variety of the thick-thin structure we observe the formation and growth of a region containing the sharp-shoulder variety. Although the thick-thin-structure region grows to include the largest container diameters that we have used in our experiment [27], thick-thin structures are never found in the smallest container diameter for the parameter space explored in this study.

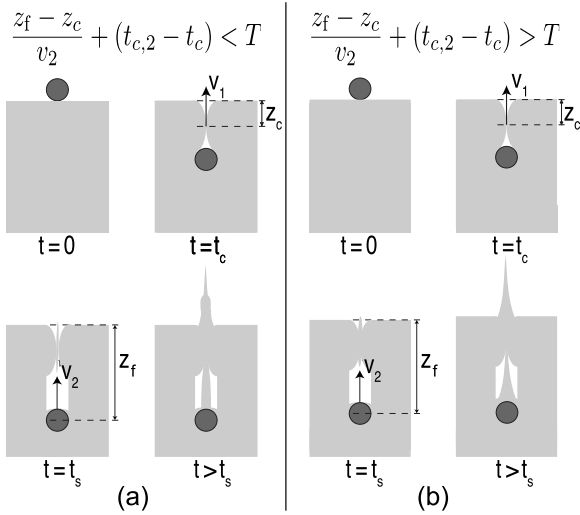


FIG. 18. Schematic drawing of the proposed mechanism leading to the thick-thin structure. In case (a), the second collapse happens before a certain threshold time, such that the thickness of the layer of sand from the first collapse still is thin enough to be pushed up by the second jet and a thick-thin structure emerges. In case (b) we are above the threshold: The second jet collides with a thick layer of sand and is unable to disturb the formation of the first jet.

Remarkably, in our experiments a granular eruption (almost) never coincides with a thick-thin structure [one can, e.g., compare Figs. 14(a) and 17(c)]. Combined with the fact that a granular eruption only takes place for large entrapped air bubbles (as explained in Sec. V D), this implies that thick-thin structures are only formed for smaller entrained air bubbles. This in turn seems to be in contradiction with a mechanism in which the pressurized air bubble pushes up bed material that forms the thick part of the jet [6], since such a mechanism is likely to be stronger for a larger entrapped air bubble. In addition, for varying container diameter, we observe both thick-thin structures and normal jets for the same amount of entrapped air.

We will therefore in the next subsections propose an alternative mechanism for the formation of the thick-thin structures. At this point it should be stressed that there is no direct experimental evidence for the proposed mechanism as this would require the ability of imaging the events inside the sand, which until now is possible only in a small setup [6]. This issue needs to be settled in future research.

B. Hypothesis

We propose an alternative model for the formation of the thick-thin structures based on the hypothesis that there is a second collapse that takes place on top of the ball forming a second jet. Such a second collapse can be motivated from experiments in a quasi-two-dimensional setup [18] and from x-ray measurements [4,6], where multiple collapses have also been observed. The idea is as follows: Since the ball is still moving when the first collapse occurs (Sec. V A), the second collapse happens at a later point in time and therefore the first jet is already well on its way in the formation process when the second one is being formed. We now speculate

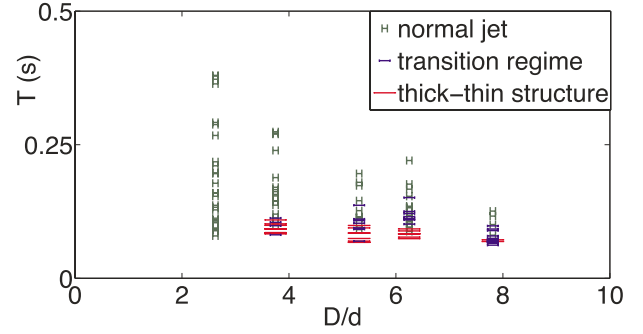


FIG. 19. (Color online) Phase diagram with on the vertical axis the left hand side of Eq. (9) and on the horizontal axis the container diameter D . The plot contains all measurements from Fig. 17. Short, green dashes indicate normal jets, intermediate, blue dashes the thick-thin structure with a transition, and long, red dashes thick-thin structures with a shoulder.

that, if the second jet can catch up with the first fast enough, it will hit its base and produce a thick-thin structure. When the time span between the two jets is too long however, the first jet will have (almost) fully formed and the collision of the second jet with its base will not disturb its shape [28] and hence not create a thick-thin structure.

In order to test the above hypothesis, we need to estimate from our experimental data the time interval between the moment that the first jet is formed at the closure depth z_c and the moment that the hypothetical second jet reaches z_c . This will be done in the next subsection. If the hypothesis is correct, we will find that thick-thin structures are only formed below a certain threshold value of this time interval.

This alternative model is not in contradiction with the experimental observation that a granular eruption almost never coincides with a thick-thin structure: If an eruption is observed, this means that a relatively large air bubble must have been entrapped. This concurs with a large distance between the first and the second collapse point, which makes it unlikely that a thick-thin structure will be formed. Conversely, if a thick-thin structure is observed, this means that a (relatively small) air bubble must have been pierced by the second jet, which will facilitate its dissolution in the sand.

The proposed mechanism can at least qualitatively incorporate previous experiments done in [5,6]. They observed that the height of the thick jet decreases when the diameter of the ball or the ambient pressure decreases. Decreasing one of these parameters decreases the final depth of the ball and therefore the position of the second collapse. As the height of the jet depends on the position of the second collapse, a lower depth will result into a less high jet.

C. Estimating the time interval

In order to test our hypothesis, we now proceed with the estimation of the interval between the time that the first jet is formed at the closure depth z_c and the moment that the second jet reaches z_c . This time interval consists of the difference between the two closure times ($t_{c,2} - t_c$) (where $t_{c,2}$ is the closure time of the lower collapse), summed with the time the second jet needs to reach z_c , i.e., $(z_f - z_c)/v_2$ with v_2 the

velocity of the second jet. If this time interval is shorter than some threshold value T , we obtain a thick-thin structure, as visualized in Fig. 18. This leads to

$$\frac{z_f - z_c}{v_2} + (t_{c,2} - t_c) < T. \quad (8)$$

Before continuing our estimate, let us first illustrate the workings of this mechanism in an example: For $Fr=75$ and $p=50$ mbar we start from the largest container size where a thick-thin structure is visible. When decreasing the size of the container, the closure depth z_c and the final depth z_f decrease following approximately the same behavior, such that the distance between the two collapses is more or less constant. Because z_f decreases, the hydrostatic pressure and therefore the velocity of the second jet decrease as well, such that the first term in Eq. (8) increases. The same holds for the second term, because the closure time is found to increase with decreasing container diameter [cf. Fig 11(b)]. Thus, the left-hand side of Eq. (8) increase with decreasing the container diameter, explaining why below a certain diameter the thick-thin structure disappears.

We now approximate the several terms in Eq. (8) with experimentally known quantities. Because there is no direct experimental evidence for the second collapse, this involves some speculation in which we suppose that the model of Sec. II can be extended to describe the second collapse. Doing so, in the first term of Eq. (8) the velocity of the second jet, v_2 , is proportional to the square root of the driving hydrostatic pressure at depth z_f , i.e., $v_2 = C\sqrt{gz_f}$, with C constant. Because, similarly, for the velocity of the first jet we have $v_{jet} = C\sqrt{gz_c}$, we find $v_2 \approx \sqrt{z_f/z_c}v_{jet}$ which is inserted into the first term of Eq. (8). In turn, v_{jet} can be deduced from the jet height h_{jet} as $v_{jet} = \sqrt{2gh_{jet}}$.

In the second term, the unknown quantity is the second closure time $t_{c,2}$ —i.e., of the cavity just above the ball—which consists of the sum of the time t_s the ball needs to come to a standstill and the time $t_{coll,2}$ the cavity needs to collapse at that point. Since according to the Rayleigh model discussed in Sec. II the collapse times should scale as $t_{coll,2} = C'd/(2\sqrt{gz_f})$ and $t_{coll} = C'd/(2\sqrt{gz_c})$, respectively (with C' constant), we have $t_{coll,2} \approx \sqrt{z_c/z_f}t_{coll}$. Inserting all of the above in Eq. (8) we obtain

$$\left[\frac{z_f - z_c}{\sqrt{2gh_{jet}}} + t_{coll} \right] \sqrt{\frac{z_c}{z_f}} + (t_s - t_c) < T. \quad (9)$$

In Fig. 19 we find a phase diagram in which all measurements from Fig. 17 are plotted again, but now with the left hand side of Eq. (9) on the vertical axis. Clearly, all thick-thin structures (intermediate and large dashes) lie below some time-threshold, in agreement with the formation mechanism discussed above. The smallest container diameter forms an exception, in the sense that here thick-thin structures are also not found for time scales where they could have been expected (i.e., that lie clearly below the threshold T). This behavior may be due to the fact that lack of material to sustain the collapse leads to an underestimation of the actual times in Eq. (9). But in general the estimate seems to work fairly well.

VII. CONCLUSIONS

In conclusion, we have studied the influence of the boundaries on the various phenomena that can be observed after impact of a ball on a loosely packed sand bed: The penetration of the ball into the bed, the formation of a void, its collapse and the creation of a granular jet, the shape of the granular jet, and the presence of a granular eruption. We have shown that the observed behavior of the ball inside the sand bed and the formation and collapse of the cavity created by the ball is generally well captured by the drag law and hydrostatic collapse model of Sec. II.

In more detail, we have shown in the first part of this study that the proximity of the bottom changes these phenomena, starting with the obvious modification of the final position of the ball, which below a certain depth just hits the bottom. The height of the jet is affected, when the void closure is constrained to happen on top of the ball. A granular eruption at the surface only happens if the volume of the entrapped air bubble is large enough, and can be fully suppressed by decreasing the height of the sand bed.

In the second part we have investigated the influence of nearby side walls. Here we find a strong influence on the drag force that the sand bed exerts on the ball when it moves through the sand bed: We find that the hydrostatic drag force component becomes less important, whereas the quadratic (velocity-dependent) component becomes more important. The latter can be traced back to the increased importance of the air flow in the container due to the confinement. Apart from the question why and how the coefficients depend on ambient pressure and container diameter, the drag model of Sec. II provides a quite accurate description of the observations for most of the parameter space. Only the results for the smallest container at low ambient pressure cannot be explained using this framework, due to the constant velocity plateau that is observed during the motion.

The formation and subsequent collapse of the cavity is not only influenced by the modification of the trajectory of the ball; also a smaller amount of sand is involved in its collapse which therefore takes longer for decreased container size. Apart from this, the simple hydrostatic collapse model of a cylindrical cavity presented in Sec. II accounts well for most of the observations. In this way, the modification of the closure time, and closure depth observed in our experiments, can be understood.

As a result of both the changes in the ball's trajectory and the smaller amount of sand that is involved in the collapse, the jet height is affected by the proximity of the wall. In the parameter range of our experiments the unconfined behavior is retrieved when the diameter of the container is larger than $7d$; this value however does seem to depend on the Froude number, and is larger when the Froude number is larger. The occurrence of a granular eruption was shown to be correlated with the size of the air bubble entrapped inside the sand bed.

Finally, this paper culminates in the proposal of a new mechanism for the formation of the thick-thin structure, based upon a second collapse that occurs on top of the ball when it has come to a standstill. To obtain a thick part in the

jet, the second jet coming from this secondary collapse needs to be formed fast enough to penetrate the rapidly growing layer of sand that is being created around the point where the first jet had originated.

ACKNOWLEDGMENTS

The work is part of the research program of FOM, which is financially supported by NWO; S.v.K. and S.J. acknowledge financial support.

- [1] H. M. Jaeger, S. R. Nagel, and R. P. Behringer, *Rev. Mod. Phys.* **68**, 1259 (1996).
- [2] S. T. Thoroddsen and A. Q. Shen, *Phys. Fluids* **13**, 4 (2001).
- [3] D. Lohse, R. Bergmann, R. Mikkelsen, C. Zeilstra, D. van der Meer, M. Versluis, K. van der Weele, M. van der Hoef, and H. Kuipers, *Phys. Rev. Lett.* **93**, 198003 (2004).
- [4] J. R. Royer, E. I. Corwin, A. Fiori, M.-L. Cordero, M. L. Rivers, P. J. Eng, and H. M. Jaeger, *Nat. Phys.* **1**, 164 (2005).
- [5] J. R. Royer, E. I. Corwin, P. J. Eng, and H. M. Jaeger, *Phys. Rev. Lett.* **99**, 038003 (2007).
- [6] J. R. Royer, E. I. Corwin, B. Conyers, A. Fiori, M. L. Rivers, P. J. Eng, and H. M. Jaeger, *Phys. Rev. E* **78**, 011305 (2008).
- [7] G. Caballero, R. Bergmann, D. van der Meer, A. Prosperetti, and D. Lohse, *Phys. Rev. Lett.* **99**, 018001 (2007).
- [8] J. O. Marston, J. P. K. Seville, Y.-V. Cheun, A. Ingram, S. P. Decent, and M. J. H. Simmons, *Phys. Fluids* **20**, 023301 (2008).
- [9] J. S. Uehara, M. A. Ambroso, R. P. Ojha, and D. J. Durian, *Phys. Rev. Lett.* **90**, 194301 (2003).
- [10] M. Pica Ciamarra, A. H. Lara, A. T. Lee, D. I. Goldman, I. Vishik, and H. L. Swinney, *Phys. Rev. Lett.* **92**, 194301 (2004).
- [11] D. Lohse, D. Rauhé, R. P. H. M. Bergmann, and D. van der Meer, *Nature (London)* **432**, 689 (2004).
- [12] J. R. de Bruyn and A. Walsh, *Can. J. Phys.* **82**, 439 (2004).
- [13] M. Hou, Z. Peng, R. Liu, K. Lu, and C. K. Chan, *Phys. Rev. E* **72**, 062301 (2005).
- [14] L. S. Tsimring and D. Volfson, in *Powders and Grains 2005*, edited by R. Garcia-Rojo, H. J. Herrmann, and S. McNamara (Taylor & Francis, London, 2005), pp. 1215–1223.
- [15] H. Katsuragi and D. J. Durian, *Nat. Phys.* **3**, 420 (2007).
- [16] E. L. Nelson, H. Katsuragi, P. Mayor, and D. J. Durian, *Phys. Rev. Lett.* **101**, 068001 (2008).
- [17] A. Seguin, Y. Bertho, and P. Gondret, *Phys. Rev. E* **78**, 010301(R) (2008).
- [18] R. Mikkelsen, M. Versluis, G. W. Bruggert, E. G. C. Koene, D. van der Meer, K. van der Weele, and D. Lohse, *Phys. Fluids* **14**, S14 (2002).
- [19] S. J. de Vet and J. R. de Bruyn, *Phys. Rev. E* **76**, 041306 (2007).
- [20] D. Gilbarg and R. A. Anderson, *J. Appl. Phys.* **19**, 127 (1948).
- [21] R. P. H. M. Bergmann, D. van der Meer, S. Gekle, A. van der Bos, and D. Lohse, *J. Fluid Mech.* **633**, 381 (2009).
- [22] Note that the quadratic drag is called “inertial drag” and $\alpha \equiv m/d_0$ where m is the mass of the sphere and d_0 is the constant introduced in [15].
- [23] Starting from the collapse time t_c , the rise time of the bubble has been estimated as that of similarly sized bubble in a liquid experiencing Stokes drag, assuming that it rises in a straight path with its terminal velocity immediately, i.e., from the balance $\phi \rho_g V_{\text{bubble}} g \propto \eta V_{\text{bubble}}^{1/3} v_{\text{rise}}$ (with the packing fraction ϕ and the dynamic viscosity η assumed to be constant) we have $v_{\text{rise}} \propto V_{\text{bubble}}^{2/3} g$ with $V_{\text{bubble}} \propto [z(t_c) - z_c] d^2$. Now, we estimate the initial position of the top of the bubble as $z_f - [z(t_c) - z_c]$. This leads to $t_1 = [z_f + z_c - z(t_c)] / v_{\text{rise}} \propto [z_f + z_c - z(t_c)] \times [z(t_c) - z_c]^{-2/3} d^{-4/3} g^{-1}$. The proportionality constant was fitted to give the correct large depth behavior. Regarding the dissolution time up to $h_{\text{bed}} \approx 11d$ we can estimate the pressure difference by the hydrostatic pressure in the center of the bubble at the moment the ball has stopped, i.e., $\Delta P \approx \phi \rho_g g \{z_f - [z(t_c) - z_c]/2\}$ (where $z(t_c)$ equals $h_{\text{bed}} - d$ for $h_{\text{bed}} \leq 5.5d$), the volume of entrapped air again as $V_{\text{bubble}} \propto [z(t_c) - z_c] d^2$, and, since the ball reaches the bottom, the shortest path is around the ball through the sintered plate, i.e., $H \approx d$. Using Darcy’s law we have $t_2 \approx V_{\text{bubble}} / Q \propto V_{\text{bubble}} H / \Delta P$. Inserting the above quantities we obtain $t_2 \propto [z(t_c) - z_c] d^3 / (\phi \rho_g g \{z_f - [z(t_c) - z_c]/2\})$. Above $h_{\text{bed}} = 11d$ only the path length changes to $H \propto h_{\text{bed}} - z_f$ such that $t_2 \propto [z(t_c) - z_c] (h_{\text{bed}} - z_f) d^2 / (\phi \rho_g g \{z_f - [z(t_c) - z_c]/2\})$. Again, the proportionality constant was used as a fitting parameter.
- [24] The (small) differences in the fitting parameters κ and α found for the various Froude numbers were consistent with the measurement error, except for the smallest container diameter at the smallest pressure, as explained in the text.
- [25] In our view, as the ball penetrates into the bed it pushes sand against the side walls such that a jammed region (or force network) is formed between the sphere and the walls that mediates this force.
- [26] To obtain Fig. 14 the closure depths z_c for the diameter of $D = 8.5$ cm (which were not measured directly) are obtained by interpolation from Fig. 11(a).
- [27] Note that the largest container size (the one without an inserted cylinder) has not been included because of its square cross section, which is found to have a marked influence on the jet shape.
- [28] At this point it is good to note that such a mechanism explains why the occurrence of a thick-thin structure never seems to interfere with the jet height: The height is determined by the free flight of the thin part which is being formed at the first closure z_c , i.e., before the formation of the thick part can become of influence.