



A LETTERS JOURNAL EXPLORING
THE FRONTIERS OF PHYSICS

OFFPRINT

Energy cascade in internal-wave attractors

C. BROUZET, E. V. ERMANYUK, S. JOUBAUD, I. SIBGATULLIN and
T. DAUXOIS

EPL, **113** (2016) 44001

Please visit the website
www.epljournal.org

Note that the author(s) has the following rights:

- immediately after publication, to use all or part of the article without revision or modification, **including the EPLA-formatted version**, for personal compilations and use only;
- no sooner than 12 months from the date of first publication, to include the accepted manuscript (all or part), **but not the EPLA-formatted version**, on institute repositories or third-party websites provided a link to the online EPL abstract or EPL homepage is included.

For complete copyright details see: <https://authors.eplletters.net/documents/copyright.pdf>.



epl

A LETTERS JOURNAL EXPLORING
THE FRONTIERS OF PHYSICS

AN INVITATION TO SUBMIT YOUR WORK

www.epljournal.org

The Editorial Board invites you to submit your letters to EPL

EPL is a leading international journal publishing original, innovative Letters in all areas of physics, ranging from condensed matter topics and interdisciplinary research to astrophysics, geophysics, plasma and fusion sciences, including those with application potential.

The high profile of the journal combined with the excellent scientific quality of the articles ensures that EPL is an essential resource for its worldwide audience. EPL offers authors global visibility and a great opportunity to share their work with others across the whole of the physics community.

Run by active scientists, for scientists

EPL is reviewed by scientists for scientists, to serve and support the international scientific community. The Editorial Board is a team of active research scientists with an expert understanding of the needs of both authors and researchers.



www.epljournal.org

OVER
560,000
full text downloads in 2013

24 DAYS
average accept to online
publication in 2013

10,755
citations in 2013

*"We greatly appreciate
the efficient, professional
and rapid processing of
our paper by your team."*

Cong Lin
Shanghai University

Six good reasons to publish with EPL

We want to work with you to gain recognition for your research through worldwide visibility and high citations. As an EPL author, you will benefit from:

- 1 Quality** – The 50+ Co-editors, who are experts in their field, oversee the entire peer-review process, from selection of the referees to making all final acceptance decisions.
- 2 Convenience** – Easy to access compilations of recent articles in specific narrow fields available on the website.
- 3 Speed of processing** – We aim to provide you with a quick and efficient service; the median time from submission to online publication is under 100 days.
- 4 High visibility** – Strong promotion and visibility through material available at over 300 events annually, distributed via e-mail, and targeted mailshot newsletters.
- 5 International reach** – Over 2600 institutions have access to EPL, enabling your work to be read by your peers in 90 countries.
- 6 Open access** – Articles are offered open access for a one-off author payment; green open access on all others with a 12-month embargo.

Details on preparing, submitting and tracking the progress of your manuscript from submission to acceptance are available on the EPL submission website www.epletters.net.

If you would like further information about our author service or EPL in general, please visit www.epljournal.org or e-mail us at info@epljournal.org.

EPL is published in partnership with:



European Physical Society



Società Italiana
di Fisica

Società Italiana di Fisica



EDP Sciences



IOP Publishing

Energy cascade in internal-wave attractors

C. BROUZET¹, E. V. ERMANYUK^{1,2}, S. JOUBAUD¹, I. SIBGATULLIN^{1,3} and T. DAUXOIS¹

¹ *Univ Lyon, ENS de Lyon, Univ Claude Bernard, CNRS, Laboratoire de Physique - F-69342 Lyon, France*

² *Lavrentyev Institute of Hydrodynamics - Novosibirsk, Russia*

³ *Institute of Mechanics and Department of Mechanics and Mathematics, Moscow State University and Shirshov Institute of Oceanology - Moscow, Russia*

received 25 November 2015; accepted in final form 19 February 2016

published online 4 March 2016

PACS 47.35.Bb – Gravity waves

PACS 47.55.Hd – Stratified flows

PACS 92.05.Bc – Analytical modeling and laboratory experiments

Abstract – One of the pivotal questions in the dynamics of the oceans is related to the cascade of mechanical energy in the abyss and its contribution to mixing. Here, we propose internal-wave attractors in the large-amplitude regime as a unique self-consistent experimental and numerical setup that models a cascade of triadic interactions transferring energy from large-scale monochromatic input to multi-scale internal-wave motion. We also provide signatures of a discrete wave turbulence framework for internal waves. Finally, we show how, beyond this regime, we have a clear transition to a regime of small-scale high-vorticity events which induce mixing.

Copyright © EPLA, 2016

Introduction. – The continuous energy input to the ocean interior comes from the interaction of global tides with the bottom topography [1]. The subsequent mechanical energy cascade to small-scale internal-wave motion and mixing is a subject of active debate [2] in view of the important role played by abyssal mixing in existing models of ocean dynamics [3–5]. A question remains: how does energy injected through internal waves at large vertical scales [6] induce the mixing of the fluid [2]?

In a stratified fluid with an initially constant buoyancy frequency $N = [(-g/\bar{\rho})(d\rho/dz)]^{1/2}$, where $\rho(z)$ is the density distribution ($\bar{\rho}$ a reference value) over vertical coordinate z , and g the gravity acceleration, the dispersion relation of internal waves is $\theta = \pm \arcsin(\Omega)$, where θ is the angle between the wave beams and the horizontal, while Ω is the frequency of oscillations non-dimensionalized by N . The dispersion relation requires preservation of the slope of the internal-wave beam upon reflection at a rigid boundary. In the case of a sloping boundary, this property gives a purely geometric reason for a strong variation of the width of internal-wave beams (focusing or defocusing) upon reflection. Internal-wave focusing provides a necessary condition for large shear and overturning, as well as shear and bottom layer instabilities at slopes [7–10].

In a confined fluid domain, focusing usually prevails, leading to a concentration of wave energy on a closed loop, the internal-wave attractor [11]. Attractors eventually reach a quasi-steady state where dissipation is in balance

with energy injection regardless of the linear [12] or non-linear mechanism of dissipation [13]. High concentration of energy at attractors makes them prone [14] to triadic resonance instability (TRI), an instability similar to parametric subharmonic instability (PSI) but where viscosity plays a role [15–17]. The resonance occurs when temporal and spatial conditions are satisfied: $\Omega_1 + \Omega_2 = \Omega_0$ and $\vec{k}_1 + \vec{k}_2 = \vec{k}_0$, where \vec{k} is the wave vector while subscripts 0, 1 and 2 refer to the primary, and two secondary waves, respectively. The secondary waves can also be unstable, initiating a cascade.

In this letter, using laboratory experiments and numerical simulations, we suggest the energy cascade in internal-wave attractors as a novel laboratory model of a natural cascade. The cascade operates via a hierarchy of triadic interactions inducing high-vorticity events and mixing at sufficiently large forcing. The model setup represents a trapezoidal fluid domain filled with a uniformly stratified fluid where the energy is injected at global scale by wave-like motion of the vertical wall.

Transition to mixing is non-trivial since it is clearly beyond the domain of pure wave-wave interactions. Similarly, for surface waves, experimental reality deals with the cascades of wave-wave interactions, often called wave turbulence [18], significantly “contaminated” by effects of a finite-size fluid domain, wave breaking, wave cusps, nonlinear dispersion, viscous damping of wave field components [18–21]. The very specific dispersion relation for

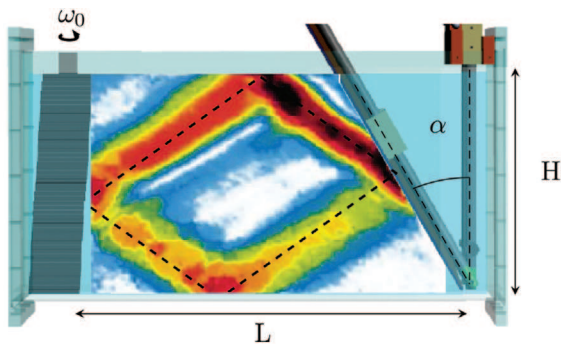


Fig. 1: (Color online) Experimental setup showing the wave generator on the left and the inclined slope on the right. The color inset is a typical PIV snapshot showing the magnitude $(u^2 + w^2)^{1/2}$ of the experimental two-dimensional velocity field obtained at $t = 15 T_0$ (case B of table 1) with $T_0 = 2\pi/(N\Omega_0)$. Black dashed lines show the billiard geometric prediction of the attractor.

internal waves introduces additional complications. For instance, in rotating fluids, which have a dispersion relation analogous to stratified fluids, the usefulness of the formalism of wave turbulence as a basis for the studies in rotating turbulence has been reported for experiments only recently [22]. For internal waves, the question received some attention theoretically [23] but remains fully open, from the experimental and the numerical points of view. Its consequences on mixing are moreover widely open.

Experimental and numerical setups. – A rectangular test tank of size $80 \times 17 \times 42.5 \text{ cm}^3$ is filled with a salt-stratified fluid [14] with $N \simeq 1 \text{ rad} \cdot \text{s}^{-1}$. A sliding sloping wall, inclined at an angle α to the vertical, delimits a trapezoidal fluid domain of length L (measured along the bottom) and depth H . The input forcing (see fig. 1) is introduced into the system by an internal-wave generator [24] (left wall) with a time-dependent vertical profile given by $a \sin(N\Omega_0 t) \cos(\pi z/H)$, where a is the amplitude of oscillations. The horizontal and vertical components of the velocity field u and w measured in the vertical mid-plane are then monitored as a function of spatial coordinates and time, using standard PIV technique [25,26] with a cross-correlation algorithm applied to analyzing windows of typical size 20-by-20 pixels. Below, we discuss mainly three different experiments from low to large forcing.

Numerical computations are performed with spectral element methods [27,28]. The geometry of the numerical setup closely reproduces the experimental one. The full system of equations being solved consists of the Navier-Stokes equation in the Boussinesq approximation, the continuity equation and the equation for the transport of salt. Typical meshes used in calculations consist of 50 thousand to half-million elements, with 8-to-10-order polynomial decomposition within each element. Time discretization was 10^{-4} to 10^{-5} of the external forcing period. Comparisons of experimental and numerical results present a

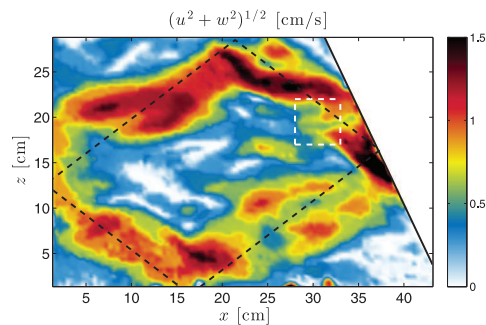


Fig. 2: (Color online) Well-developed instability. Magnitude of the experimental two-dimensional velocity field for case B (see table 1) at $t = 400 T_0$. Black dashed lines show the billiard geometric prediction of the attractor, which is fully recovered when considering small forcing amplitude [14] or at an earlier time when considering larger forcing as in fig. 1(a).

beautiful agreement, not only qualitative but also quantitative [29]. The numerical simulations clearly emphasize the importance of the three-dimensionality (case Z) to recover experimental laboratory results quantitatively, nevertheless 2D simulations (case X) are fully sufficient for qualitative agreement. We checked as in [14,29] that the temporal and spatial resonance conditions are satisfied experimentally and numerically.

Energy cascade revealed by the time-frequency analysis. – An example of an experimental velocity field is shown in fig. 2 at a much later stage. The attractor is still visible, but branches are deformed by the presence of secondary waves. As will be clear below, the internal-wave frequency spectrum which was initially a Dirac function has been progressively enriched to give rise to a very complex spectrum, through a cascade of central interest.

The experimental or numerical measured velocity fields are analyzed using a time-frequency representation [30] calculated at each spatial point. More precisely, we compute the quantity

$$S_u(\Omega, t) = \left\langle \left| \int_{-\infty}^{+\infty} u(x, z, \tau) e^{i\Omega\tau} h(t - \tau) d\tau \right|^2 \right\rangle_{xz}, \quad (1)$$

where u stands for the horizontal velocity component defined by the spatial coordinates x and z , while h is a smoothing Hamming window of energy unity. The calculations are performed with the dedicated Matlab toolbox [30]. To increase the signal-to-noise ratio, the data are averaged over the square represented in fig. 2 by the white dashed line: this is the meaning of the notation $\langle \cdot \rangle_{xz}$. We present only the analysis of the horizontal velocity field, but the results are similar for the vertical one.

Figure 3 presents the basic types of the newly observed cascades, with progressively increasing complexity: a simply monochromatic spectrum (case A of table 1), and rich multi-peak spectra (cases B and C).

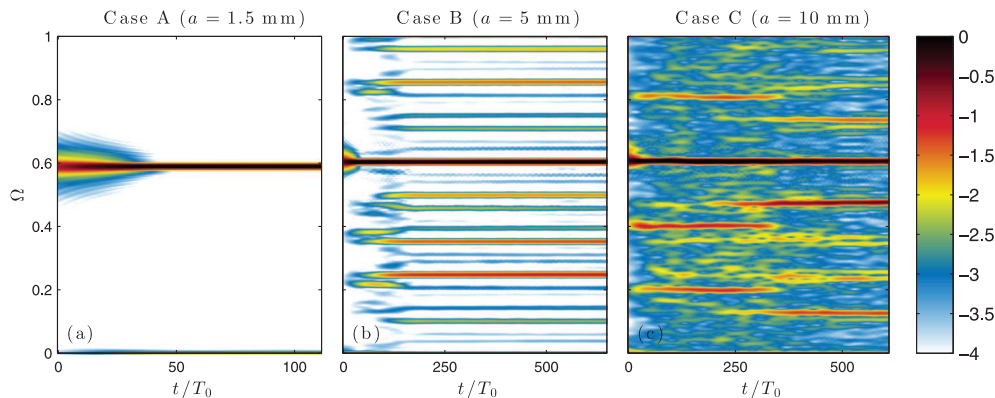


Fig. 3: (Color online) Time-frequency diagrams $\log_{10}(S_u(\Omega, t)/S_0)$, defined in eq. (1), for three different forcing amplitudes a . The quantity S_0 is defined as the time average of the main component $S_u(\Omega_0, t)$. The time-frequency diagrams are calculated on the $5 \times 5 \text{ cm}^2$ square region, close to the reflection of the attractor on the slope and indicated by the white dashed line in fig. 2.

Table 1: Parameters used for data presented in this letter.

	Type	Ω_0	H cm	L cm	α °	a mm	t_{\max} T_0
A	Exp.	0.59	30.0	45.0	27.3	1.5	149
B	Exp.	0.61	30.3	44.4	25.4	5	693
C	Exp.	0.60	30.1	44.2	24.8	10	651
X	2D sim.	0.62	30.8	45.6	29.9	1–9	1000
Z	3D sim.	0.59	30.0	45.6	29.9	2.5	270

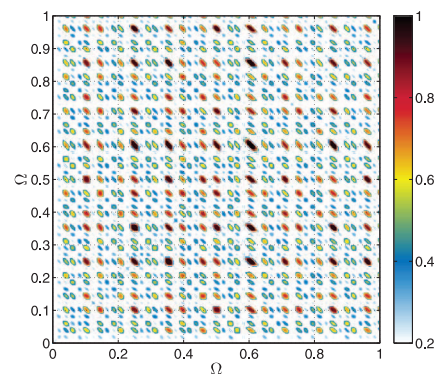


Fig. 4: (Color online) Bicoherence calculated from the signal represented in fig. 3(b).

The appropriate choice¹ of the length of the Hamming window h allows us to tune the resolution in frequency and time. A large (respectively, small) window provides a high (respectively, low) resolution in frequency and a weak (respectively, good) resolution in time. In order to separate the different frequencies in the cases B and C, a good resolution in frequency is necessary. The three panels have been obtained with a 15 min long Hamming window ($\simeq 80T_0$).

The size of the Hamming window is also responsible of the wrong impression that the continuous spectrum can be seen right at the start of the experiment in fig. 3(c). We checked that a time-frequency diagram with a shorter Hamming window emphasizes that the continuous spectrum does appear gradually like for the secondary frequency peaks in fig. 3(b). However, with such a choice, the frequency resolution would not be sufficient to discriminate the frequencies.

In well-developed cascades, apart from triads given by $\Omega_i \pm \Omega_j = \Omega_0$ associated with the primary wave oscillating

at the forcing frequency Ω_0 , secondary waves are acting as primary waves for higher-order triadic interactions. Below we illustrate this by calculation of the frequency triplets for case B where the spectrum is rich and the discrete peaks in the spectrum are well defined. To detect the frequency triplets, we use the bispectrum analysis. It measures the extent of statistical dependence among three spectral components $(\Omega_k, \Omega_i, \Omega_j)$ satisfying the relationship $\Omega_k = \Omega_i + \Omega_j$, with the quantity $M(\Omega_i, \Omega_j) = F(\Omega_i)F(\Omega_j)F^*(\Omega_i + \Omega_j)$, where F is the Fourier transform and $*$ denotes the complex conjugate. In practice, the bispectrum is usually normalized and considered in form of bicoherence which is 0 for triplets with random phases and 1 for triplets with perfect phase coupling [31]. The bicoherence shown in fig. 4 for case B is obtained using the HOSA Matlab toolbox as an average over the same square region used for the time-frequency analysis and in the time interval $[200, 690]T_0$. In addition to the strong peak $(0.61, 0.61)$ corresponding to the forcing frequency (therefore to self-correlation), the possible triplets satisfying the definition of triadic resonance at $\Omega_k = \Omega_0$ can be found on the line with slope -1 connecting the points $(0, 0.61)$ and $(0.61, 0)$. This emphasizes

¹As the size of the Hamming window is on the order of the duration of the experiments, some edge problems appear at the beginning and end of the time-frequency diagrams. This can be clearly seen in fig. 3, at the beginning of all diagrams, around Ω_0 , where the peak is wider than in the rest of the experiments. This problem is not visible at the end because we deliberately cut off diagrams just before.

that the mechanism at play is triadic. Other peaks are also visible corresponding to other choices of Ω_k revealing that the instability mechanism is repeated and leads to a cascade.

Internal-wave attractors in the large-amplitude regime present therefore a nice cascade of triadic interactions transferring energy from large-scale monochromatic input to many discrete internal-wave frequencies. Moreover, comparing fig. 3(b) with fig. 3(c), we note that the frequency spectrum remains qualitatively similar: a “discrete” part, with well-defined peaks, and a “continuous” part (not visible in fig. 3(b) but really present). However, in case C, the magnitudes of peaks in the “discrete” part of the spectrum fluctuate in time, and the energy content of the “continuous” part is significantly higher (two orders of magnitude), as is clearly visible from the background color. This cascade thus presents features reminiscent of wave turbulence, worth to explore.

Signatures of discrete wave turbulence? – The presence of wave-turbulence-like phenomena and a possible qualitative transition from discrete wave turbulence to wave-turbulence-like regime with extreme events is illustrated in fig. 5 using the energy spectra experimentally obtained for different wave number intervals as a diagnostic tool [22].

The wave energy spectra are computed using the following procedure. Horizontal and vertical velocity fields $u(x, z, t)$ and $w(x, z, t)$ are obtained with 2D PIV measurements in the entire trapezoidal domain, on a grid with $0.36 \text{ cm} \times 0.36 \text{ cm}$ spatial resolution and 0.5 s temporal resolution². A three-dimensional (two dimensions for space, one for time) Fourier transform³ of these fields leads to $\hat{u}(k_x, k_z, \Omega)$ and $\hat{w}(k_x, k_z, \Omega)$. One can thus define the 2D energy spectrum by

$$E(k_x, k_z, \Omega) = \frac{|\hat{u}(k_x, k_z, \Omega)|^2 + |\hat{w}(k_x, k_z, \Omega)|^2}{2ST}, \quad (2)$$

where $S = 45 \times 30 \text{ cm}^2$ is the area of the PIV measurement and $T = 80T_0$ its duration. The spatio-temporal resolution of our measurements leads to upper bounds in wave numbers and frequency. We thus have $k_{\max} = 8.6 \text{ rad/cm}$ and $N\Omega_{\max} = 6.28 \text{ rad/s}$.

In the dispersion relation for internal waves, $\Omega = \sin\theta$, the wave vector \vec{k} and its components do not appear directly but they are linked with the angle θ by $\sin\theta = k_x / \sqrt{k_x^2 + k_z^2}$. To compute the energy spectrum

²2D PIV measurements are performed with a 10×10 pixel resolution. The x -direction length being 45 cm and the z -direction length 30 cm , this leads to a resolution of 0.36 cm in both directions. The temporal resolution is 0.5 s and we used $80T_0$ to compute each energy spectrum. Thus, the total data grid size is $125 \times 80 \times 1600$ points.

³For the Fourier transform, we padded the velocity fields with zeros to increase the resolution in the wave number and frequency. The final data grid used for $E(k_x, k_z, \Omega)$ is $400 \times 400 \times 2000$. The resolution in the wave number is thus $\Delta k_x = \Delta k_z = 0.043 \text{ rad/cm}$ and the frequency resolution is $N\Delta\Omega = 6.28 \times 10^{-3} \text{ rad/s}$.

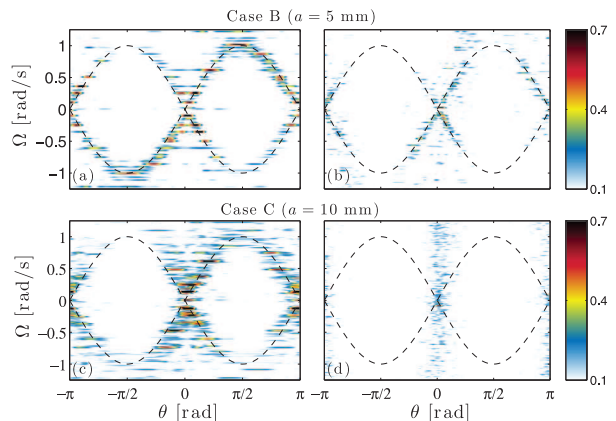


Fig. 5: (Color online) Energy spectra $E(\theta, \Omega)/E(\Omega)$ for two forcing amplitudes and two length scale intervals: 0.22 to $1 \text{ rad} \cdot \text{cm}^{-1}$ for (a) and (c); 1 to $1.86 \text{ rad} \cdot \text{cm}^{-1}$ for (b) and (d) (*i.e.* wavelengths 28.5 cm to 6.3 cm for the left panels, while 6.3 cm to 3.4 cm for the right ones). The dashed black lines correspond to the dispersion relation $\Omega = \pm \sin\theta$. In panels (a) and (b) which correspond to the triadic cascade experiment B, energy is localized on the dispersion relation confirming the wave turbulence picture. For the mixing box experiment C, the localization is only preserved for panel (c), while it is not the case for panel (d).

as a function of variable θ , one can interpolate the energy spectrum $E(k_x, k_z, \Omega)$ to get $E(k, \theta, \Omega)$, where k is the norm of the wave vector. For this interpolation, we define Δk as the smallest wave vector that has data points in the Cartesian coordinates. Here, $\Delta k = 0.043 \text{ rad/cm}$ and we chose $k_{\min} = 5\Delta k \approx 0.22 \text{ rad/cm}$ to have a good interpolation at low wave numbers. We chose to take 200 points for k between 0 and k_{\max} and 300 points for θ between $-\pi$ and π . Then, one can integrate over the entire range of wave vectors $[k_{\min}, k_{\max}]$ as follows:

$$E(\theta, \Omega) = \int_{k_{\min}}^{k_{\max}} E(k, \theta, \Omega) k dk, \quad (3)$$

or on any range of wave vectors between k_{\min} and k_{\max} . Because the energy levels of the different frequencies cover several orders of magnitude, one has to normalize the energy density $E(\theta, \Omega)$ by the frequency energy density $E(\Omega)$, obtained by integrating $E(\theta, \Omega)$ on all θ range.

This is what has been done in fig. 5. The two spatial integration ranges are $[0.22, 1]$ and $[1, 1.86] \text{ rad/cm}$, for cases B and C. For case B, the first integration range represents 84% of the energy in the entire range $[k_{\min}, k_{\max}]$ while the second represents 11% . For case C, the first range has 82% of the total energy and the second one 11% .

The linear dispersion relation is seen to attract the maxima of the energy spectra regardless of the length scales in case B, and for large-scale perturbations only, in case C. Short-scale perturbations in the latter case clearly escape any relation to linear wave dynamics. This is expected to be due to extreme events, natural precursors to mixing.

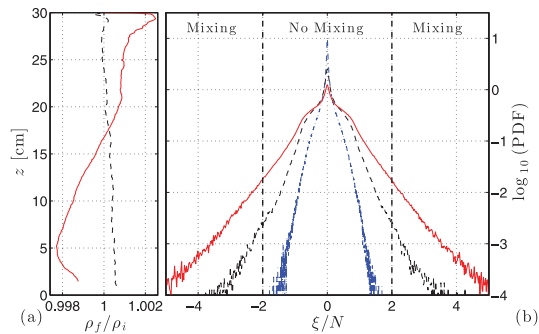


Fig. 6: (Color online) Mixing and vorticity. (a) Ratio between the density profiles measured after and before the experiments for cases B (black) and C (red). (b) Experimental probability density functions of the vorticity $\xi(x, z, t)$ in the tank, calculated on the grid from experimental images for cases A (blue), B (black) and C (red). Samples are taken using 400 images close to the end of the experiment, when the wave regime is fully developed. The individual PDFs are averaged over roughly 8×10^3 equally spaced points covering the whole wave field, and are normalized by the buoyancy frequency N .

The above results are convincing signatures of a discrete wave turbulence framework for internal waves in the intermediate forcing amplitude regime. For the largest amplitude, we have indications that a system is beyond the wave-turbulence-like regime and has reached a mixing regime.

Mixing inferred from vorticity distribution. – An important issue is whether or not sufficiently energetic internal-wave motion can produce an irreversible energy contribution to mixing. Figure 6(a) presents the comparison between density profiles measured before and after experiments: while no modification of the density (within experimental error) can be observed in case B, one gets a clear evidence of mixing in case C.

Further, differences between the regimes corresponding to low and high mixing are clearly seen in statistics of extreme events. This statistic is obtained by the calculation of probability density functions (PDF), a widely used tool for describing turbulence [32]. Since we are interested in small-scale events destabilizing the stratification, we take the horizontal y -component of vorticity $\xi(x, z, t) = \partial u/\partial z - \partial w/\partial x$ measured in the vertical mid-plane of the test tank as a relevant quantity and consider its PDF. In fig. 6(b), we present the vorticity PDFs corresponding to different wave regimes in the attractor. Note that the area under each PDF is equal to unity, which allows a meaningful comparison between the probabilities of extreme events in the cases A, B and C. In a stable attractor (see case A), extreme events (defined with respect to $2N$, see below) are completely absent and the wave motion is concentrated within the relatively narrow branches of the attractor while the rest of the fluid is quiescent. Accordingly, the PDF has a sharp peak at zero vorticity and is fully localized between well-defined maximum and minimum values of vorticity. In cases B and C, the PDF

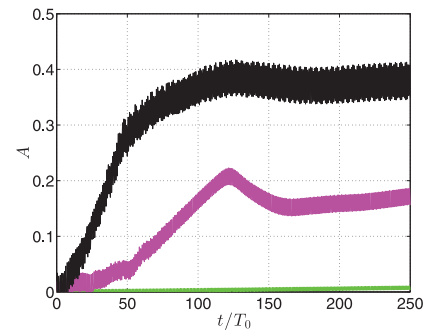


Fig. 7: (Color online) Potential energy. Time evolution of the normalized potential energy for three different forcing amplitudes: green ($a = 1$ mm), magenta ($a = 5$ mm) and black ($a = 9$ mm). The curves were obtained using long-duration 2D numerical simulations for case X of table 1.

broadens and the development of TRI increases the probability of extreme events due to summation of primary and secondary wave components.

The occurrence of local destabilizing events can be viewed as a competition between stratification and vorticity. In a two-dimensional flow, a relevant stability parameter is a version of the Richardson number, which can be introduced as $\text{Ri}_\xi = N^2/\xi^2$. For a horizontal stratified shear flow this parameter reduces to the conventional gradient Richardson number $\text{Ri} = N^2/(du/dz)^2$, where du/dz is the velocity shear. Flows with large Ri are generally stable, and the turbulence is suppressed by the stratification. The classic Miles-Howard necessary condition for instability requires that $\text{Ri} < 1/4$ somewhere in the flow. If this condition is satisfied, the destabilizing effect of shear overcomes the effect of stratification, and some mixing occurs as a result of overturning. The threshold value $|\xi/N| = 2$ is marked on the plot of vorticity PDFs. It can be seen that data corresponding to cases B and C have “tails” extending into the domains $|\xi/N| > 2$. The area under the tails represents the probability of events of strength $|\xi/N| > 2$. In case C, this probability is an order of magnitude greater than in case B, in qualitative agreement with much higher mixing in case C as compared to case B.

The measure of the mixing can be defined as the normalized potential energy $A(t) = (E_p(t) - E_p(0))/(E_p^* - E_p(0))$, in which $E_p = \int dx dz \rho(x, z, t)gz$ stands for the potential energy and $*$ stands for its final value for the fully mixed system. For the mixing box experiment (see profile C shown in fig. 6(a)), one attains a final value $A \approx 25\%$. Mixing is therefore remarkably strong: two hours of experiment in case C are equivalent to the action of molecular diffusion on a time scale of several weeks.

The density profiles measured before and after the experimental runs do not allow monitoring the time evolution of the mixing dynamics. However, these dynamics are nicely revealed in numerical calculations as shown in fig. 7. The dramatic effect of the amplitude of oscillations on the mixing (with other parameters being fixed) is clearly seen,

ranging from slow erosion of initial stratification to violent mixing.

Conclusions. – In the present letter, we have reported and described a novel experimental and numerical setup, an “internal-wave mixing box”, which presents a complete cascade of triadic interactions transferring energy from large-scale monochromatic input to multi-scale internal-wave motion, and subsequent cascade to mixing. We have reported interesting signatures of discrete wave turbulence in a stratified idealized fluid problem. Moreover, we have shown how extreme vorticity events lead to mixing that occurs in the bulk of the fluid, similarly to [33].

Confinement of the fluid domain and focusing of wave energy at an attractor play an important role in the cascade; however, these conditions are not very restrictive. Under natural conditions, internal waves can travel thousands of kilometers which means that quite large bodies of water (for instance, seas) can be considered as confined domains. Also, since attractors can occur in laterally open domains with an appropriately shaped bottom [34], the mechanism of the triadic wave cascade and the bulk mixing described in the present paper is likely to occur in domains with multi-ridge topography as described in [35].

From a broader perspective, the complete scenario that we have identified here thus provides an analog of energy cascade in the abyss that should shed new light on the full energy cascade in the oceans. However, the quasi-two-dimensional setup and the absence of Coriolis forces hinder, at this stage, the generalization beyond the idealized fluid problem that we study here. Work along these lines to more closely reproduce the cascade in the oceans would be highly interesting.

EVE gratefully acknowledges his appointment as a Marie Curie incoming fellow at ENS de Lyon. This work has been partially supported by ONLITUR grant (ANR-2011-BS04-006-01), by Russian ministry of education (RFMEFI60714X0090), RFBR (15-01-06363) and CFD web-laboratory unihub.ru. It has been carried out with resources of PSMN from ENS de Lyon. Most of the numerical simulations were performed on supercomputer Lomonosov of Moscow State University. We thank P. BORGNAT, P. FLANDRIN, N. MORDANT, A. OBABKO, H. SCOLAN, A. VENAÏLE, A. WIENKERS for helpful discussions.

REFERENCES

- [1] GARRETT C. and KUNZE E., *Annu. Rev. Fluid Mech.*, **39** (2007) 57.
- [2] IVEY G. N., WINTERS K. B. and KOSEFF J. R., *Annu. Rev. Fluid Mech.*, **40** (2008) 169.
- [3] MUNK W., *Deep-Sea Res.*, **13** (1966) 707.
- [4] MUNK W. and WUNSCH C., *Deep-Sea Res.*, **45** (1998) 1977.
- [5] NIKURASHIN M. and VALLIS G., *J. Phys. Oceanogr.*, **42** (2012) 1652.
- [6] MCCOMAS C. H. and MULLER P., *J. Phys. Oceanogr.*, **11** (1981) 970.
- [7] BUHLER O. and MULLER C. J., *J. Fluid Mech.*, **588** (2007) 1.
- [8] DAUXOIS T. and YOUNG W. R., *J. Fluid Mech.*, **390** (1999) 271.
- [9] GAYEN B. and SARKAR S., *Phys. Rev. Lett.*, **104** (2010) 218502.
- [10] ZHANG H. P., KING B. and SWINNEY H. L., *Phys. Rev. Lett.*, **100** (2008) 244504.
- [11] MAAS L. R. M., BENIELLI D., SOMMERIA J. and LAM F. P. A., *Nature*, **388** (1997) 557.
- [12] HAZEWINKEL J., VAN BREEVOORT P., DALZIEL S. and MAAS L. R. M., *J. Fluid Mech.*, **598** (2008) 373.
- [13] JOUVE L. and OGILVIE G. I., *J. Fluid Mech.*, **745** (2014) 223.
- [14] SCOLAN H., ERMANYUK E. and DAUXOIS T., *Phys. Rev. Lett.*, **110** (2013) 234501.
- [15] BOURGET B., DAUXOIS T., JOUBAUD S. and ODIER P., *J. Fluid Mech.*, **723** (2013) 1.
- [16] KOUDELLA C. R. and STAQUET C., *J. Fluid Mech.*, **548** (2006) 165.
- [17] SUTHERLAND B. R., *J. Fluid Mech.*, **724** (2013) 1.
- [18] NAZARENKO S. V., *Wave Turbulence, Lect. Notes Phys.*, Vol. **825** (Springer, Berlin) 2011.
- [19] AUBOURG Q. and MORDANT N., *Phys. Rev. Lett.*, **114** (2015) 144501.
- [20] DEIKE L., FUSTER D., BERHANU M. and FALCON E., *Phys. Rev. Lett.*, **112** (2014) 234501.
- [21] DENISSENKO P., LUKASCHUK S. and NAZARENKO S., *Phys. Rev. Lett.*, **99** (2007) 014501.
- [22] YAROM E. and SHARON E., *Nat. Phys.*, **10** (2014) 510.
- [23] LVOV Y. V. and TABAK E. G., *Phys. Rev. Lett.*, **87** (2001) 168501.
- [24] MERCIER M., *J. Fluid Mech.*, **657** (2010) 308.
- [25] WESTERWEEEL J., *Meas. Sci. Technol.*, **8** (1997) 1379.
- [26] FINCHAM A. and DELERCE G., *Exps. Fluids*, **29** (2000) S13.
- [27] FISCHER P., *J. Comput. Phys.*, **133** (1997) 84.
- [28] FISCHER P., LOTTES J., POINTER D. and SIEGEL A., *J. Phys.: Conf. Ser.*, **125** (2008) 012076.
- [29] BROUZET C., SIBGATULLIN I., SCOLAN H., ERMANYUK E. and DAUXOIS T., to be published in *J. Fluid Mech.* (2016).
- [30] FLANDRIN P., *Time-Frequency/Time-Scale Analysis, Time-Frequency Toolbox for Matlab* (Academic Press) 1999.
- [31] FAVIER B., GRANNAN A. M., LE BARS M. and AURNOU J. M., *Phys. Fluids*, **27** (2015) 066601.
- [32] BATCHELOR G. K., *The Theory of Homogeneous Turbulence* (Cambridge University Press, Cambridge) 1982.
- [33] SWART A., MANDERS A., HARLANDER U. and MAAS L., *Dyn. Atmos. Oceans*, **50** (2010) 1634.
- [34] ECHEVERRI P., YOKOSHI T., BALMFORTH N. J. and PEACOCK T., *J. Fluid Mech.*, **669** (2011) 354.
- [35] POLZIN K. L., TOOLE J. M., LEDWELL J. R. and SCHMITT R. W., *Science*, **276** (1997) 5309, 93.