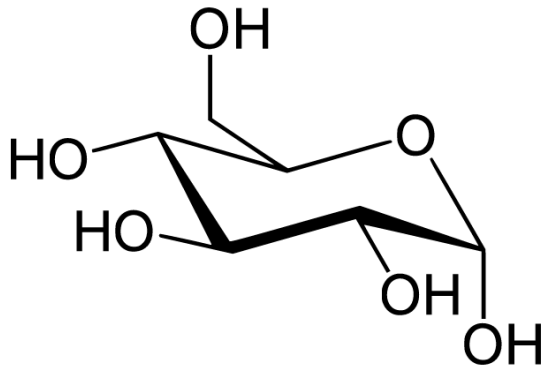


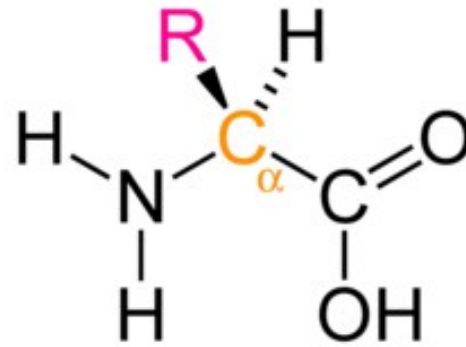
Utilisation du pool chiral

Élément imposé : auxiliaire chiral

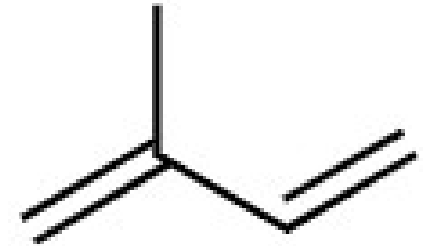
Introduction



Sucre

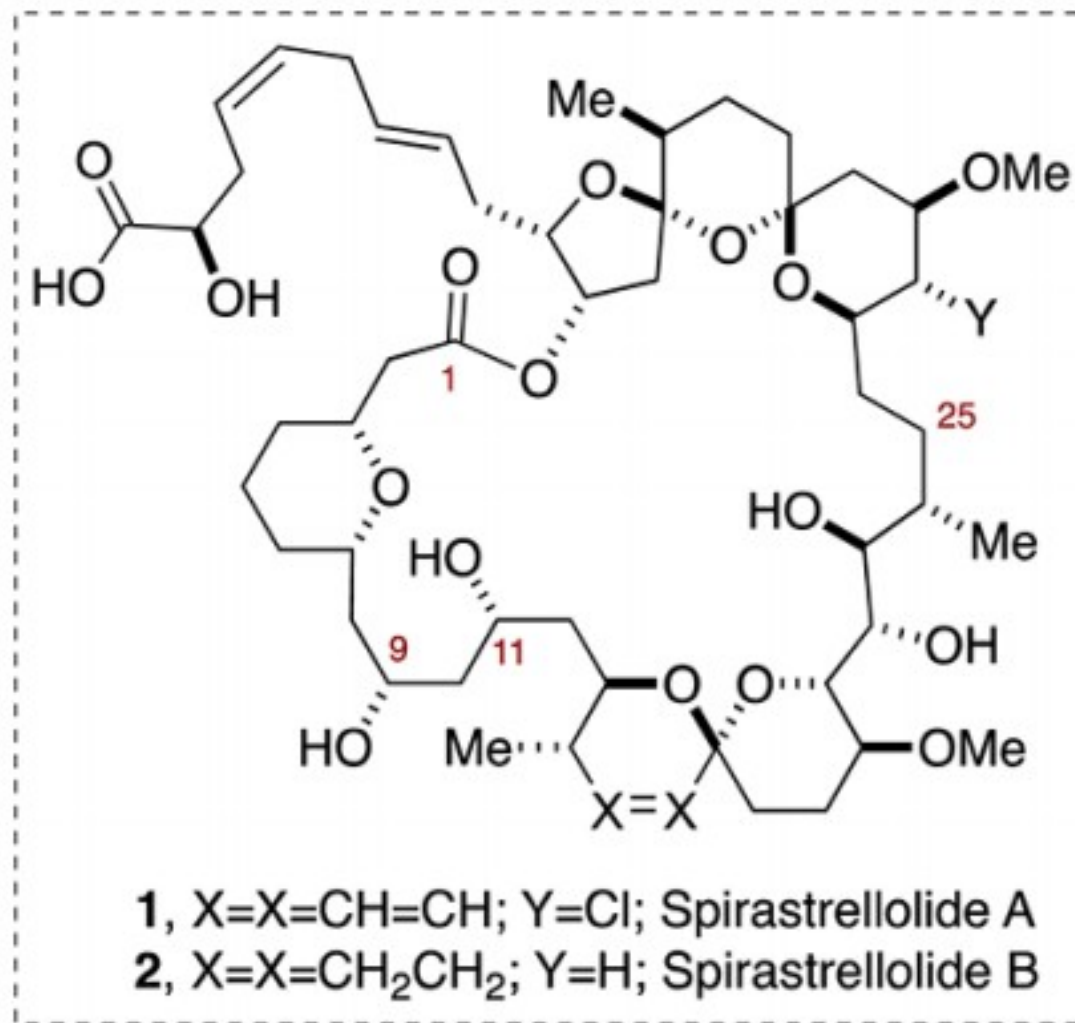
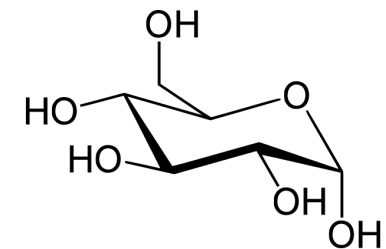


Acide aminé



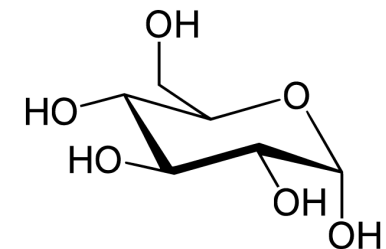
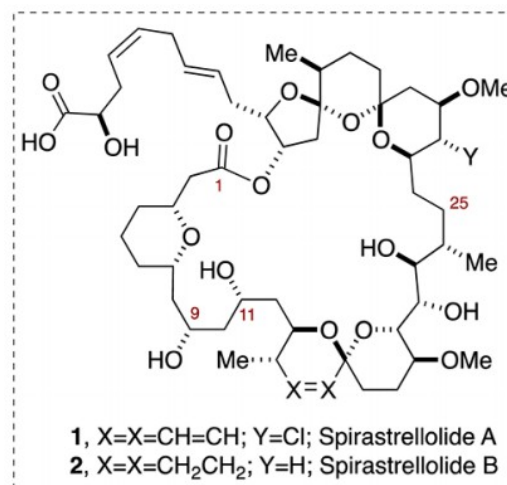
Isoprène

Comme réactif

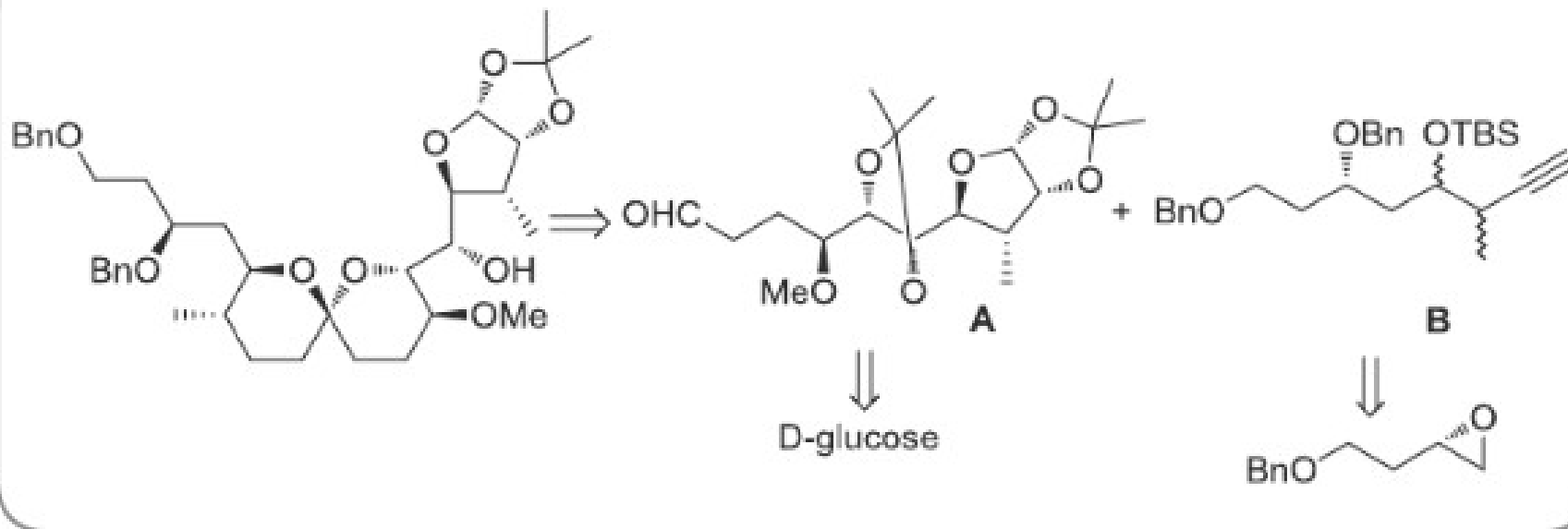


Structure de la spirastrellolide

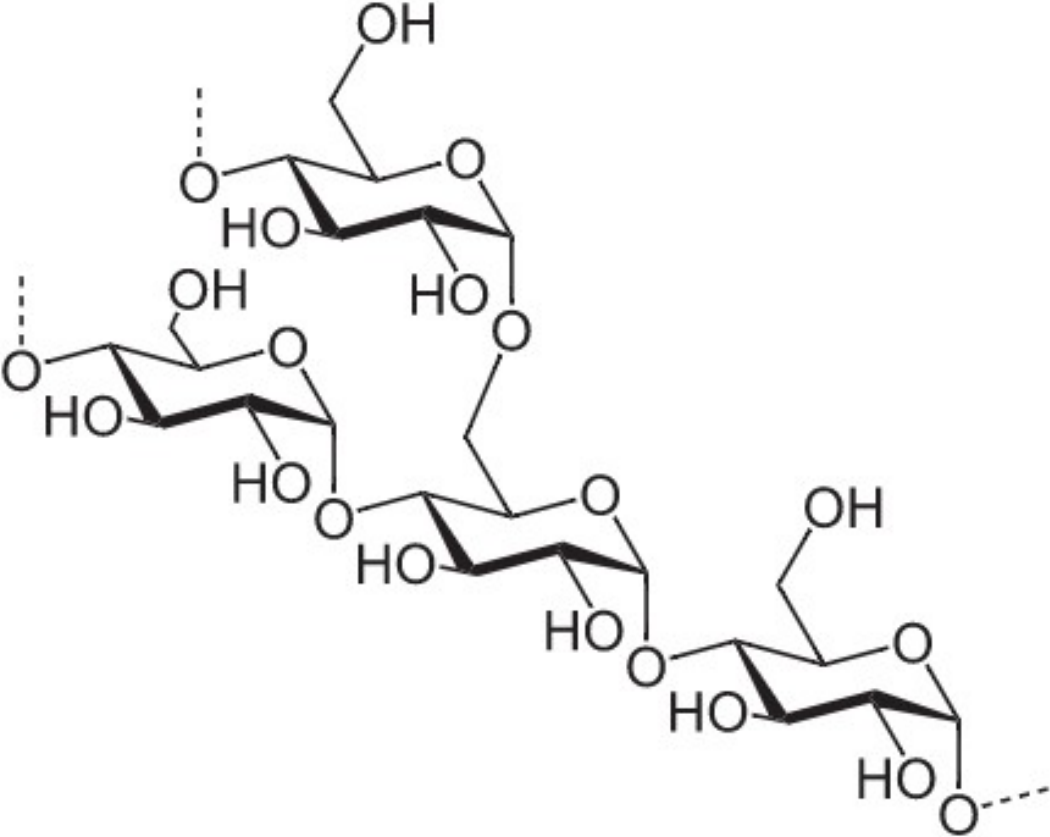
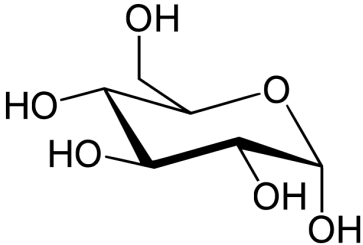
Comme réactif



Rétrosynthèse

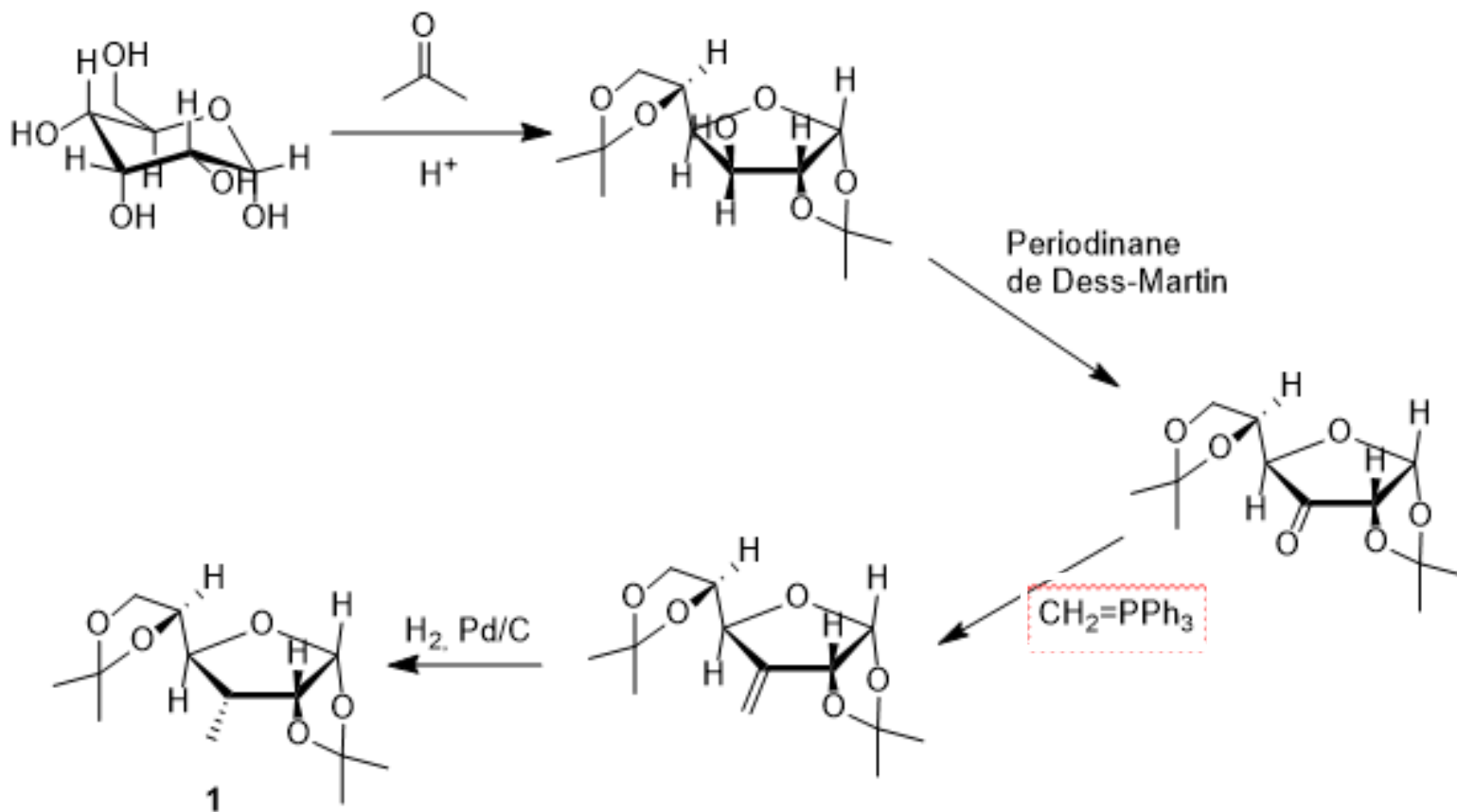
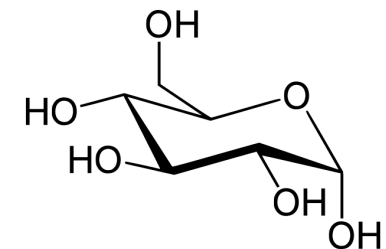


Comme réactif



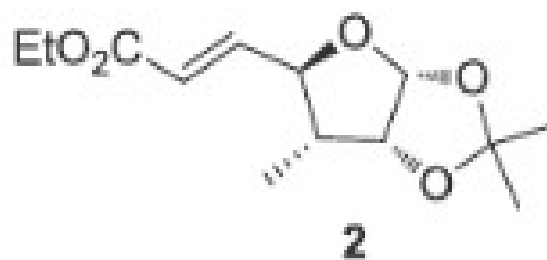
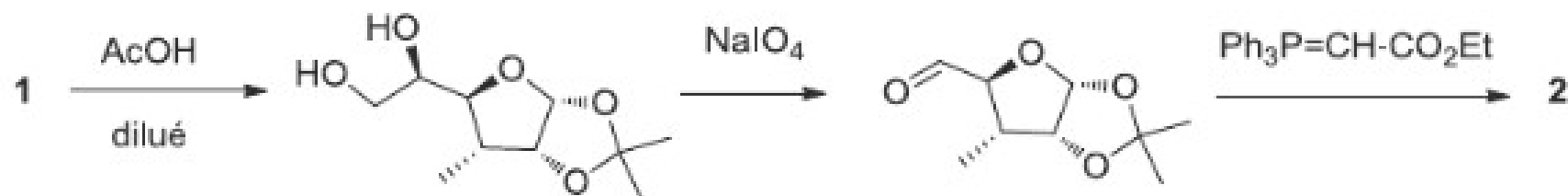
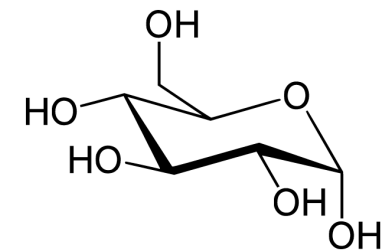
Structure de l'amidon

Comme réactif



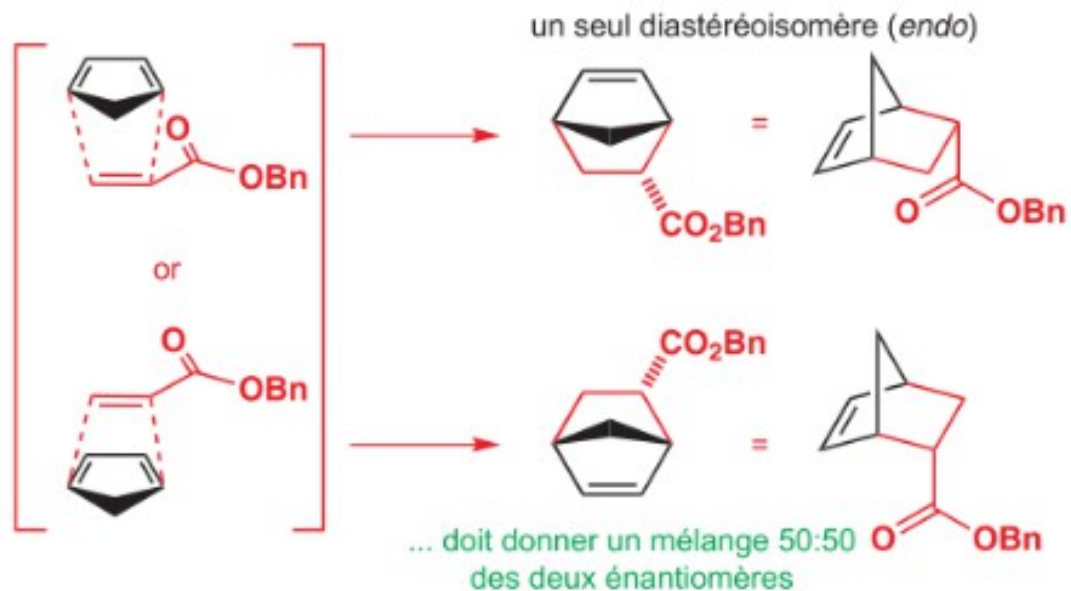
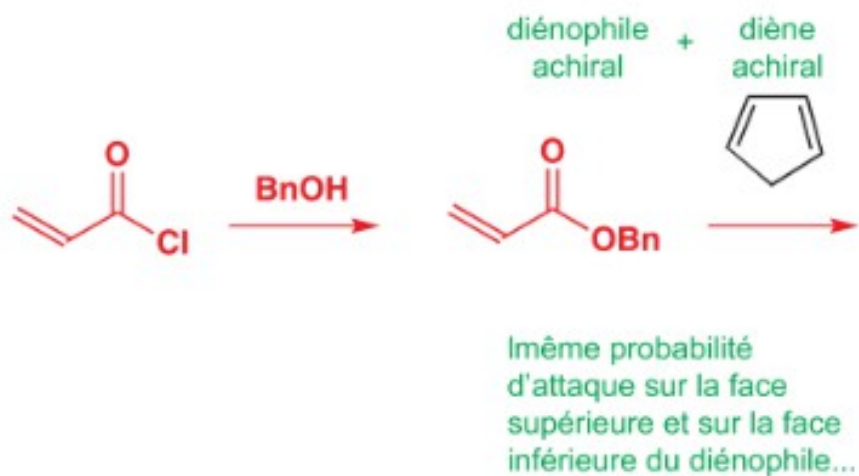
Premières étapes de la synthèse de la spirastrellolide B
à partir du D-glucose

Comme réactif

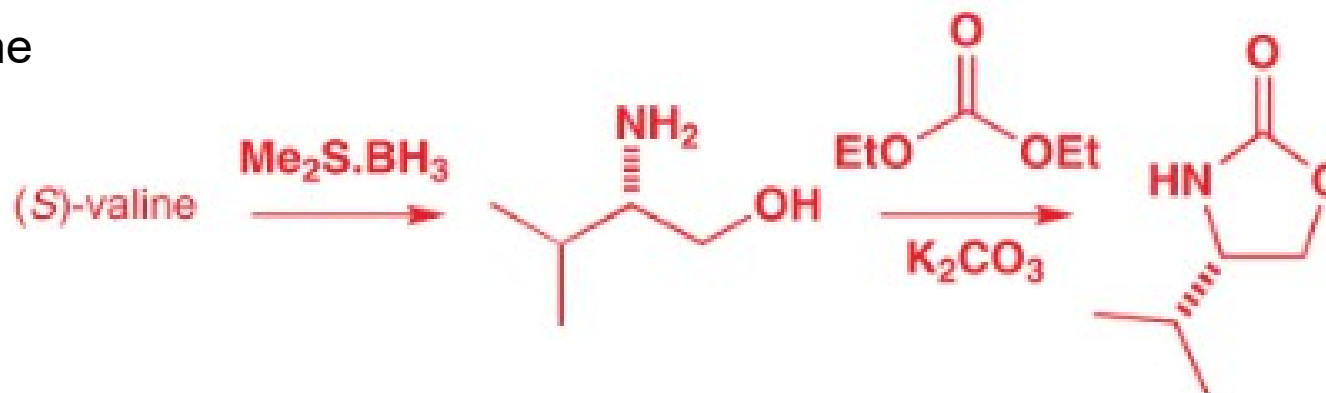
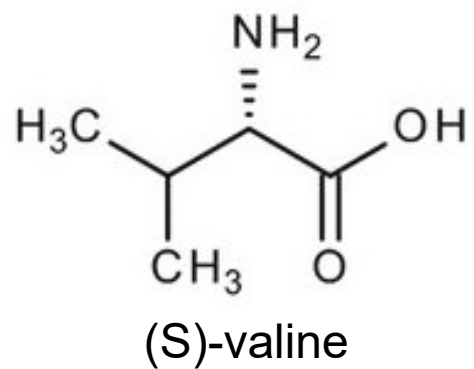
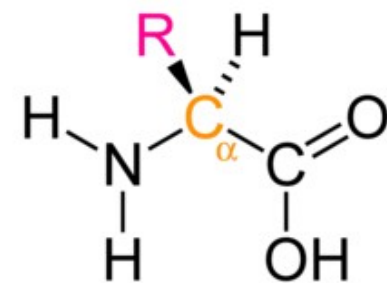


Diels-Alder

la réaction de Diels-Alder donne un produit racémique

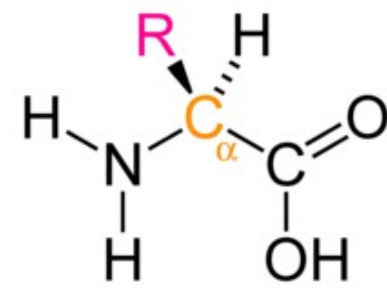


Comme auxiliaire chiral



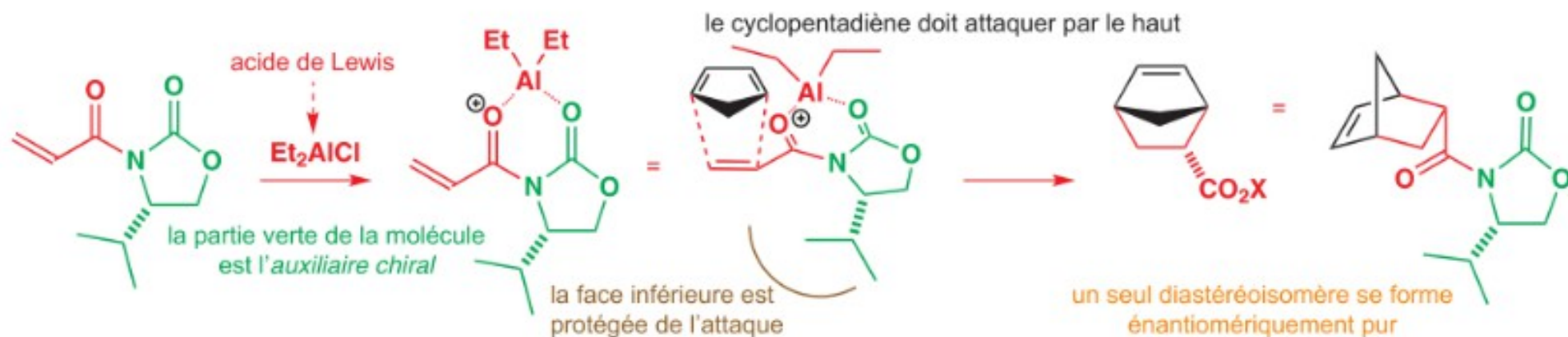
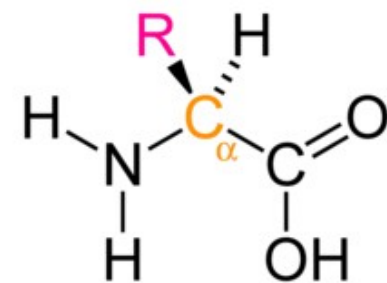
Synthèse d'une oxazolidinone d'Evans

Comme auxiliaire chiral



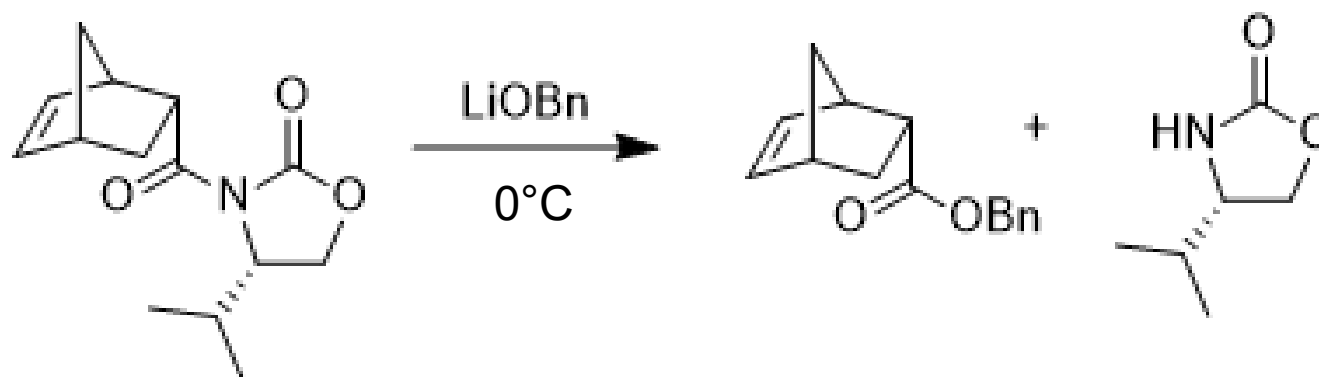
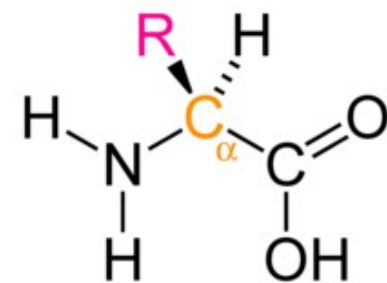
Fixation de la copule chirale sur le réactif

Comme auxiliaire chiral



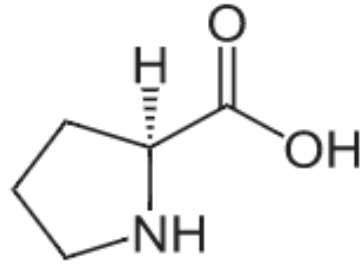
Réaction de Diels-Alder diastéréosélective

Comme auxiliaire chiral

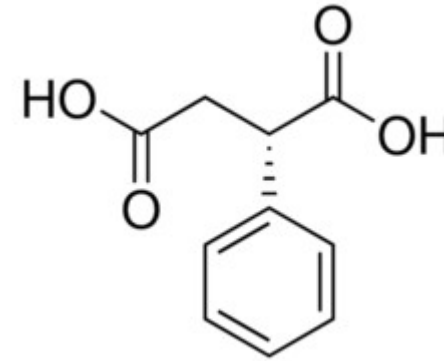


Elimination de la copule chirale

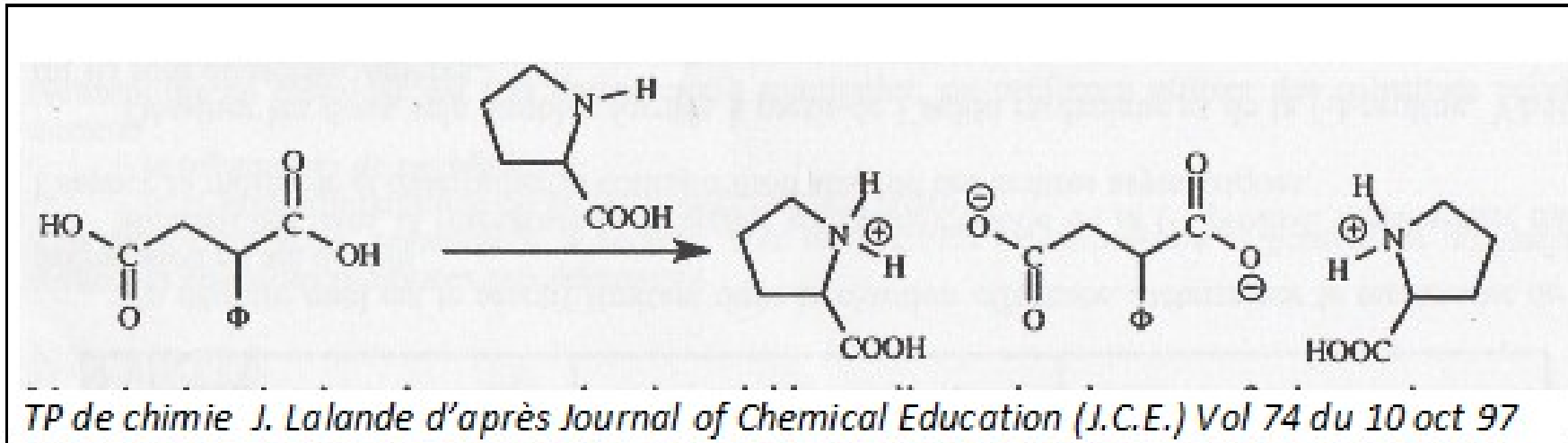
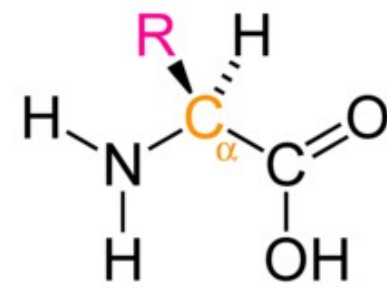
Comme agent de dédoublement



(L)-proline

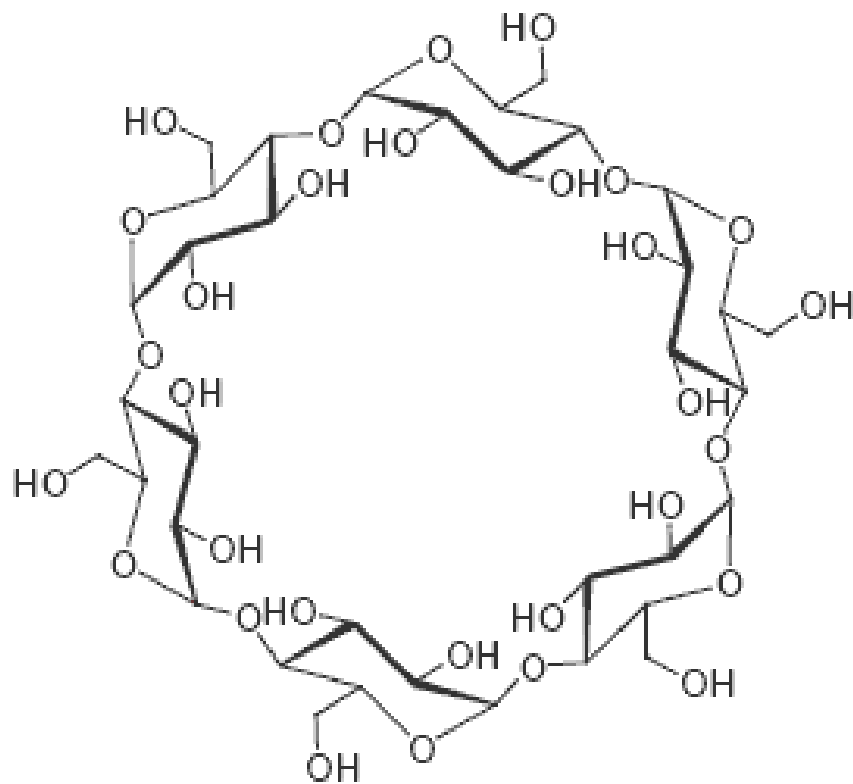
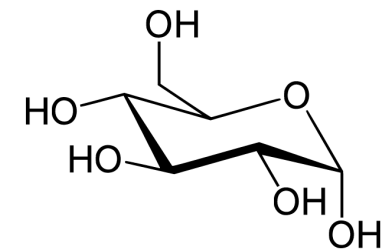


(+)-acide 2-phénylsuccinique



Dédoublement de l'acide 2-phénylsuccinique par la (L)-proline

Pour des colonnes chirales



Cyclodextrine