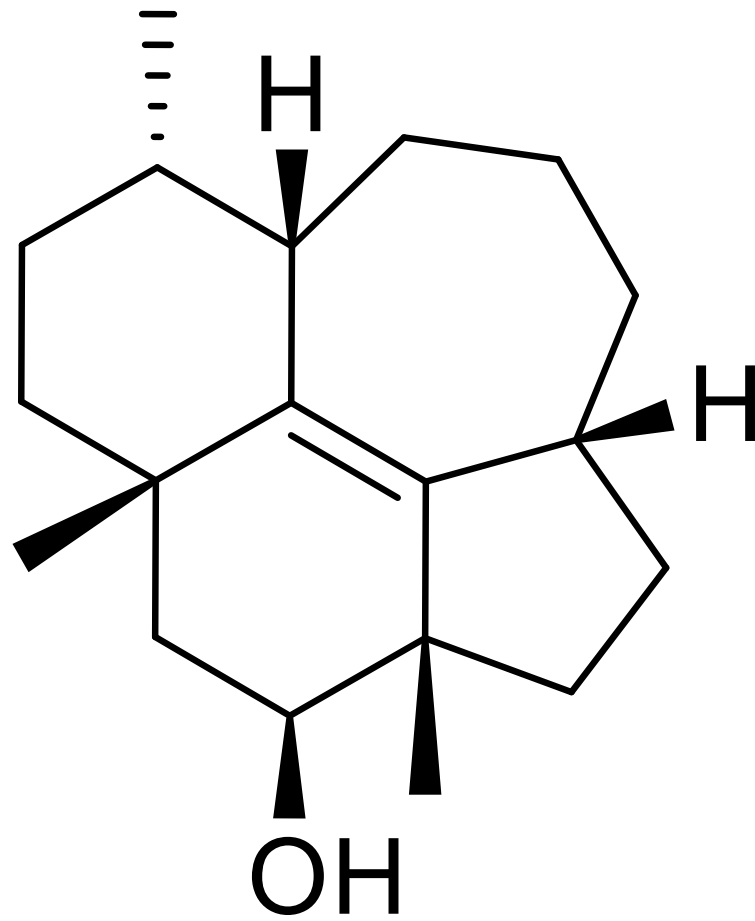


Construction du
squelette carboné:
Cyclisation

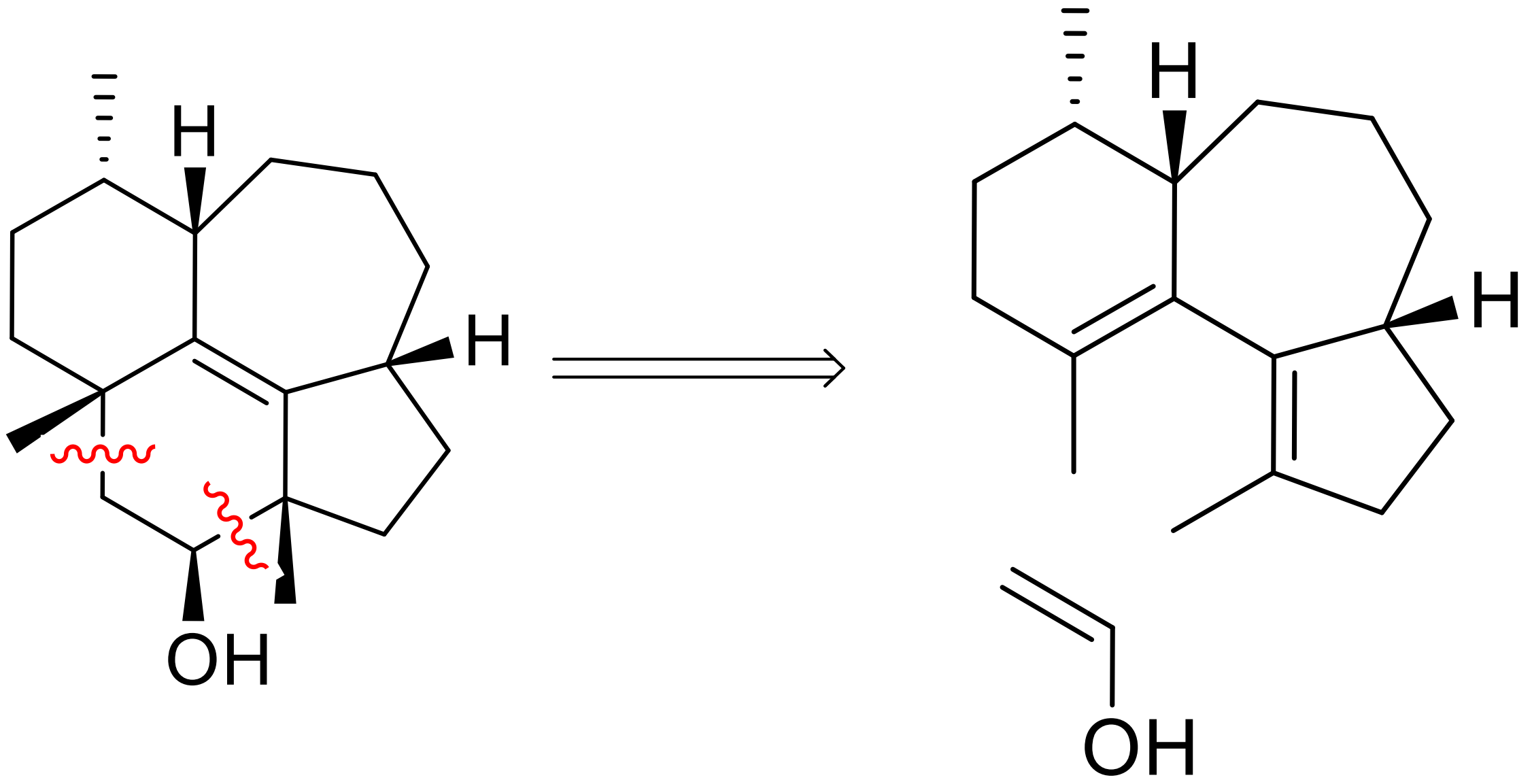
Comment?

Réactions de création de liaison carbone carbone:

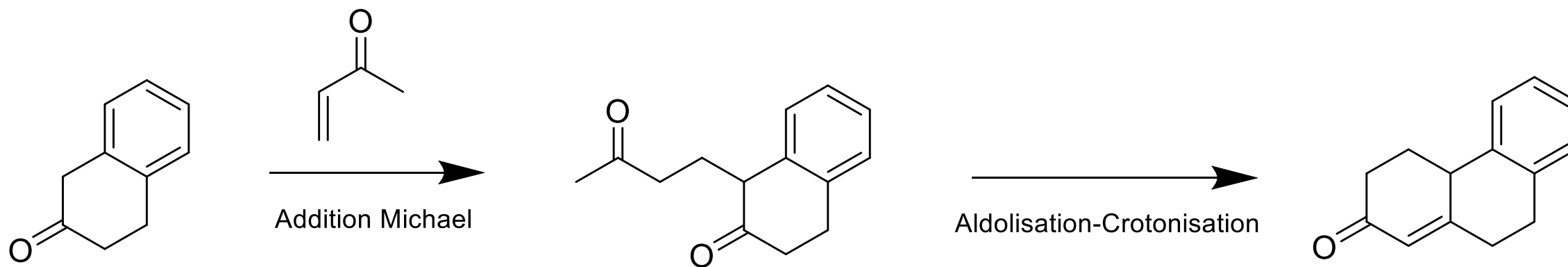
- Grignard
- Aldolisation/Crotonisation
- Addition de Michael
- Diels-Alder
- Wittig
- Métathèse



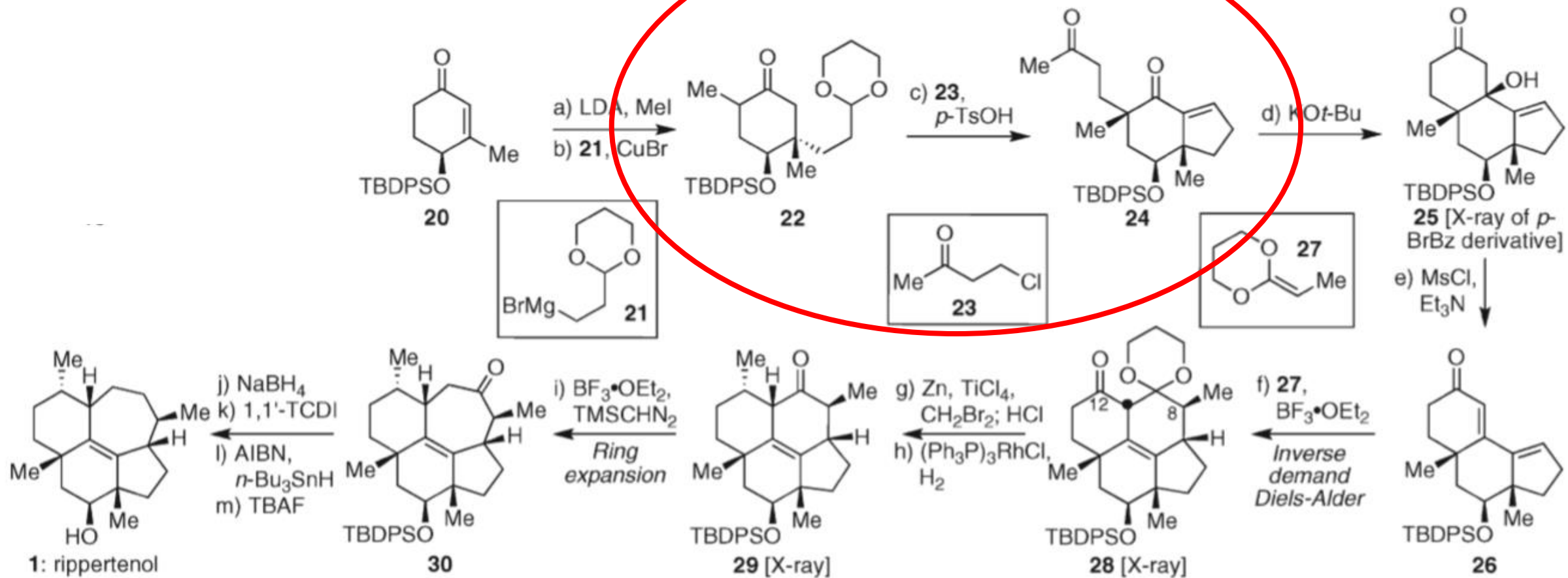
Ripperténol



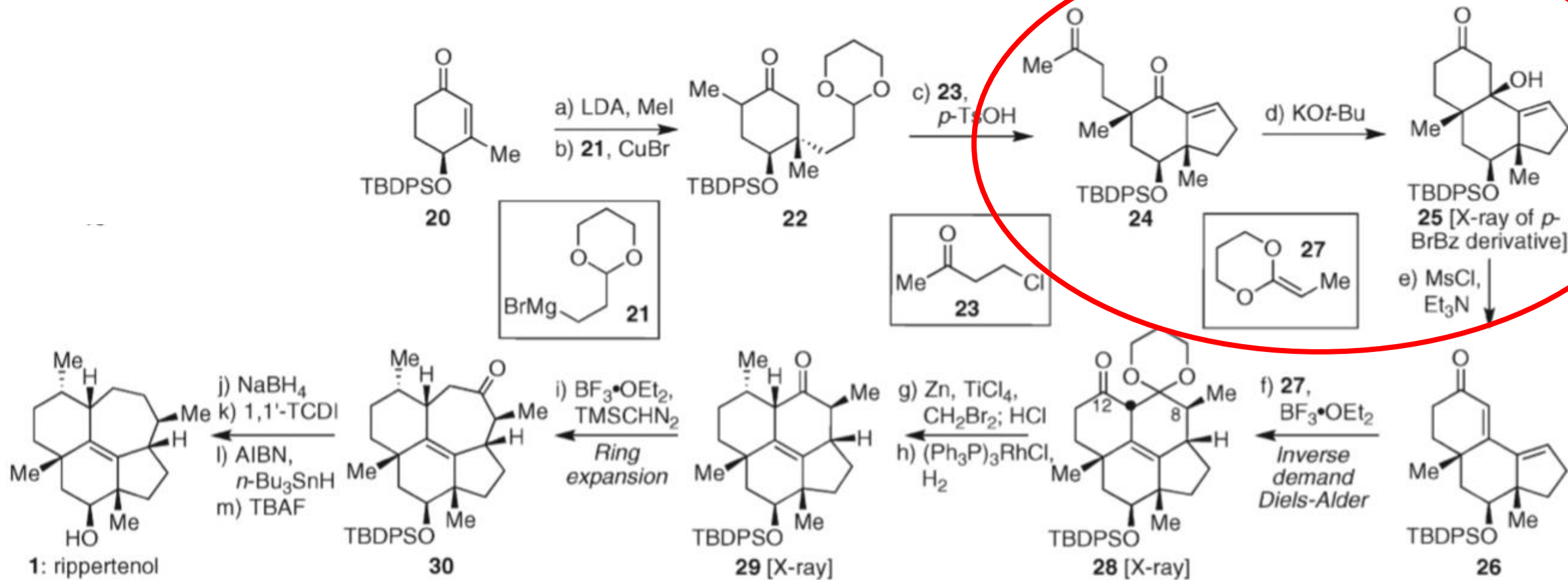
Annélation de Robinson



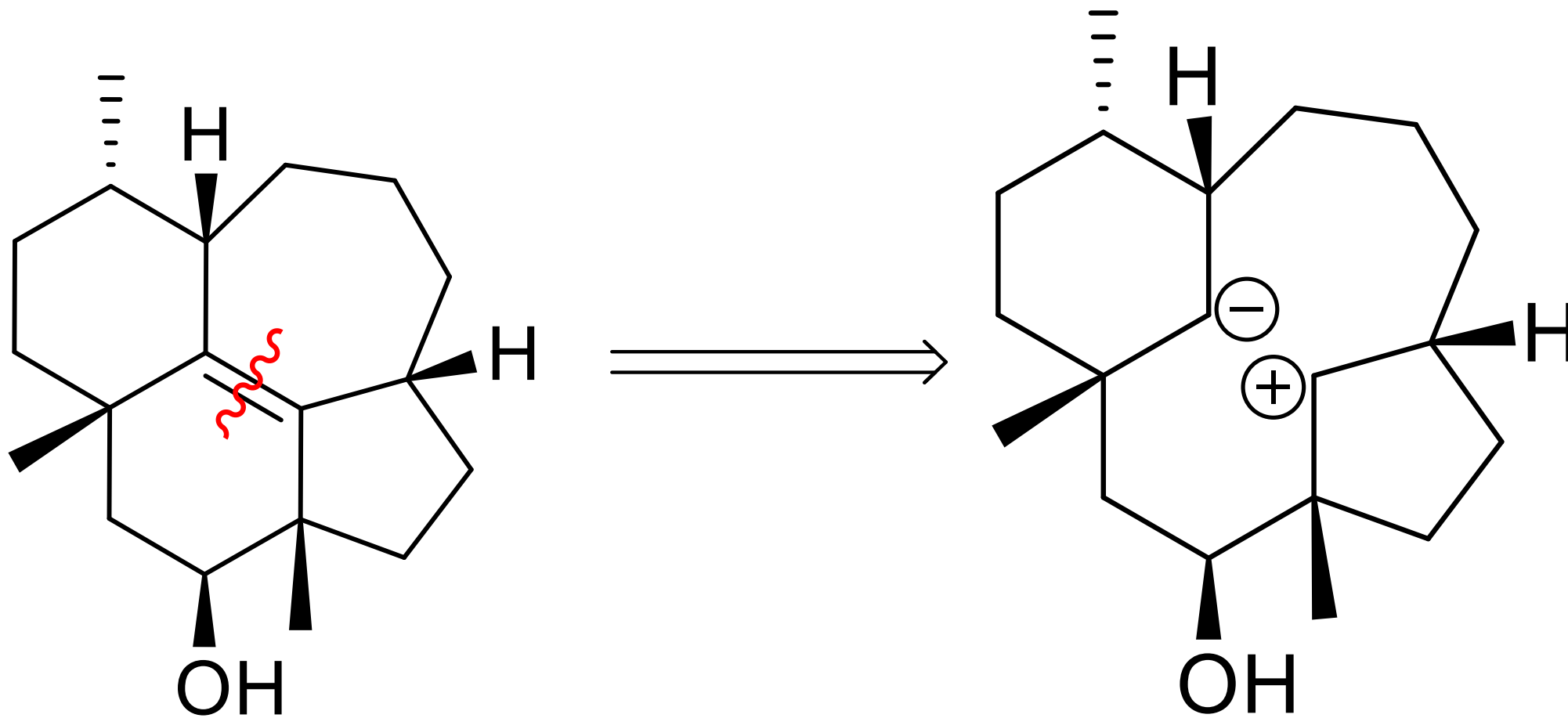
Crotonisation Acide:



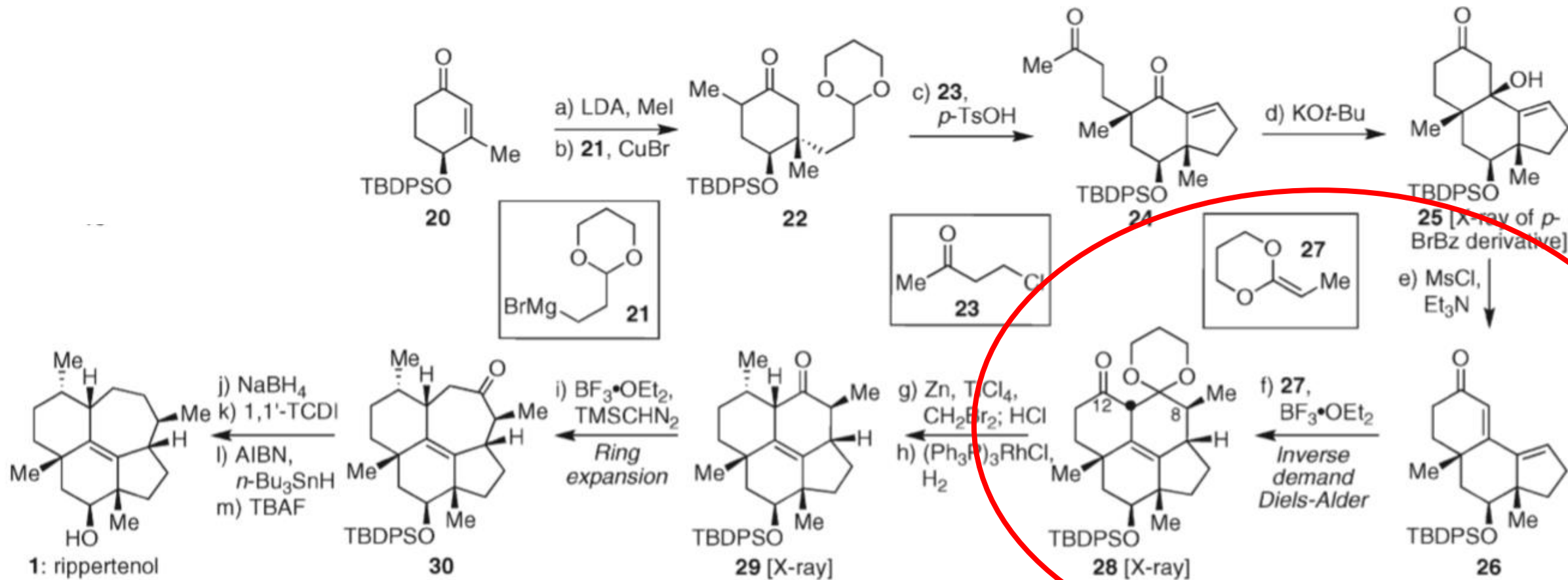
Aldolisation en milieu basique

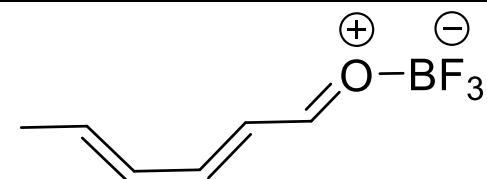
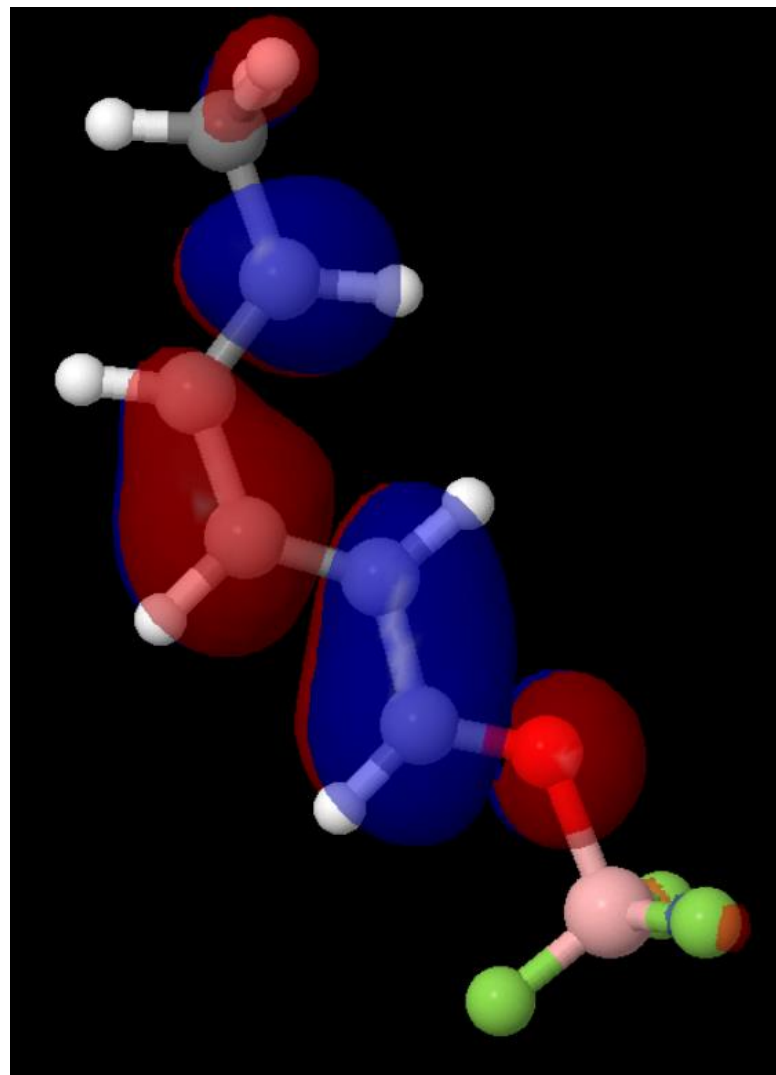
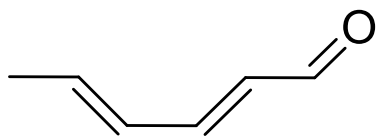
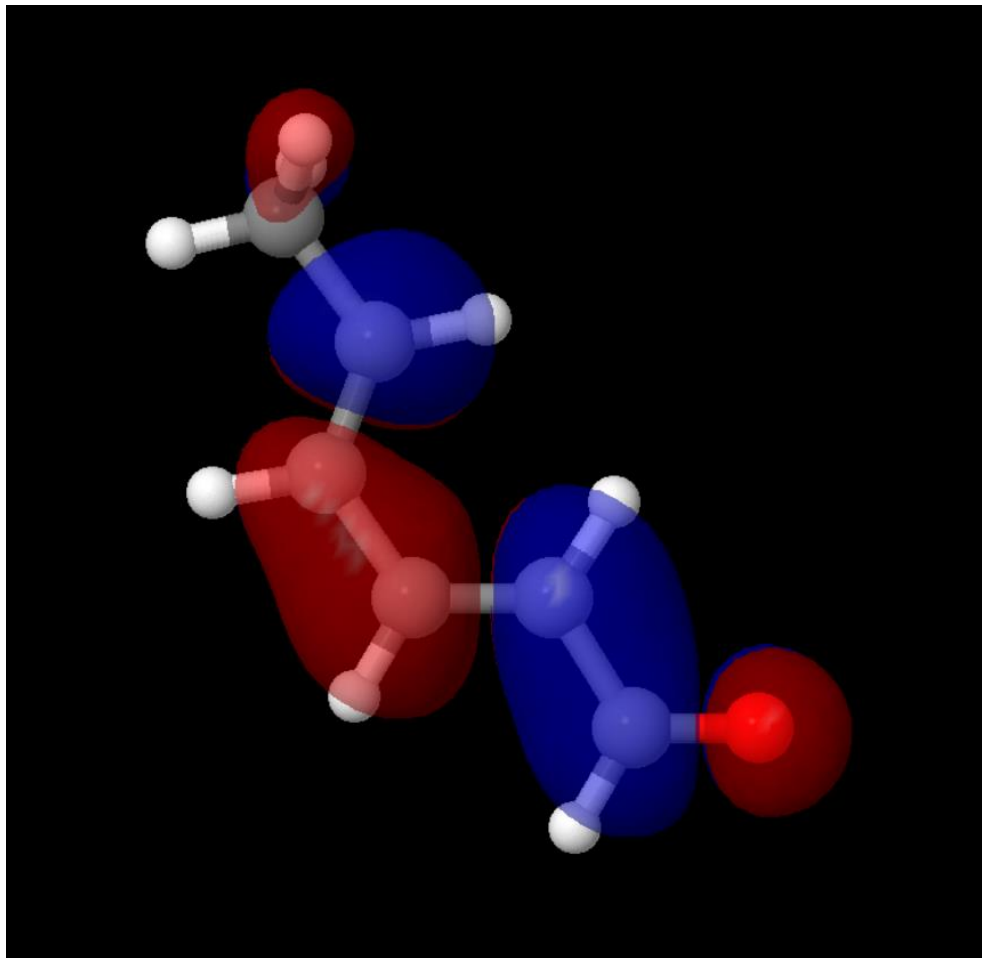


Chemin inenvisageable

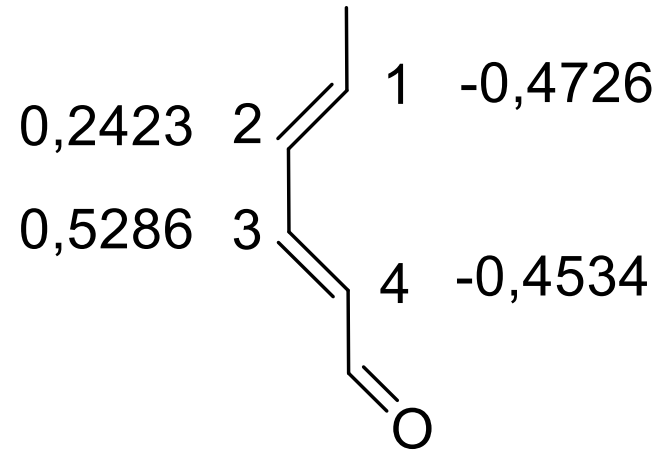


Réaction de Diels-Alder:

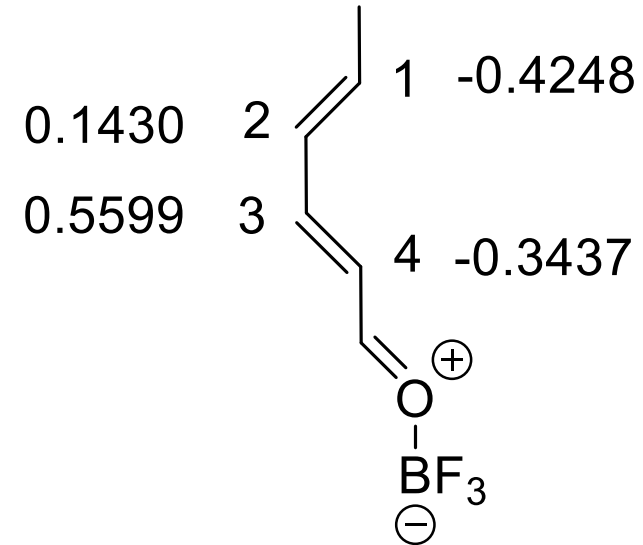




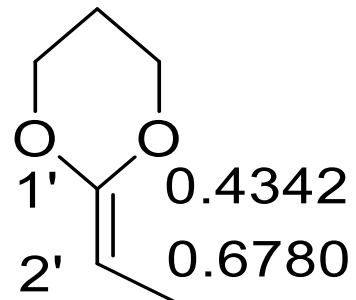
Coefficient BV Diène



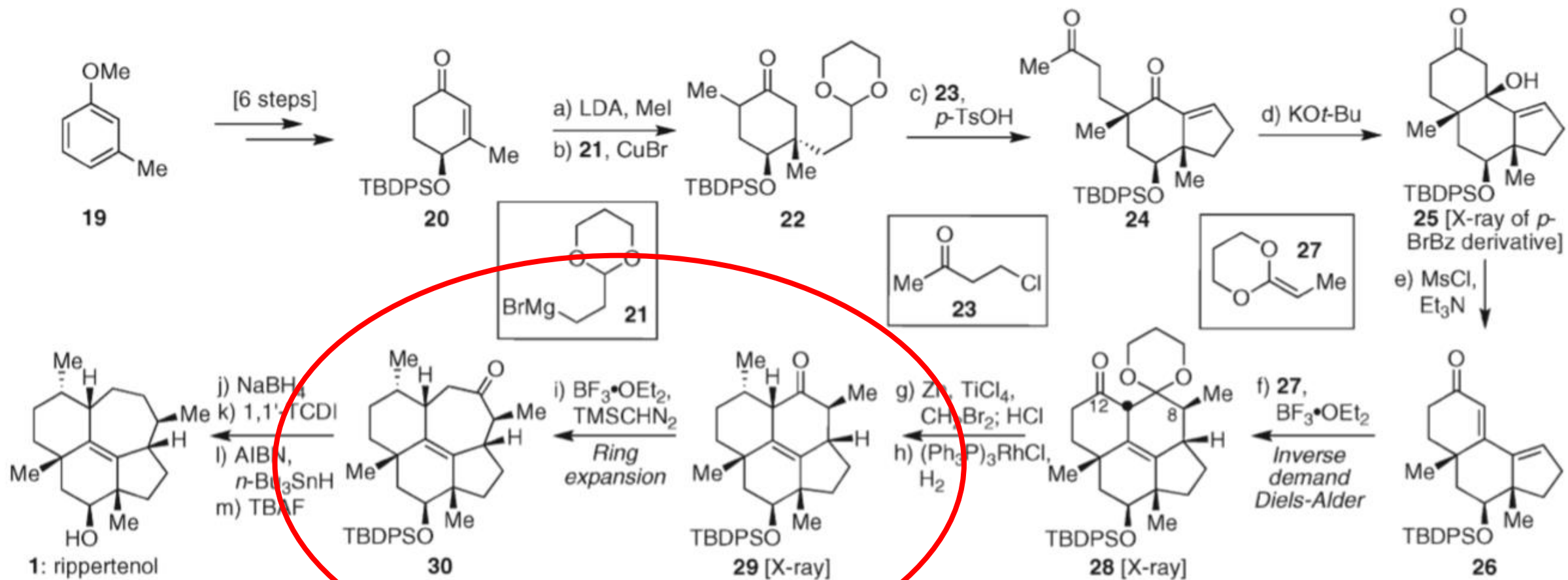
Coefficient BV Diène activé



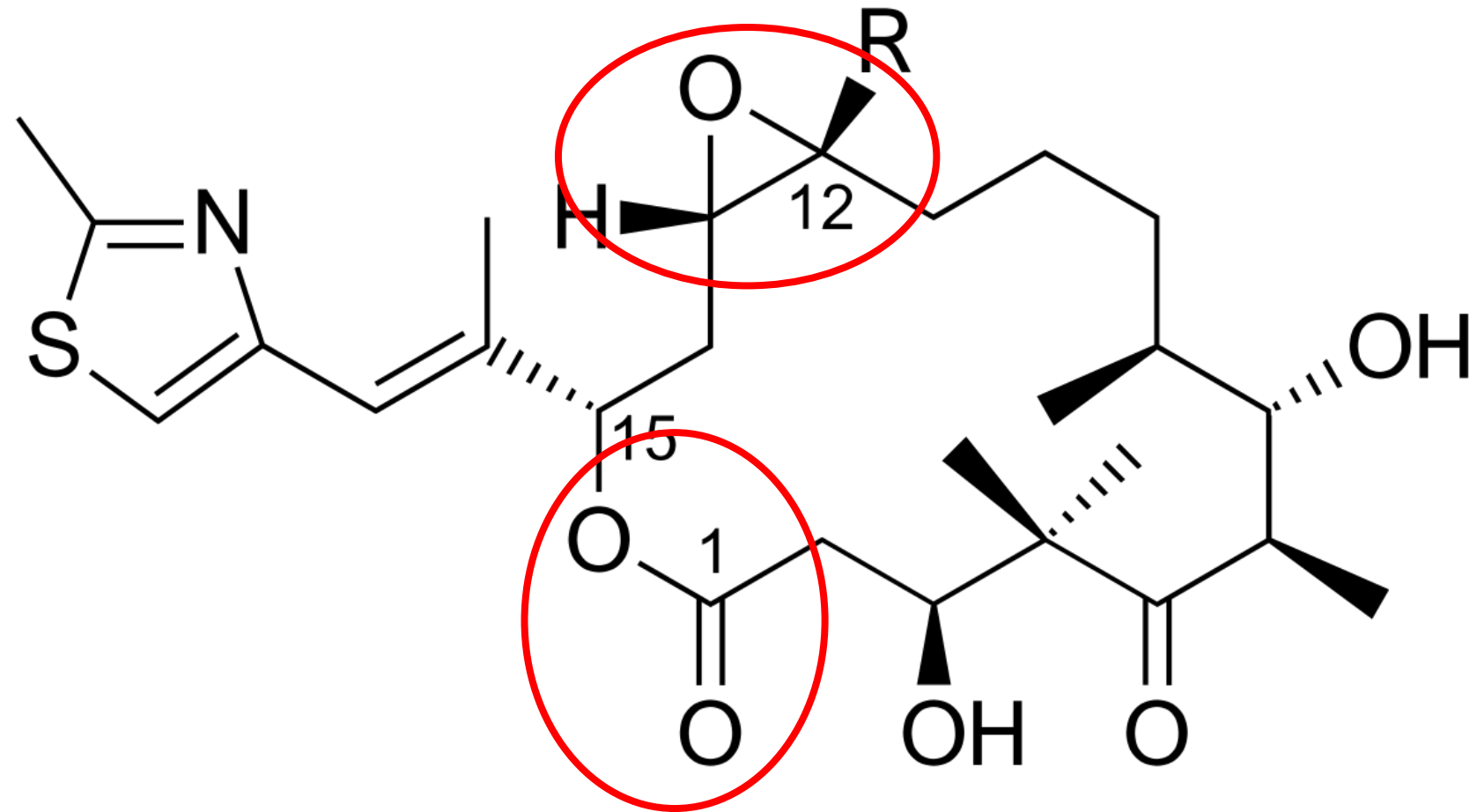
Coefficient HO Dienophile

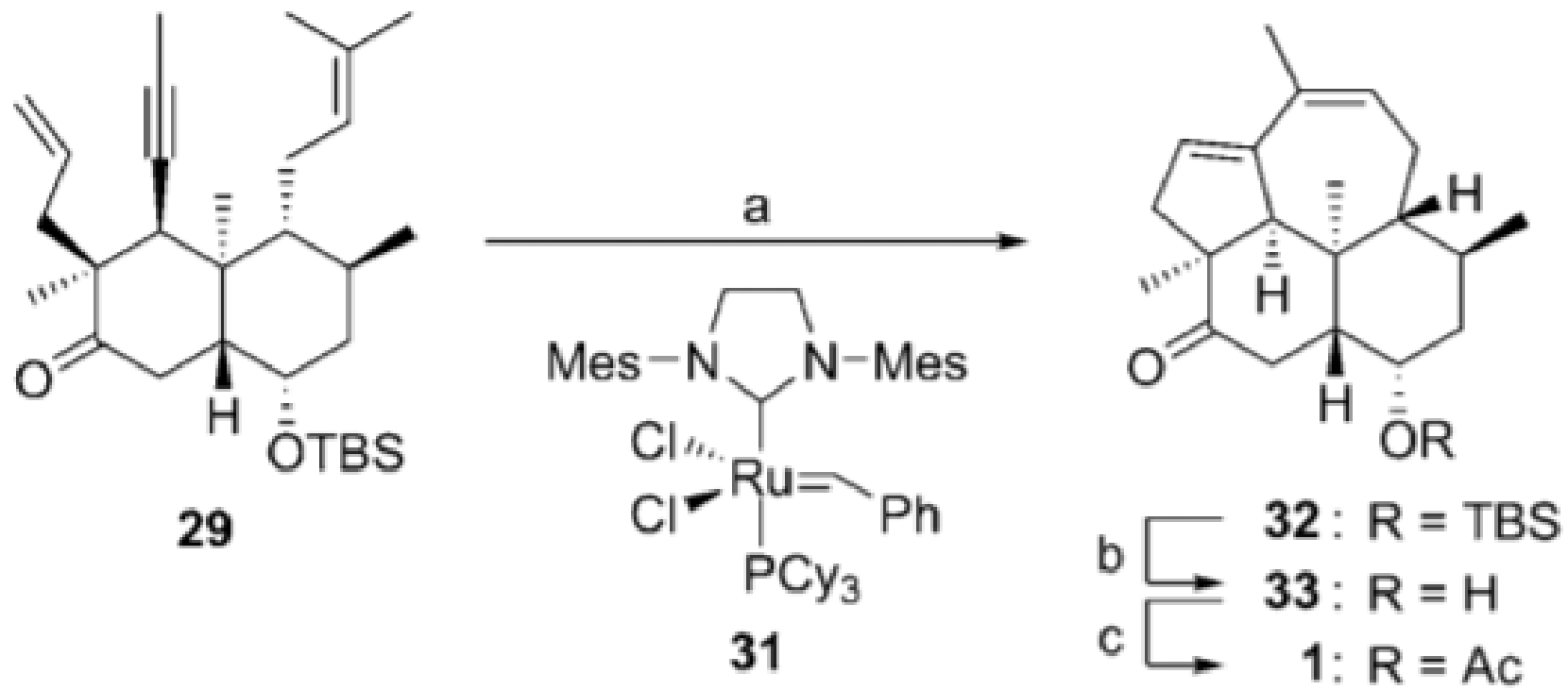


Conclusion



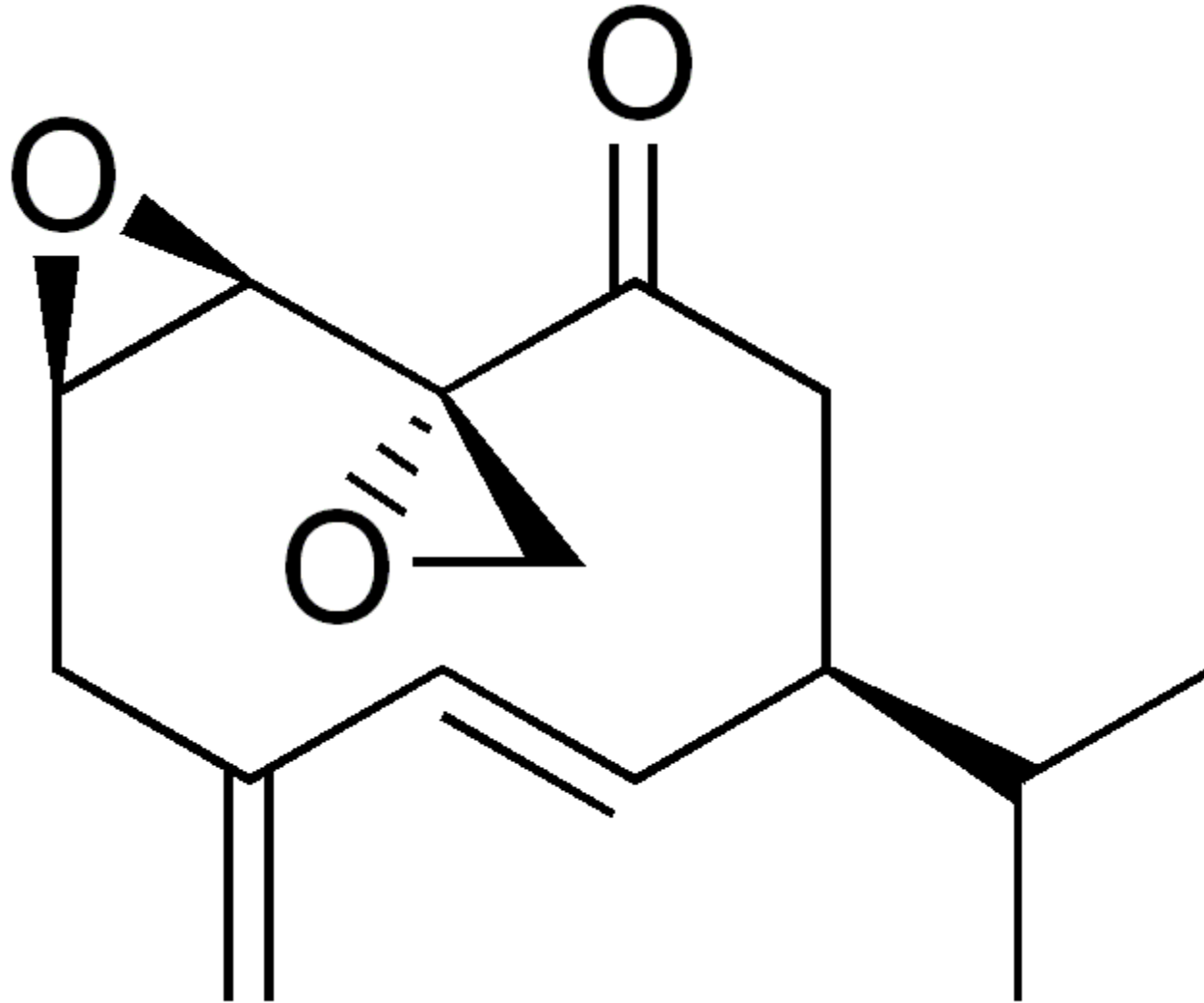
Prochain cours: Epothilone A



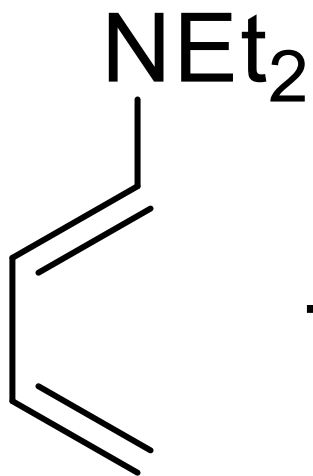


Angew. Chem. Int. Ed. 2011, 50, 2954–2956

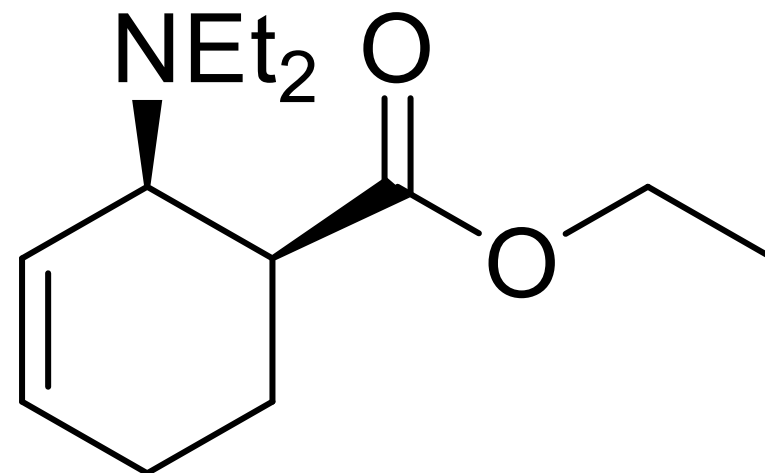
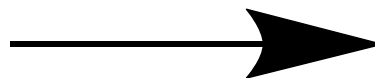
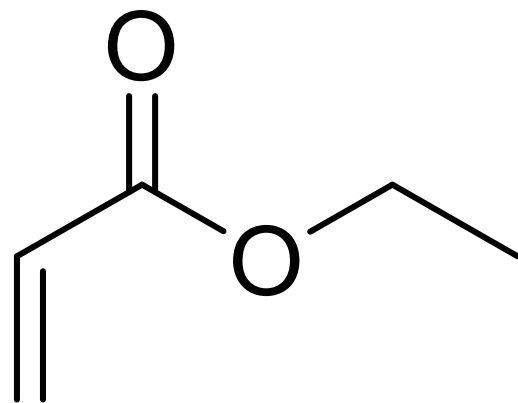
Périplanone B



Acrylic acid ethyl ester



+



N,N-diethylbuta-1,3-dien-1-amine

Tension de cycle

Nombre de carbones	Energie de tension de cycle en (kcal/mol)
3	27,5
4	26,3
5	6,2
6	0,1
7	6,2
8	9,7
9	12,6