

LP: Phénomènes de polarisation **optique**

EI: Lunettes 3D

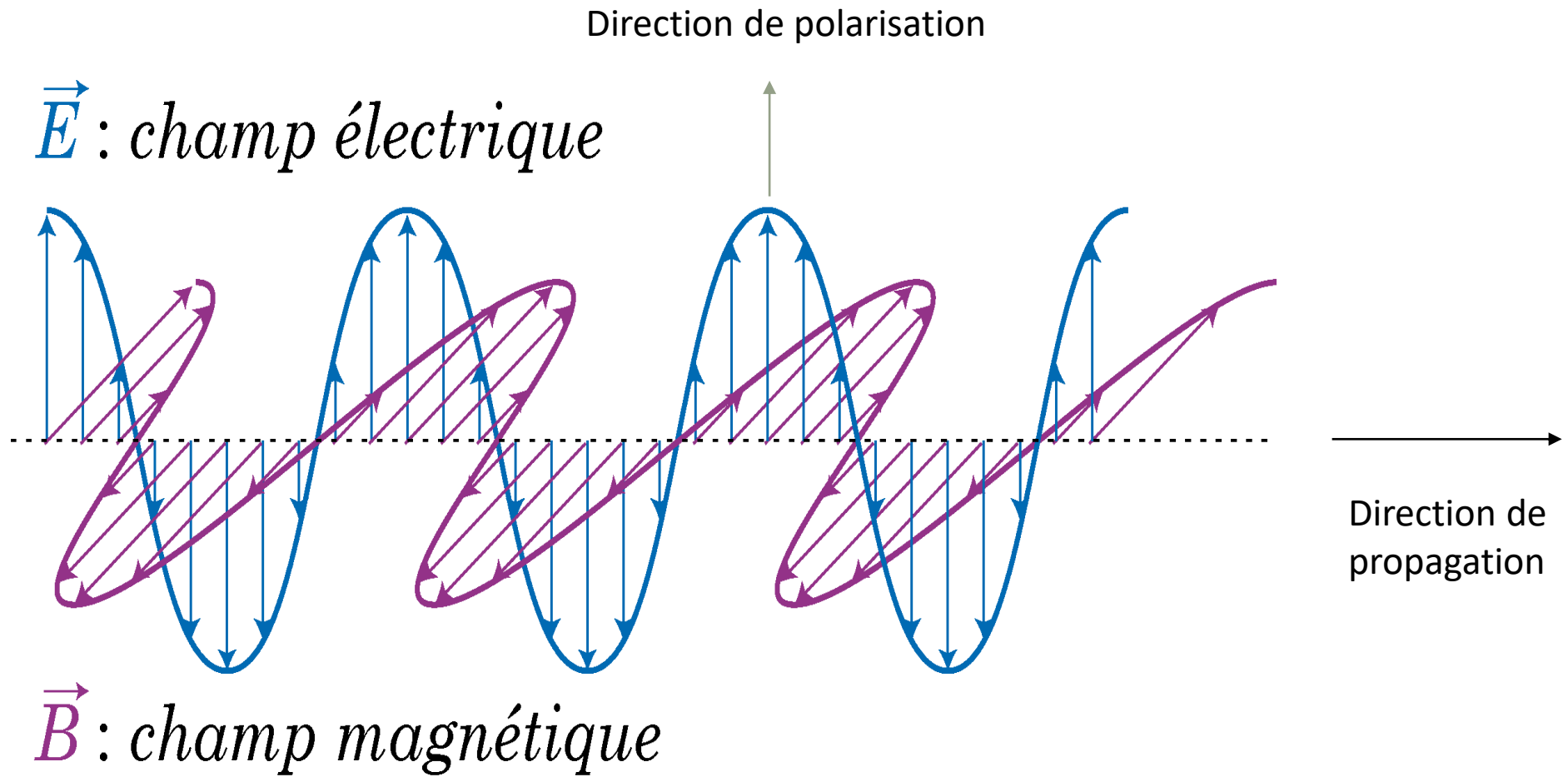
Gaëtan Gaston



AVEC

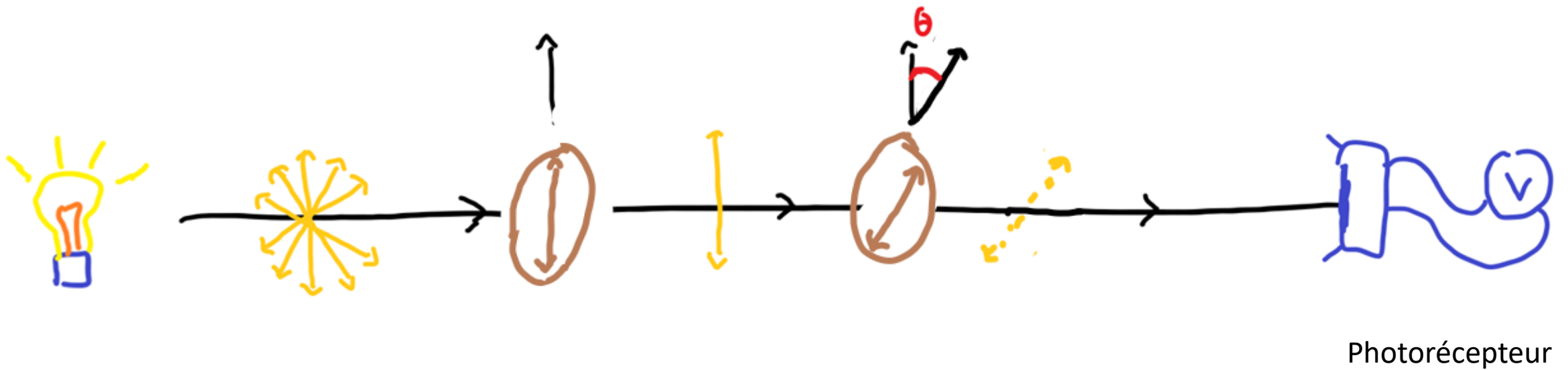


SANS

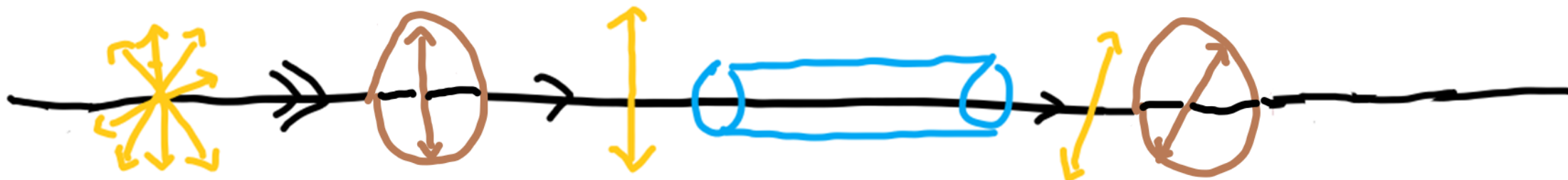
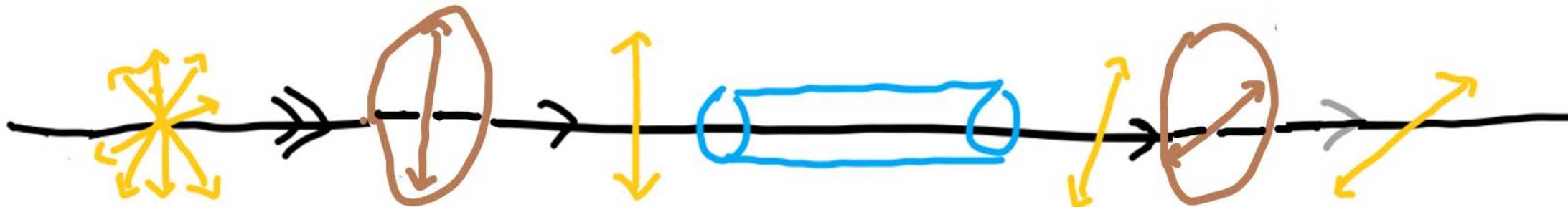
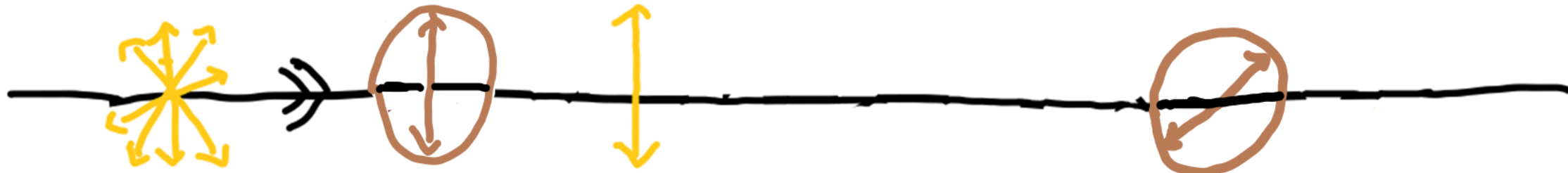


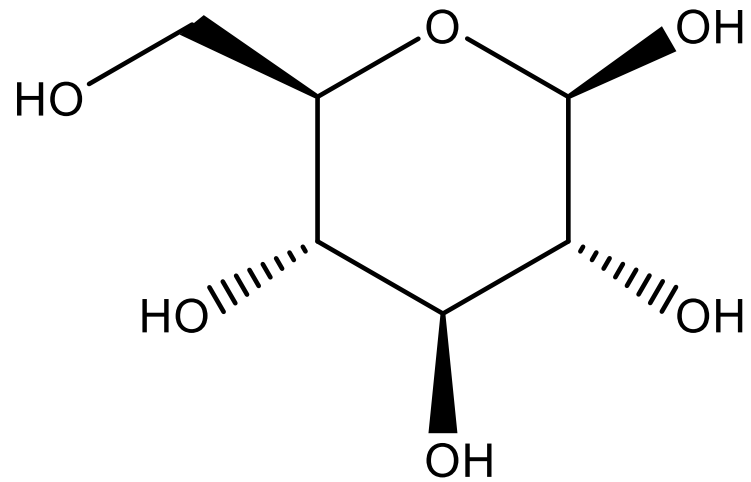
Schématisation du champ électromagnétique

Loi de Malus: dispositif



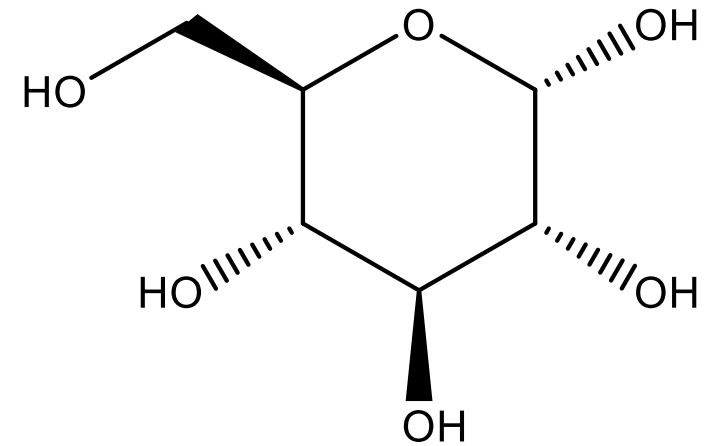
Loi de Biot





β -glucose

$$[\alpha](\beta, 25^\circ\text{C}, \text{D, eau}) = 112 \text{ }^\circ\text{L.e. g}^{-1}.\text{dm}^{-1}$$



α -glucose

$$[\alpha](\alpha, 25^\circ\text{C}, \text{D, eau}) = 112 \text{ }^\circ\text{L.e. g}^{-1}.\text{dm}^{-1}$$

$$\begin{aligned} d &= 1 \text{ dm} \\ c &= 1 \text{ g} \cdot \text{L}^{-1} \end{aligned}$$



<https://picoprojecteur.top/>

Conclusion

