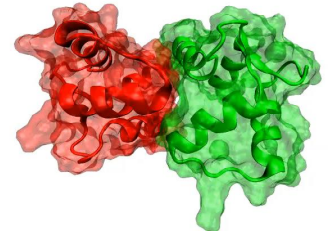
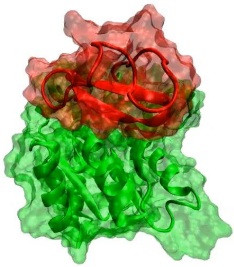


Sample-based Representations and Algorithms for Modeling Protein Structure and Dynamics

Modeling Intrinsically-Dynamic Proteins in the Presence of Constraints



Amarda Shehu

Computer Science, George Mason University
Fairfax, Virginia

<http://cs.gmu.edu/~ashehu>

amarda@gmu.edu

Research in my Laboratory: Computer Science \cap Molecular Biology



“The purpose of this paper is to discuss a possible mechanism by which the genes of a zygote may determine the anatomical structure of the resulting organism. The theory does not make any new hypotheses; it merely suggests that certain well-known physical laws are sufficient to account for many of the facts. The full understanding of the paper requires a good knowledge of mathematics, some biology, and some elementary chemistry.”

Turing, AM. (1952) Chemical basis of morphogenesis.
Philosophical Transactions of the Royal Society of London.
Series B, Biological Sciences 237(641):37-72.



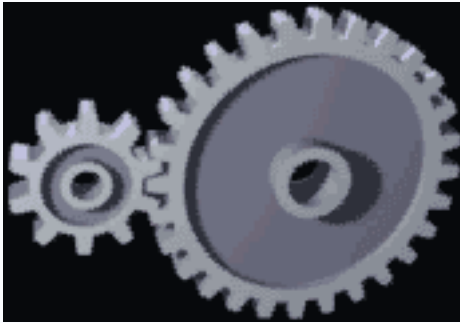
Sir Alan Turing identified one of the fundamental problems in science:
How do biological forms give rise to biological function?

An Overly Simplified but Useful View of Computational Structural Biology

What does the part look like?



How do the parts move?

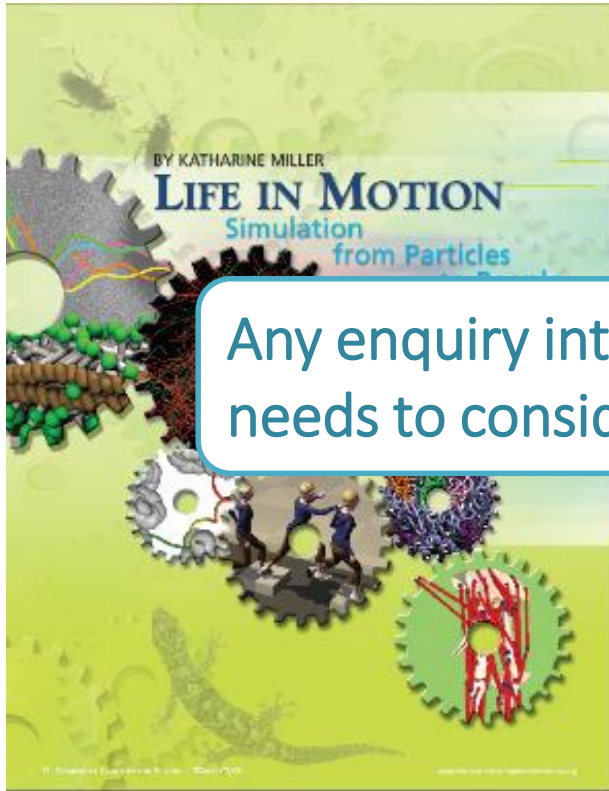


Mechanistic view is foundation of computational treatment for sequence-structure-dynamics-function relationship in macromolecules

How do the parts come together?



All Processes that Maintain and Replicate a Living Cell Involve Moving Biomolecules



Any enquiry into how form determines function needs to consider how matter changes form

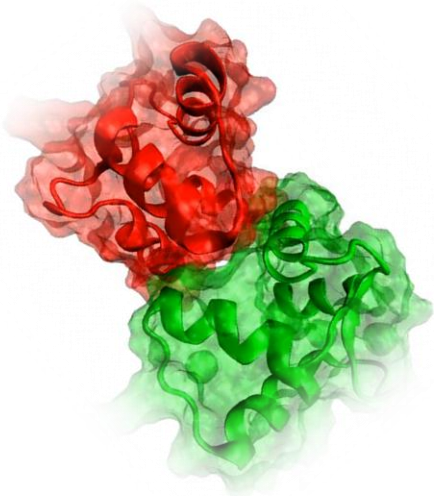
“At the most basic level, charged atoms push and pull on one another to control the inner workings of every living thing. Cellular machines called ribosomes use ratchets and springs to translate coded messages into the workhorses of the cell: proteins. And small movements made by these give developing tissues. These appendages, including humans, through the natural environment.”

“... a meta-community of scientists with a common interest in understanding how matter moves, and how that motion can be simulated in computers”

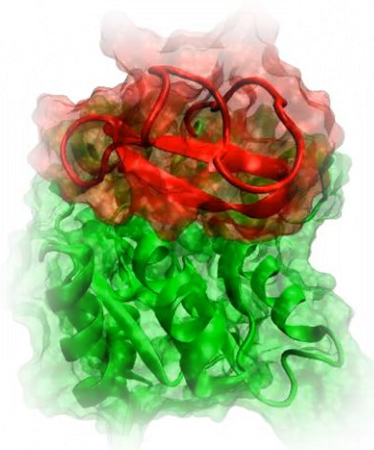
Altman, R. (2013) *Biomed Comput Review*.

Protein Conformational Switching Harnessed into Productive Events in Cell

Calmodulin

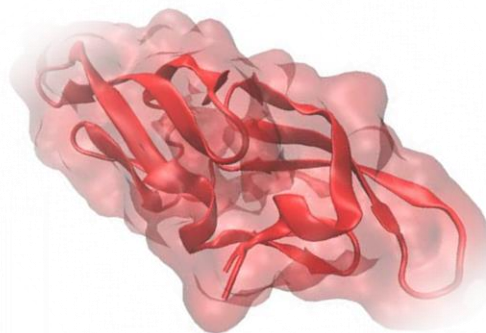


Adenylate Kinase



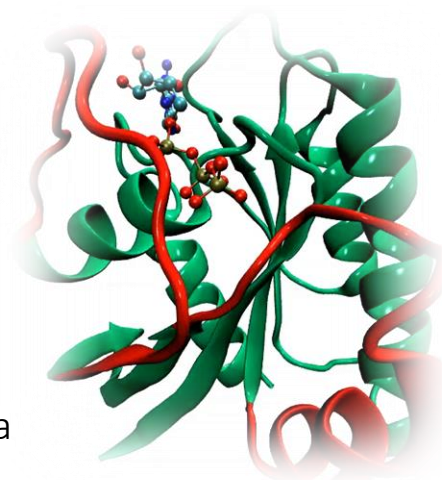
> 13Å open-closed motions
accommodating different binding partners
regulating cascade of signals in living cell

Cyanovirin-N



> 16Å motion
potent virucidal protein
against HIV-I and influenza

H-Ras



2.5Å on <- -> off switching
regulating cell growth

Of (Biomolecular) Forms and Transitions



- ❑ **Objective:** Understand the dynamic interplay across disparate spatio-temporal scales, link it to the atomic-scale physicochemical basis of dynamical behavior of single molecules and their interactions, and, ultimately, relate it to cellular function
- ❑ Protein structural transitions regulate allosteric signaling, catalysis, and more, and occur on 0.1-10Å length scales and ns-s timescales.
- ❑ **Challenge:** Currently, no wet- or dry-laboratory technique can bridge such disparate spatio-temporal scales

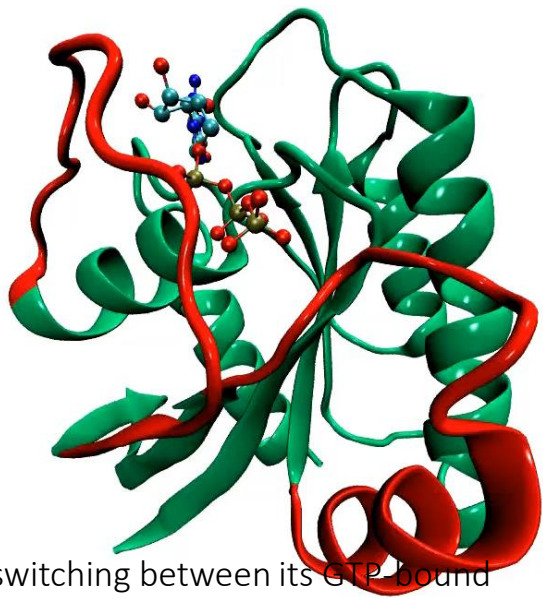
Sample-based, Discrete Models of Protein Structure and Dynamics

- ❑ Growing realization of algorithmic impasse
- ❑ Paradigm shift needed over hallmark Molecular Dynamics and Monte Carlo approaches
- ❑ **Premise:** Inspiration may come from a combination of biology and other science and engineering fields that model dynamic systems
- ❑ **Insight:** Discrete kinetic models to capture structural transitions with reasonable detail and computational budget

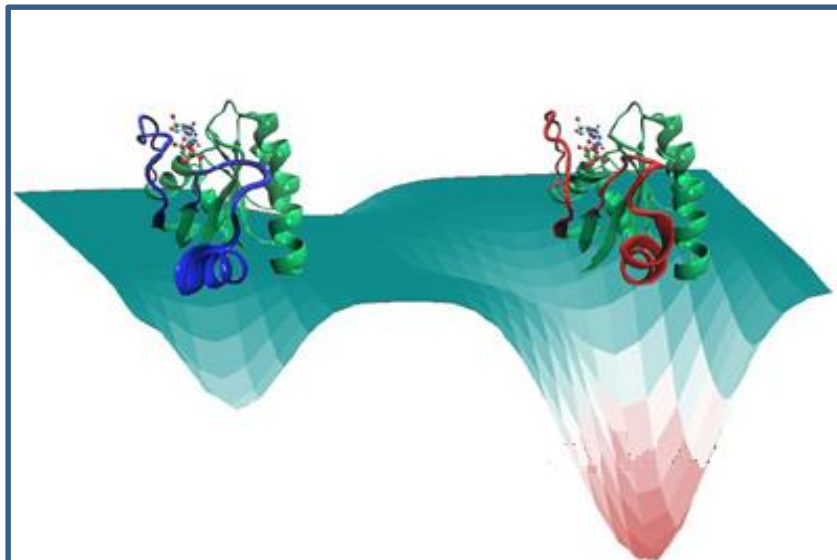
Shehu, Nussinov PLoS Comput Biol 2016
Maximova et al. PLoS Comput Biol 2016

Models of Structural Dynamics Leverage Energy Landscape View

- Energy landscape underscores inherent nature of biomolecules as dynamic systems interconverting between structures with varying energies.

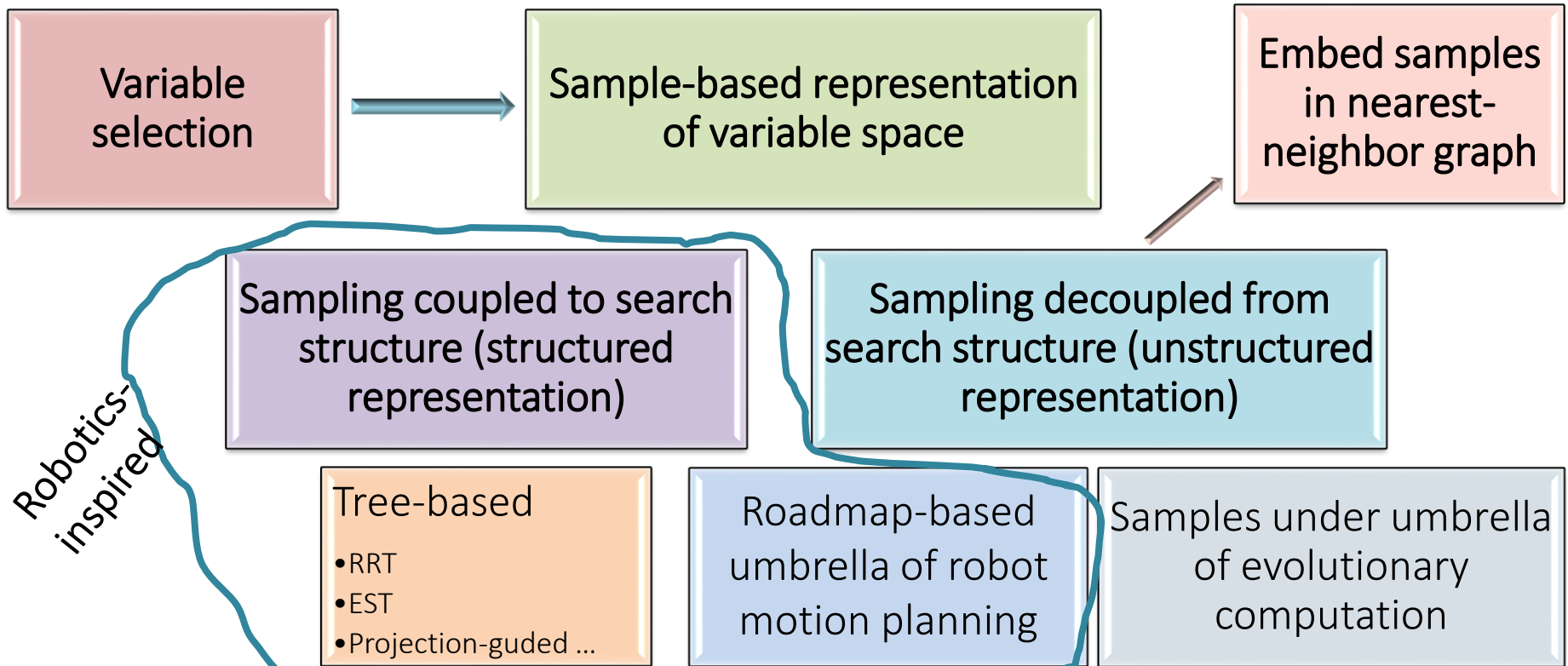


H-Ras switching between its GTP-bound (red) and GDP-bound (blue) structures



Schematic illustration of H-Ras structures on energy landscape

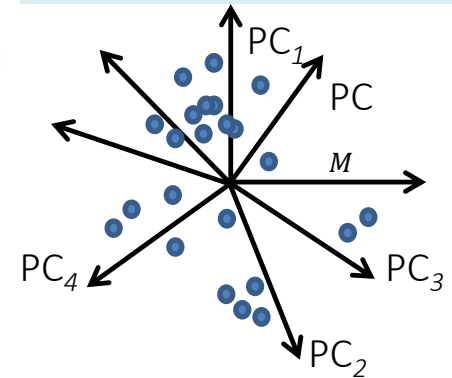
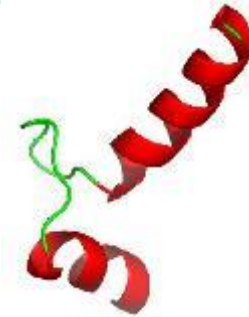
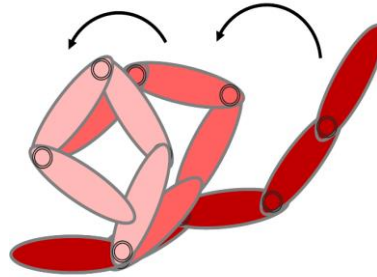
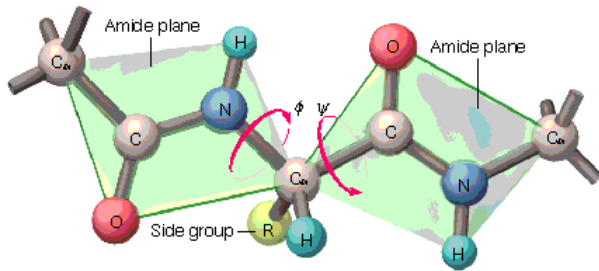
Roadmap of this Talk



Robot Motions and Protein Motions: Similar Systems, Similar Problems

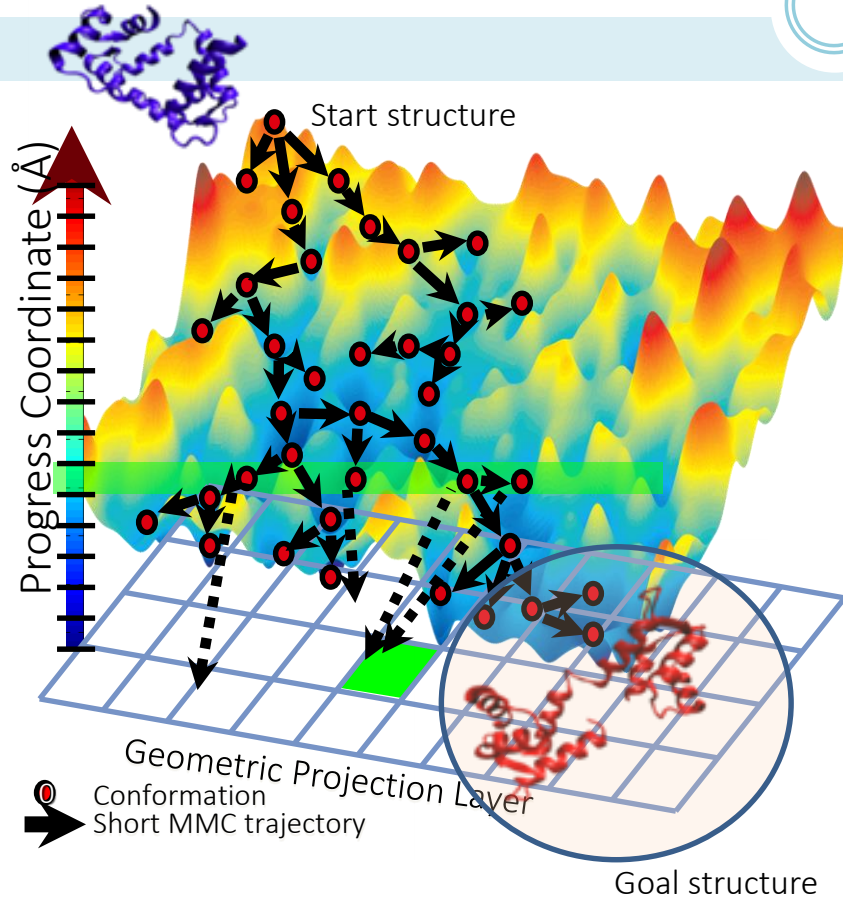
- ❑ **Insight:** Mechanistic treatment of an uncomplexed protein as a modular system composed of heterogeneous and highly-coupled building blocks
- ❑ Tree-based approach: samples obtained as part of growing tree in variable space
 - ❑ Can answer only single start→goal query
- ❑ Roadmap-based approach: samples obtained first and then embedded in a nearest-neighbor graph (roadmap)
 - ❑ Can potentially answer many queries, provided high exploration capability

Selecting Few Variables to Capture Couplings



- ❑ Dihedral angles as variables of interest for fast kinematics (Latombe, Amato, Kavraki, Cortes, Haspel, Thomas, Tapia, Shehu, and other labs)
- ❑ Bundles of consecutive angles to reduce number of variables and design effective variation operators via fragment replacement (Shehu)
- ❑ Rigidity and other structure analysis to reduce number of dihedral angles or prioritize which ones modified most (Thomas, Tapia, Amato, and Haspel)
- ❑ Collective variables via Normal Mode Analysis (Cortes) and Principal Component Analysis (Shehu)

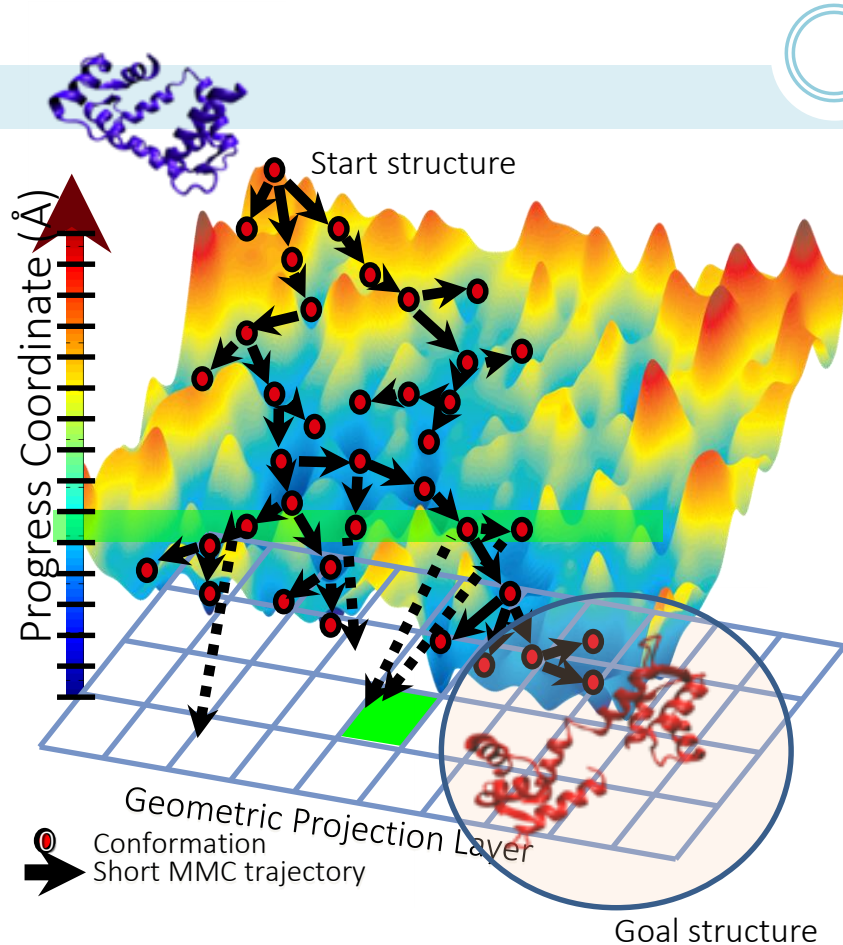
Projection-guided Tree-based Approach



- Objective: Reach goal from start

- Key idea: Tree, rooted at start grows in iterations until region near goal reached
 - @ iteration, (parent) vertex selected and subjected to variation operator to obtain new (child) vertex
 - Use of discretization layer to bias growth of tree

Projection-guided Tree-based Approach



Discretization/Projection layers:

1d grid over energies to bias tree away from high-energy samples

1d grid over progress coordinate to bias tree towards goal

3d grid over shape-based features to bias tree away from already-populated regions of variable space

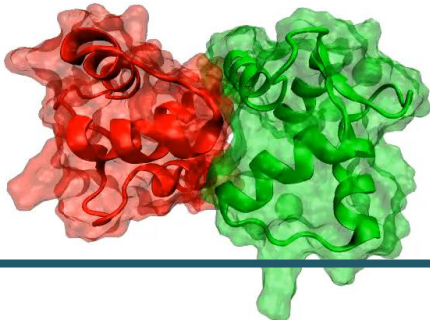
Molloy, Shehu. *IEEE/ACM Trans Comput Biol and Bioinf* 2013

Molloy, Shehu. *BMC Struct Biol* 2013

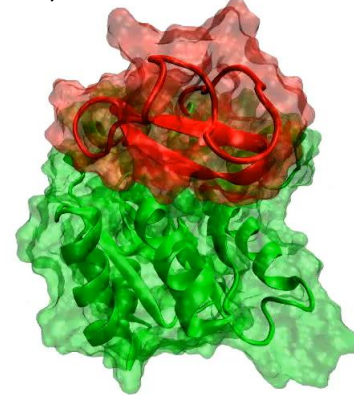
Representative Results



Sampled motion from closed to calcium-binding state of CaM: $13\text{\AA} \rightarrow < 1\text{\AA}$



Sampled motion from closed to open state of AdK: $7\text{\AA} \rightarrow < 2.7\text{\AA}$



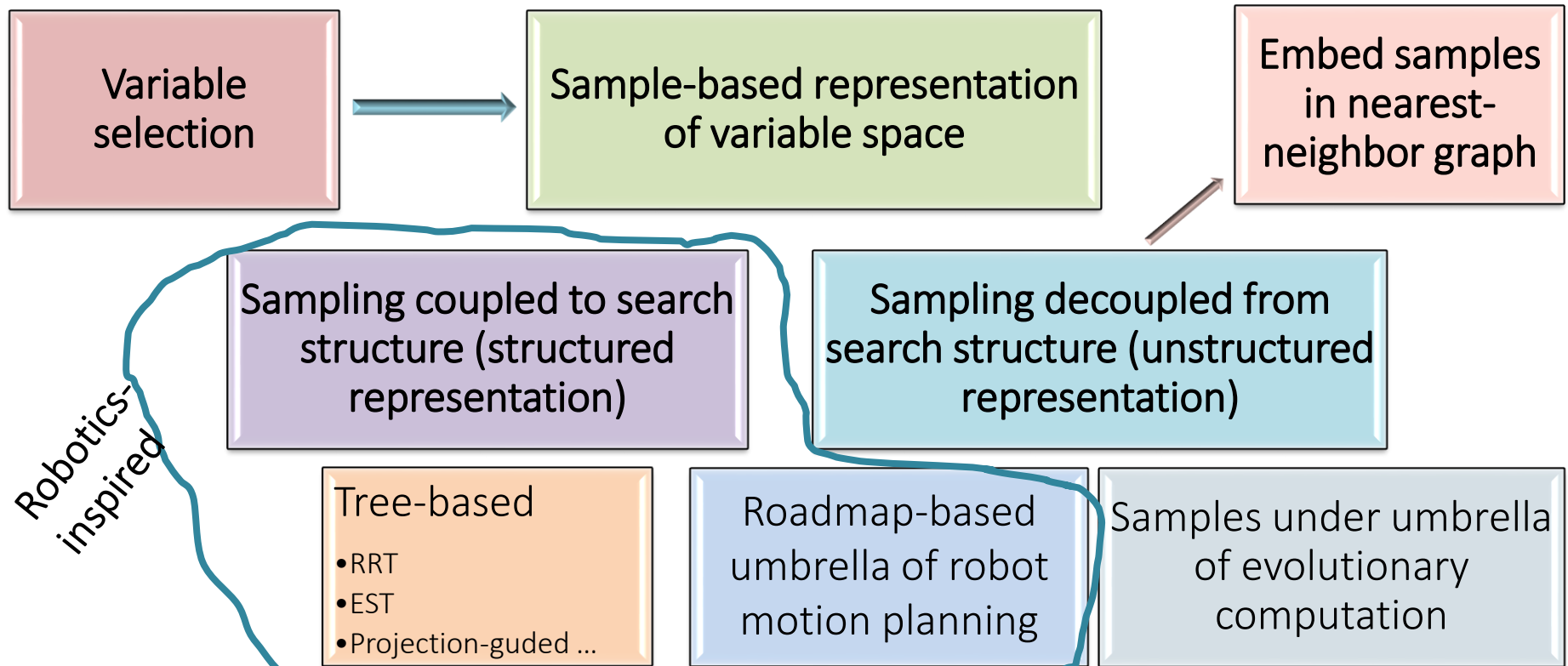
Intermediate AdK state captured!

Adk Motion IRMSD to 2rh5 (\AA)

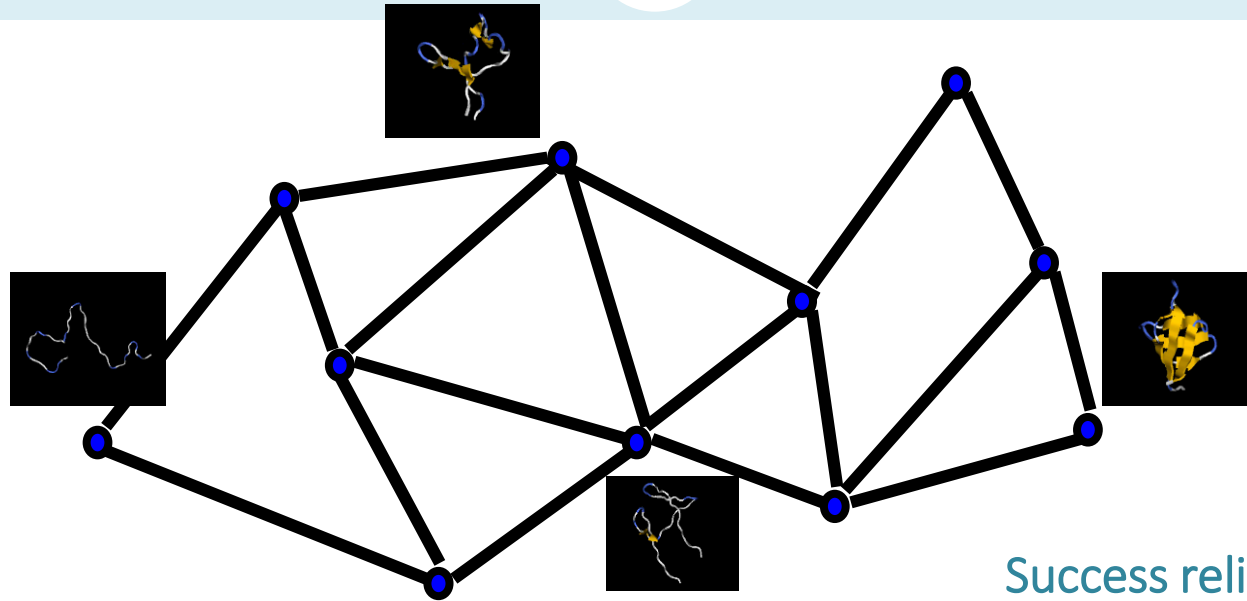
Closed -> Open	3.62
Open -> Closed	1.97

Molloy, Shehu. *BMC Struct Biol* 2013

Discrete (Kinetic) Models of Connectivity: Roadmap



Roadmap-based Approach



- ❑ Samples embedded in nearest-neighbor graph
- ❑ Roadmap = compact discrete connectivity model
- ❑ Efficient, trivial algorithms for extracting optimal paths

Success relies on
whether samples capture
relevant variable space

Structure-guided Roadmap-based Approach

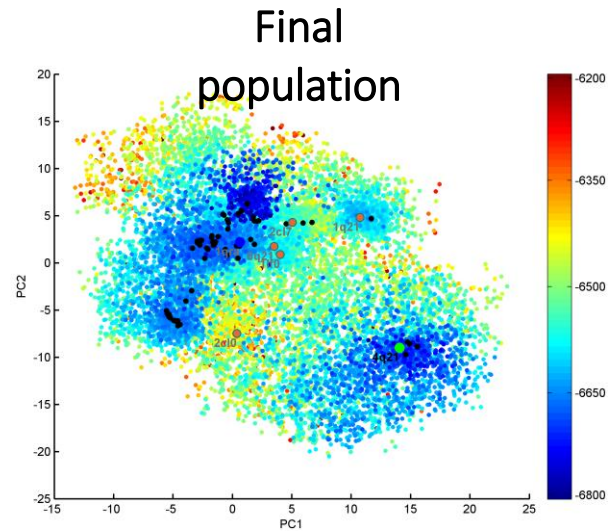
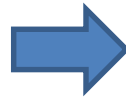
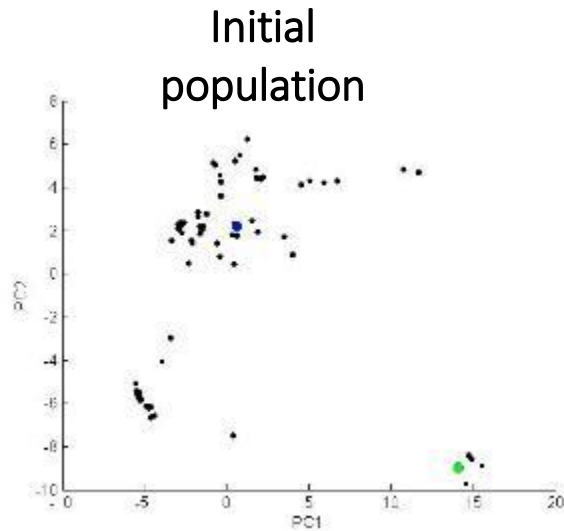


- ❑ *Initial population of samples: use as many experimentally-available structures of the same protein as available*
 - ❑ Grow population of samples, in selection-variation process
 - ❑ Employ menu of variation operators over different variables
-
- ❑ *Use experimentally-available structures to additionally extract collective variables*
 - ❑ Expand focus to lowest-cost path and tours to investigate specific hypotheses regarding role of particular structures as on-path intermediates in conformational switching events of interest

Molloy, Shehu. BICoB 2014.
Molloy, Shehu. ISBRA 2015.
Molloy, Shehu. IEEE Trans
NanoBioScience 2016.

Maximova et al. IEEE BIBM 2015.
Maximova et al. IEEE/ACM Trans
Comput Biol and Bioinf 2016.

Leveraging Experimental Structures to Define Underlying Space of Collective Variables

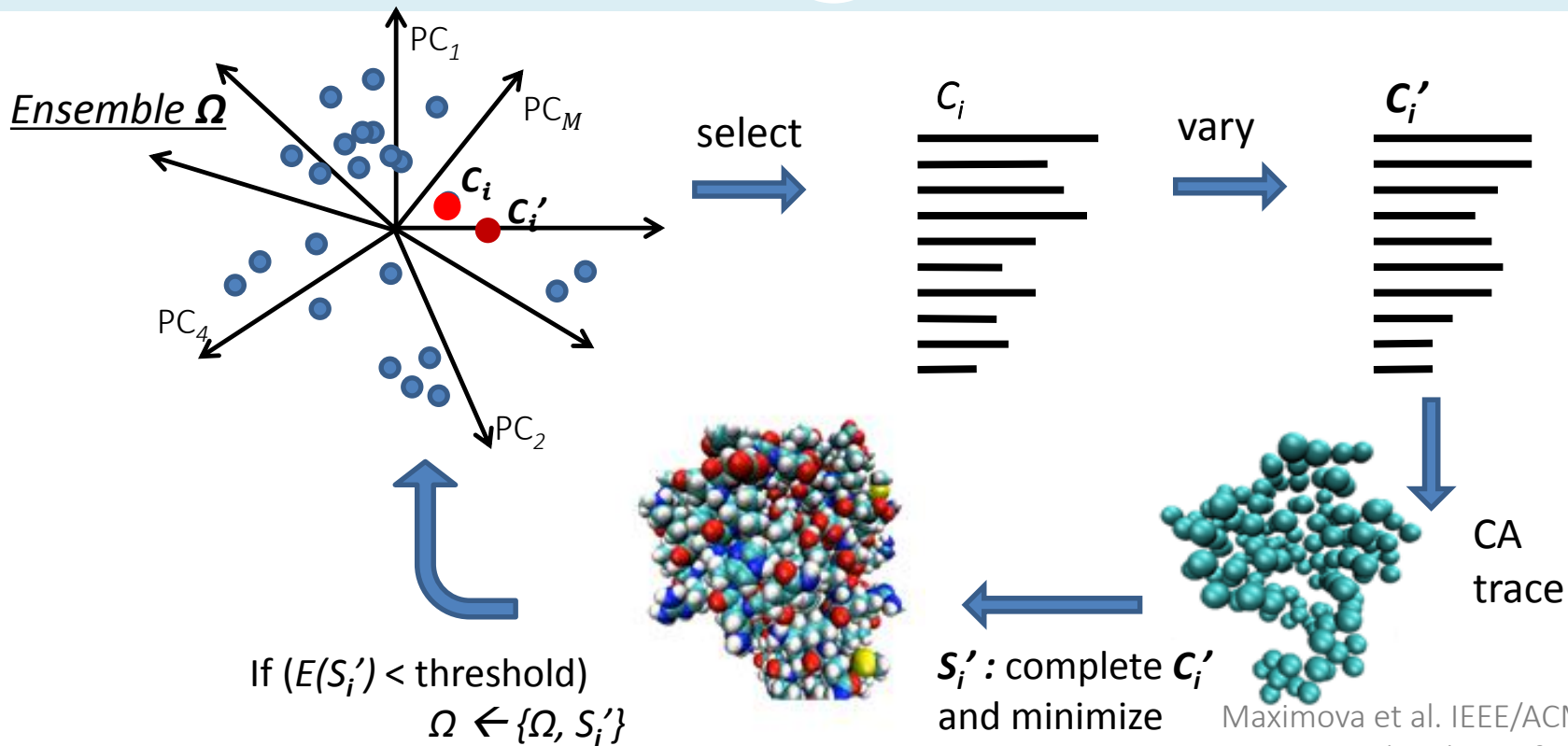


C_{start} and C_{goal} , plus an ensemble of relevant experimental structures projected on PC1, PC2.

Samples in the conformational space of a given protein, projected on PC1, PC2.

Maximova et al. IEEE/ACM Trans Comput Biol and Bioinf 2016.

Sampling of Variable Space



Maximova et al. IEEE/ACM Trans Comput Biol and Bioinf 2016.

Biased Selection

Ensemble Ω mapped onto grid of top two PCs

Two-level selection:

- pick some cell γ from grid G --- $w(\gamma)$
- pick some conformation c from cell γ --- $w(c)$.

$$w(\gamma) = \frac{e^{-\min E(\gamma) \cdot \alpha}}{(nrCnfs(\gamma) \cdot nrSel(\gamma) \cdot nrFailures(\gamma))^2}$$

$$w(c) = \frac{e^{-E(c) \cdot \alpha}}{(nrSel(c) \cdot nrFailures(c))^2}$$

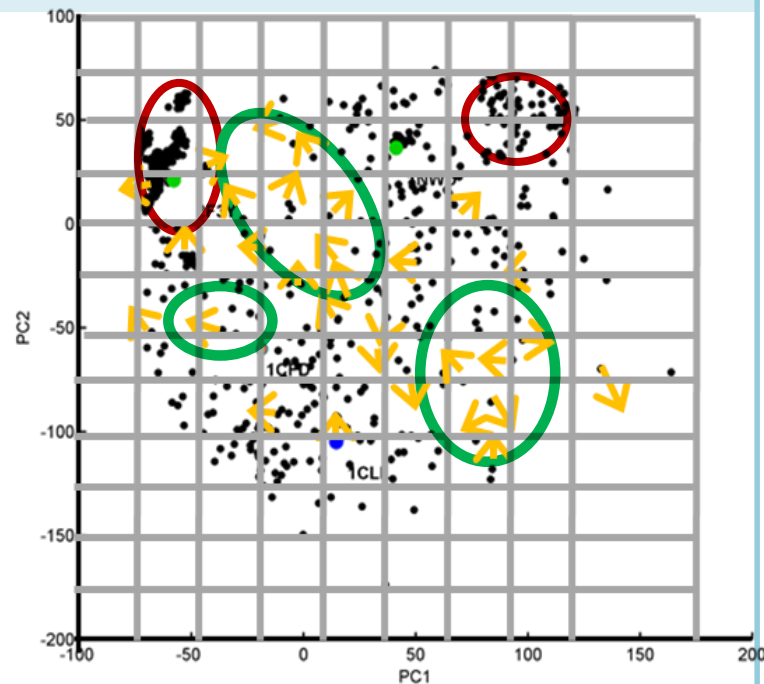
minE - minimum potential energy sample in γ

nrCnfs - number of samples in γ

nrSel - number of times γ has been selected

nrFailures - tries that failed to generate a new sample

Weighting functions inspired by related work (Shehu, Olson IJRR 2010, Molloy, Shehu BMC Struct. Biol 2013, Le-Plaku IROS 2014, Plaku TRO 2015)



PC1-PC2 projections of 697 experimental CaM structures

Variation Operator



T' is obtained from some sample T as in:

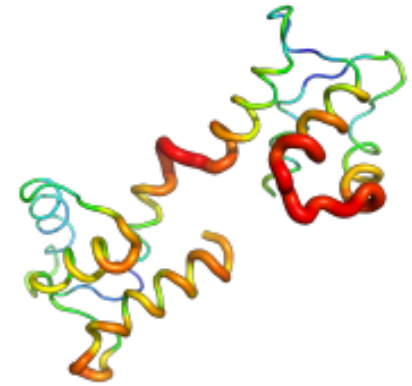
$$T' = T + \sum_{i=1}^M d_i \cdot PC_i$$

$T' = T + d$
 $d = \langle d_1 \dots d_M \rangle$ - displacements along each of PCs

Displacements d are proportionate to the variance captured by each PC

$d_1 \in [-\delta, \delta]$, δ – user-defined *maximum size of perturbation*

$\frac{d_i}{d_1} = \frac{\lambda_i}{\lambda_1}$, where λ_i is eigenvalue of PC_i



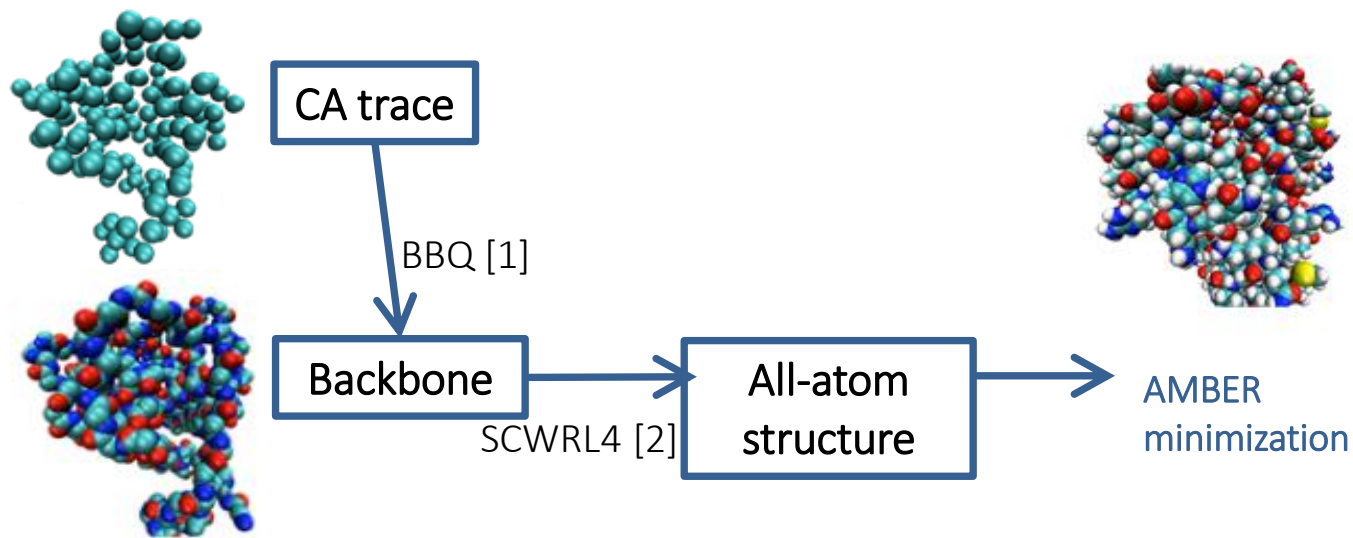
Displacement along PC_1 for CaM

Preservations of relative variances inspired by prior work in Shehu lab and others in robot motion planning (Li, Yanbo, and Kostas E. Bekris., *ICRA, IEEE*, 2010).

Maximova et al. *IEEE/ACM Trans Comput Biol and Bioinf* 2016.

Multiscale Improvement Operator: From Variable Space to Structure Space

From variable instantiations/samples to CA-traces to all-atom structures in local minima

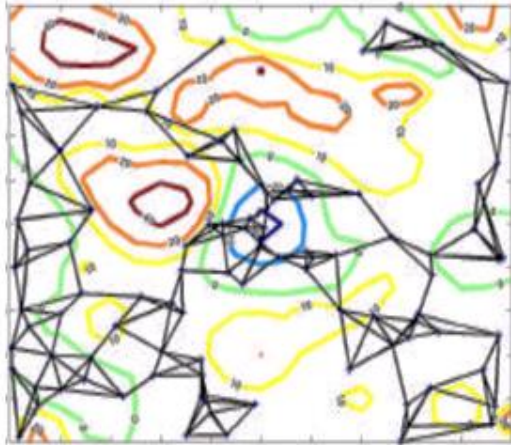


Result: computed ensemble of structures is a discrete, sample-based representation of AMBER *ff14SB* energy surface

[1] Gront et al. *J Comput Chem* 2007

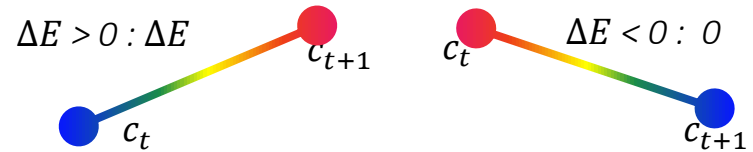
[2] Krivov et al. *Proteins: Struct Funct Bioinf* 2009

Nearest-neighbor Graph Querying

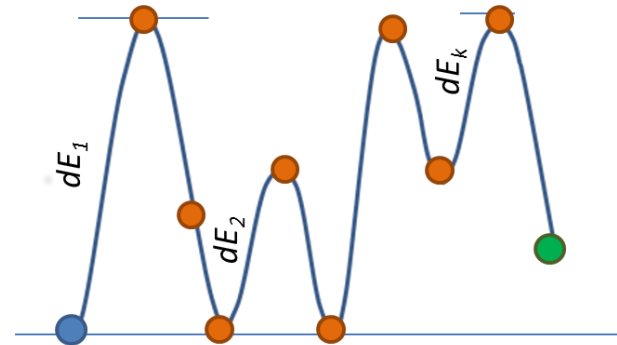


- ❑ Each $C \in \Omega$ is connected to at most k of its nearest neighbors
- ❑ Distance function: Euclidean distance in PC space
- ❑ **Additional criterion:** threshold on maximum distance between C and its neighbor

Minimum work: calculates only amount of extra energy (uphill moves) needed for the transition to occur



$$\text{Minimum Work Cost} = \sum \Delta E_k$$



Representative Results: Roadmap-based Study of CaM

CaM is used as Ca^{2+} sensor by protein kinase, involved in a process that regulate RAS signaling – subject of intensive cancer studies



**CaM bound to
calcium ions
(PDB ID 1CLL)**



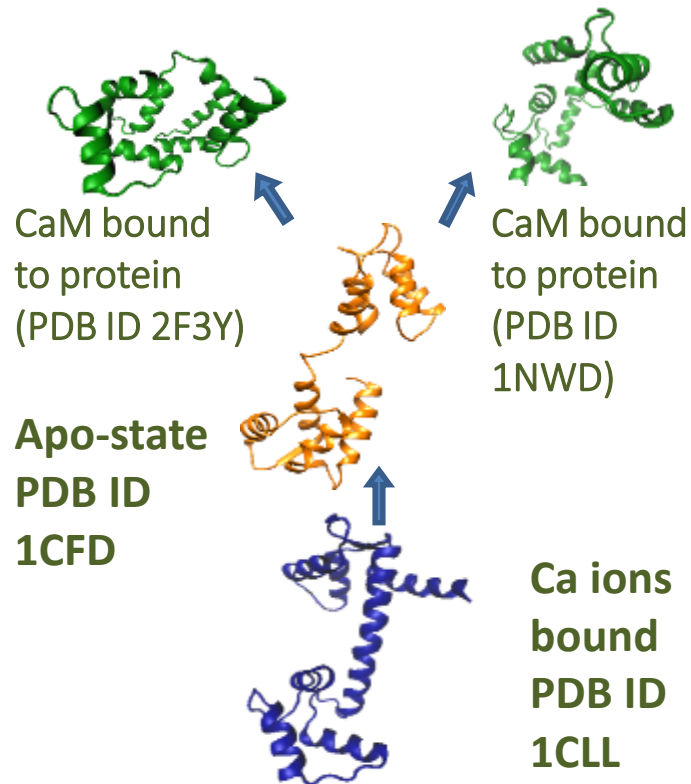
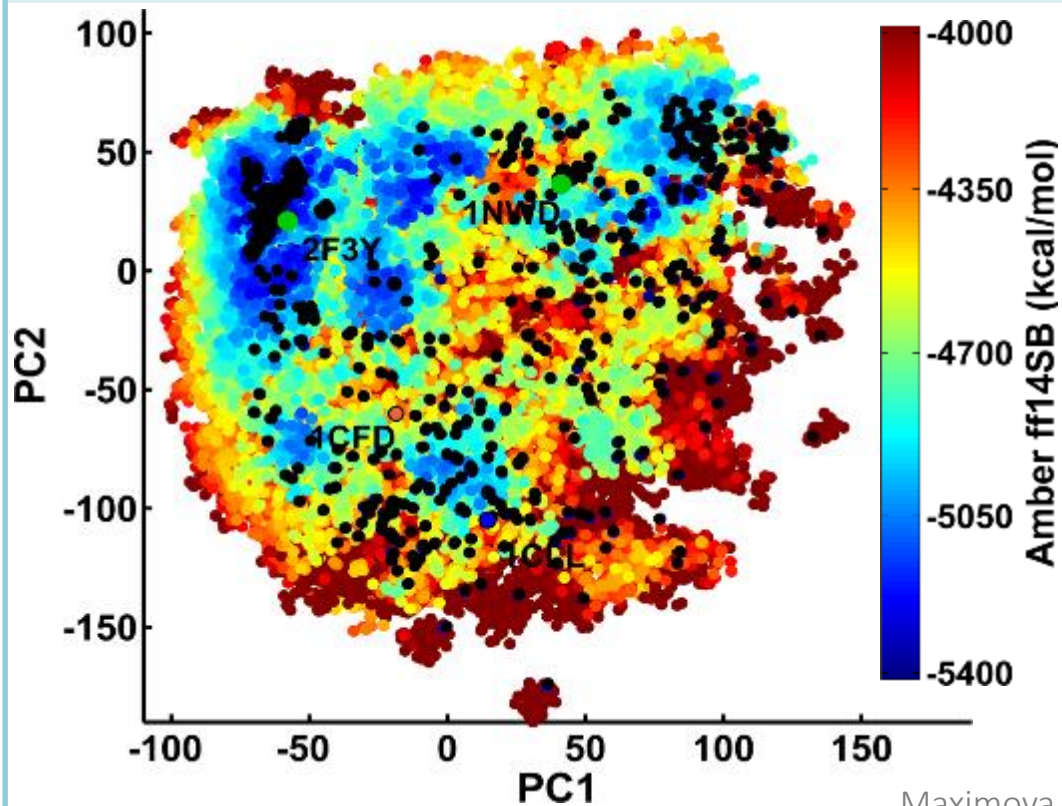
**Apo-state
(PDB ID 2KOE)**



**CaM bound to proteins
and peptides
(PDB ID 1NWD)**

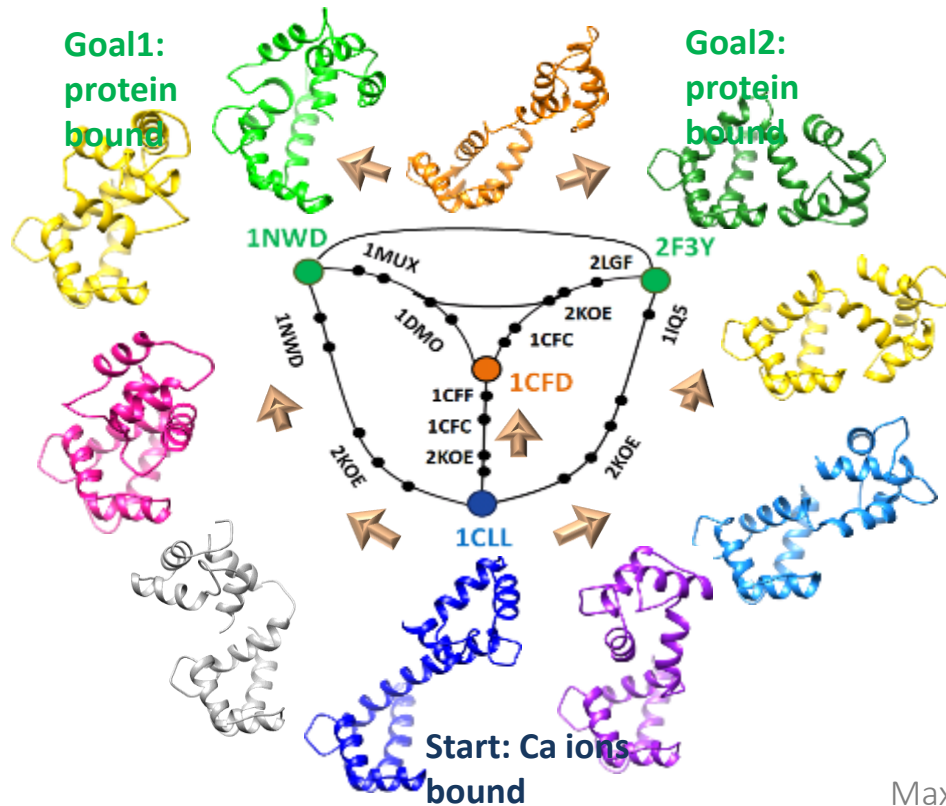
CaM degradation in Alzheimer's; disruption of calcium signaling main cause of neuronal dysfunction

Mapping Energy Landscape of CaM



Maximova et al. IEEE/ACM Trans Comput Biol and Bioinf 2016.

Modeling Transition Routes in CaM



- Lowest-cost path compared to lowest-cost tours going through specific apo-states as candidates for intermediates (PDB ids 2KOE, 1DMO)
- Paths reconcile findings: wet-lab findings that suggest transitions from Ca-bound to protein-bound states depend on the target-binding protein; in-silico work by Dobson and colleagues that suggests transitions follow a general, common functioning scenario

Maximova et al. IEEE/ACM Trans Comput Biol and Bioinf 2016.

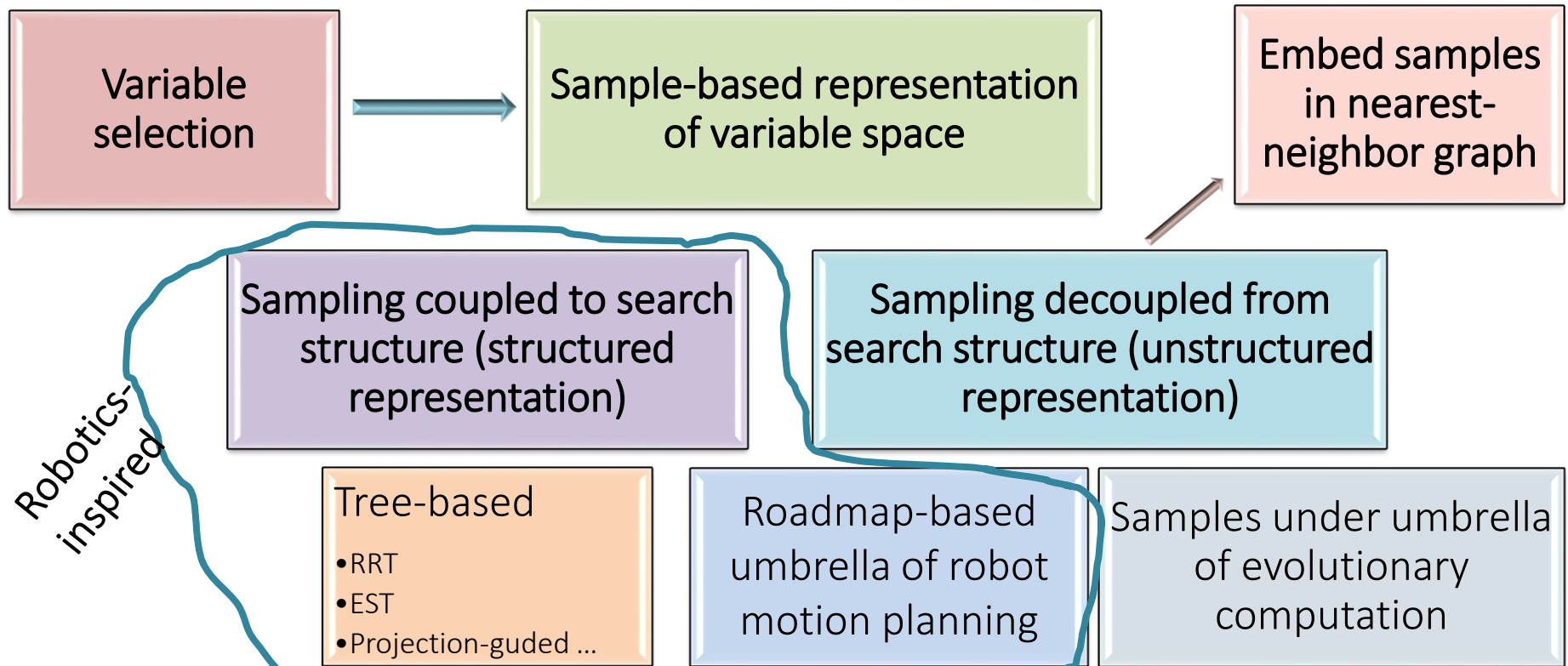
Sampling via Evolutionary Algorithms



❑ Challenges:

- ❑ Exploration limited by what can be maintained in memory
- ❑ Selection operator increasingly less effective if all samples maintained in memory
- ❑ What if some samples are left off to die?
 - ❑ Inspiration: natural selection
 - ❑ Population of samples evolves over generations
 - ❑ Only current population in memory + archive of hall of famers
- ❑ Evolutionary Computation: rich algorithmic toolbox with long history of investigating exploration versus exploitation trade-off

Discrete (Kinetic) Models of Connectivity: Roadmap



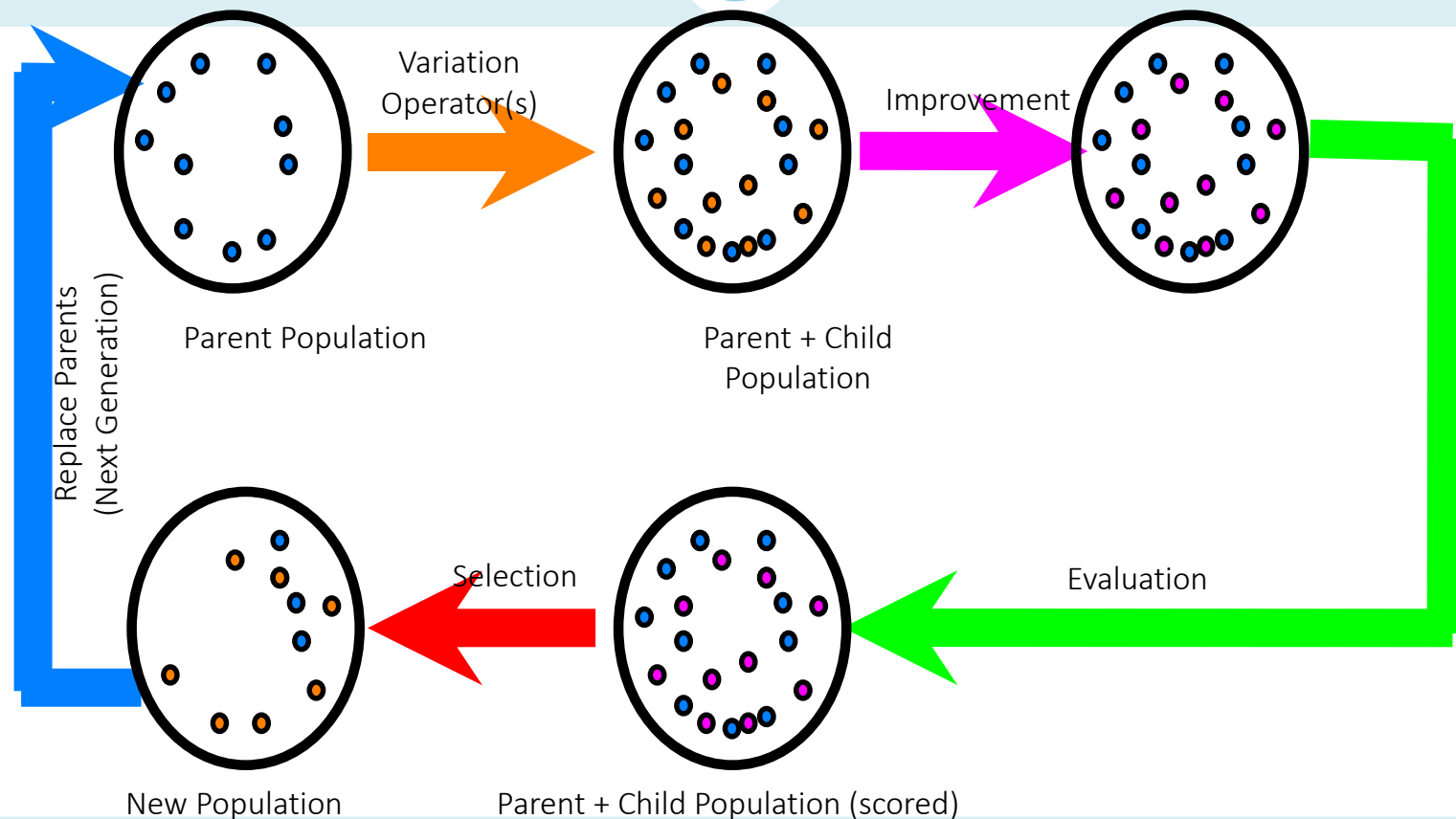
Nearest-neighbor Embedding of EA-obtained Map of Multi-basin Protein Energy Landscape

Algorithm 1 Building and querying a multi-dimensional map of the energy landscape

Input: α // Target protein sequence
 \mathcal{S}_{PDB} // PDB-obtained wet-laboratory structures of α and variants
 $S_{\text{start}}, S_{\text{goal}}$ // start and goal structures for desired excursion

- 1: $\text{Traces} \leftarrow \mathcal{S}_{\text{PDB}}|_{\alpha, \text{CA}}$ // CA traces of PDB structures “threaded” onto sequence α
 - 2: $\{PC_1, \dots, PC_m\} \leftarrow \text{Traces}$ // extract PCA variables
 - 3: $\text{Map} \leftarrow \text{EA}(\alpha, \text{Traces}, \{PC_1, \dots, PC_m\})$ // EA-built map of landscape of α
 - 4: $\text{NNGraph} \leftarrow \text{Map}$
 - 5: $\text{Paths} \leftarrow \text{Query}(\text{NNGraph}, S_{\text{start}}, S_{\text{goal}})$
- Output:** Map, Paths // output map and paths
-

Sampling via (Memetic) EAs Mapping Multi-basin Protein Energy Landscapes



Sampling via (Memetic) EAs Mapping Multi-basin Protein Energy Landscapes

Algorithm 2 Building multi-dimensional map of energy landscape

```
Input:  $\alpha$  //Target protein sequence
Traces //CA traces of PDB structures "threaded" onto sequence  $\alpha$ 
 $\{PC_1, \dots, PC_m\}$  //variable axes of search space for the EA

1: Map  $\leftarrow \emptyset$  //empty map of landscape of  $\alpha$ 

2:  $i \leftarrow 0$  //generation iterator
3:  $\text{Population}_i \leftarrow \text{Initialization}(\text{Traces}, \{PC_1, \dots, PC_m\})$  //initial population

4: while a fixed total budget of fitness evaluations not exhausted do
5:  $\text{Offspring} \leftarrow \emptyset$  //set of offspring
6: for  $p \in \text{Population}_i$  do
7:  $c \leftarrow \text{Variation}(p, \{PC_1, \dots, PC_m\})$  //each parent yields an offspring
8:  $\tilde{c} \leftarrow \text{Improvement}(c)$  //some fitness evaluations allocated to improve offspring

9: if  $\tilde{c}$  should be considered for addition to the map then
10: Map  $\leftarrow \text{UpdateMap}(\text{Map}, \tilde{c})$ 
11: else //restart lineage by replacing parent with a new individual
12:  $p \leftarrow$  new individual in variable space

13:  $\text{Offspring} \leftarrow \text{Offspring} \cup \{\tilde{c}\}$  //add to set of offspring

14:  $i \leftarrow i + 1$  //select population for next generation
15:  $\text{Population}_i \leftarrow \text{Selection}(\text{Population}_{i-1}, \text{Offspring})$  //offspring compete with parents

Output: Map //output constructed map
```

- Every parent subjected to variation operator
- Non-redundant, fitness-biased map via dynamically-updated hall of fame
- Novel improvement operator improves exploration-exploitation trade-off

Map of Landscape via Hall of Fame Mechanism



Algorithm 3 Update of the map

```
Input: Map //hall of fame  
       $c, f(c)$  //individual considered for inclusion and its Rosetta score12 fitness  
      fitThreshold, distThreshold //fitness and distance thresholds determining inclusion  
  
1: if  $f(c) \geq \text{fitThreshold}$  then //fails fitness test  
2:   RETURN  
3:  $c\_candidate\_for\_map \leftarrow 1$  //flag  
4: for all  $\langle C, f(C) \rangle$  in the current map do  
5:   if ManhattanDistance( $c, C$ ) < distThreshold then  
6:     if  $f(c) < f(C)$  then //c similar to C but fitter  
7:       Map  $\leftarrow$  Map  $\setminus$   $\{\langle C, f(C) \rangle\}$  //C removed from Map  
8:     else  
9:        $c\_candidate\_for\_map \leftarrow 0$   
10: if  $c\_candidate\_for\_map == 1$  then  
11:   Map  $\leftarrow$  Map  $\cup$   $\{\langle c, f(c) \rangle\}$ ; //c included in Map
```

Lineage- and Neighborhood-aware Improvement Operator

- ❑ **Insight:** Improvement operators implement exploitation and gobble up computational budget from exploration in an EA
- ❑ **Solution:** apportion budget by only spending improvement iterations on promising individuals

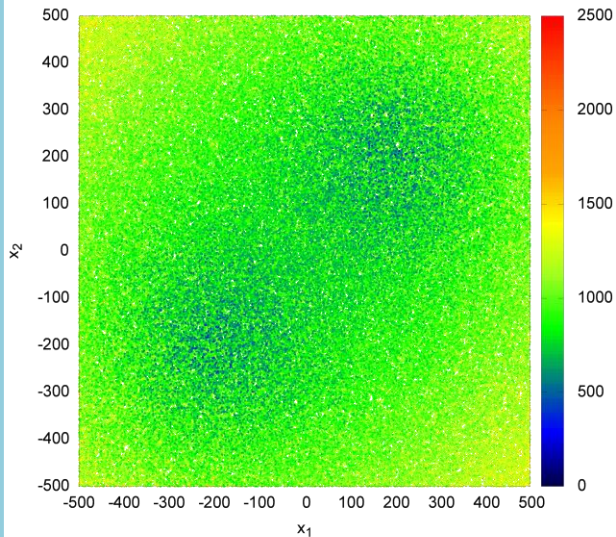
Algorithm 4 Lineage- and Neighborhood-aware Improvement Operator

```
1: if  $niters(c) == \text{NrImprovItersMax}$  then  
2:   RETURN NIL //lineage has spent budget  
3:  $c', f \leftarrow \text{LocImprovIter}(\text{ProteinSequence}, c, \langle \text{trace} \rangle, U_{[1:m]}, 1)$   
   //update lineage and make improved offspring aware  
4:  $niters(c') \leftarrow niters(c) + 1$   
5:  $fea(c') \leftarrow fea(c)$   
6:  $survives \leftarrow 0$   
7: if  $niters(c') == 1$  then //one iteration spent so far  
8:    $survives \leftarrow 1$   
9: else //compare to neighbors  
10:   $\mu_f \leftarrow$  average fitness over neighbors in hall of fame  
11:  if  $f < \frac{((5-niters(c')) \times fea(c') + \mu_f)}{(6-niters(c'))}$  then  
12:     $survives \leftarrow 1$   
13:  if  $niters(c) == \text{NrImprovItersMax}$  then //maximum now reached  
14:    if  $f < (0.9 \times \mu_f)$  then //but sufficiently fit  
15:       $survives \leftarrow 1$   
Output:  $\langle c', f, survives \rangle$ 
```

Improvement Operator in Exploration-Exploitation Trade-off

Product of two 5D spheres with multiplicative moderate noise uniformly at random in [0,1]

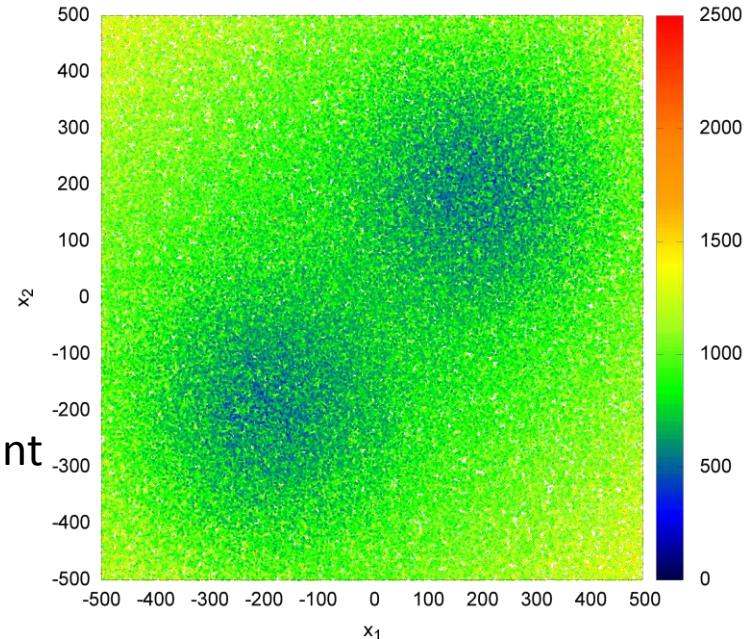
$$f(x) = \sqrt{\sum_1^5 (x_i - 200)^2} * \sqrt{\sum_1^5 (x_i + 200)^2} + \text{noise}(x)$$



Local improvement operator



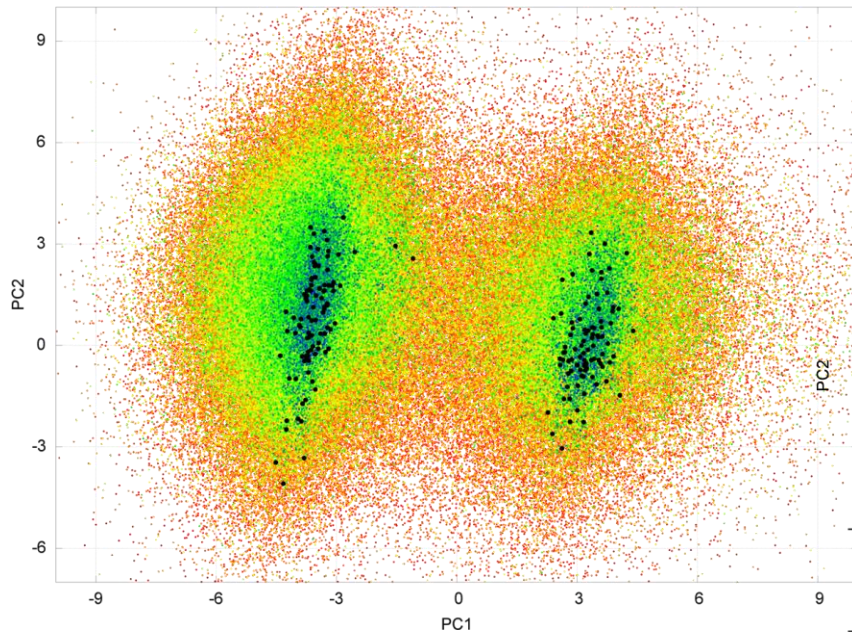
Aware improvement operator



Hall of fame projected onto first two coordinates and color-coded by fitness

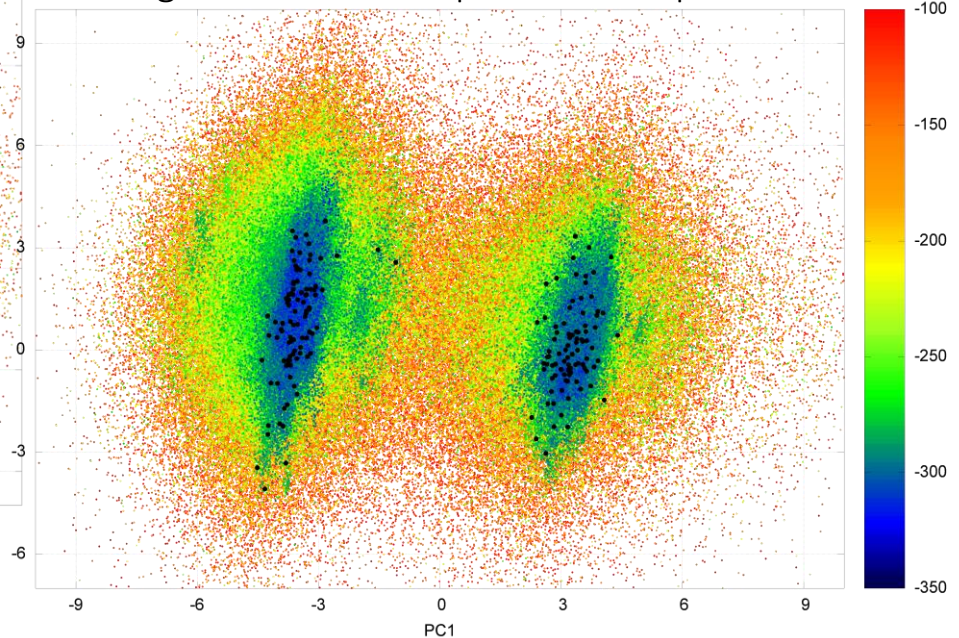
Sapin et al. ACM *GECCO* 2016

Improvement Operator in Exploration-Exploitation Trade-off



Structures in hall of fame obtained for SOD1 enzyme projected onto first two coordinates and color-coded by Rosetta score12 energies.

Hall of fame obtained with neighborhood- and lineage-aware local improvement operator

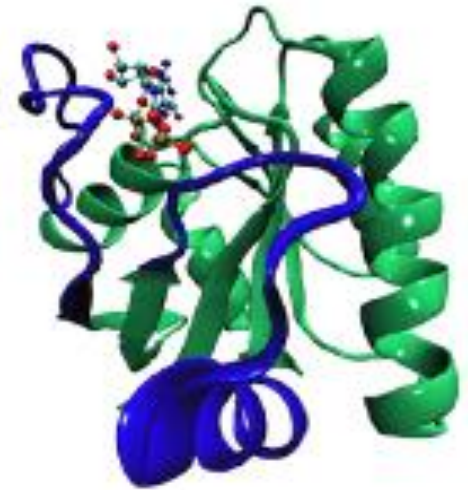
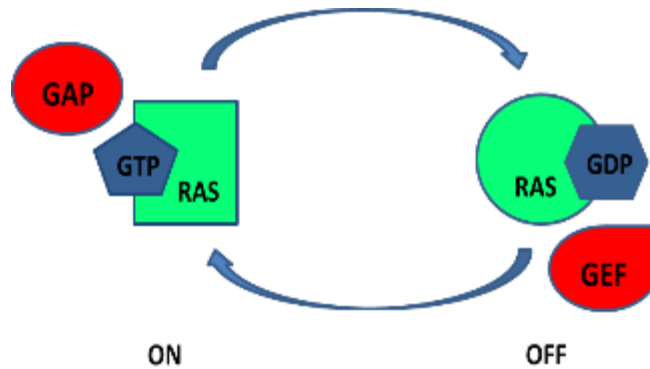
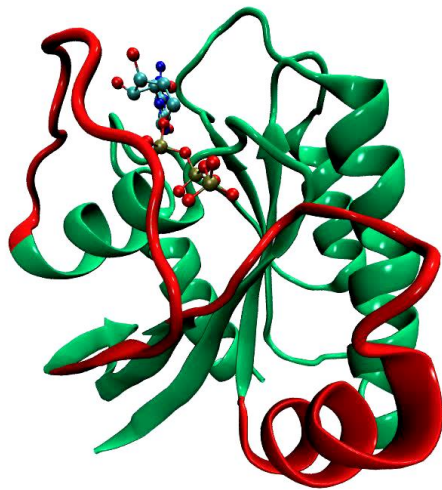


Sapin et al. *ACM GECCO* 2016

Sapin et al. *IEEE/ACM Trans Comput Biol & Bioinf* 2016

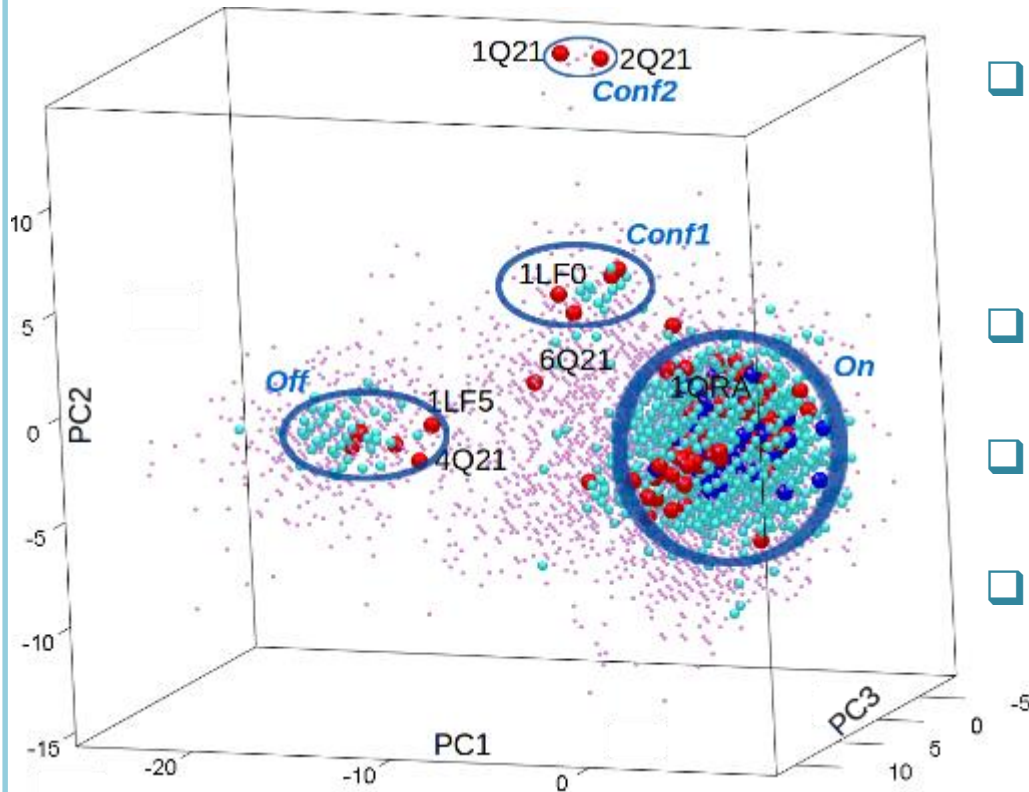
Study of H-Ras

Wildtype and Oncogenic Variants



H-Ras switching between its GTP-bound (red) and GDP-bound (blue) structures

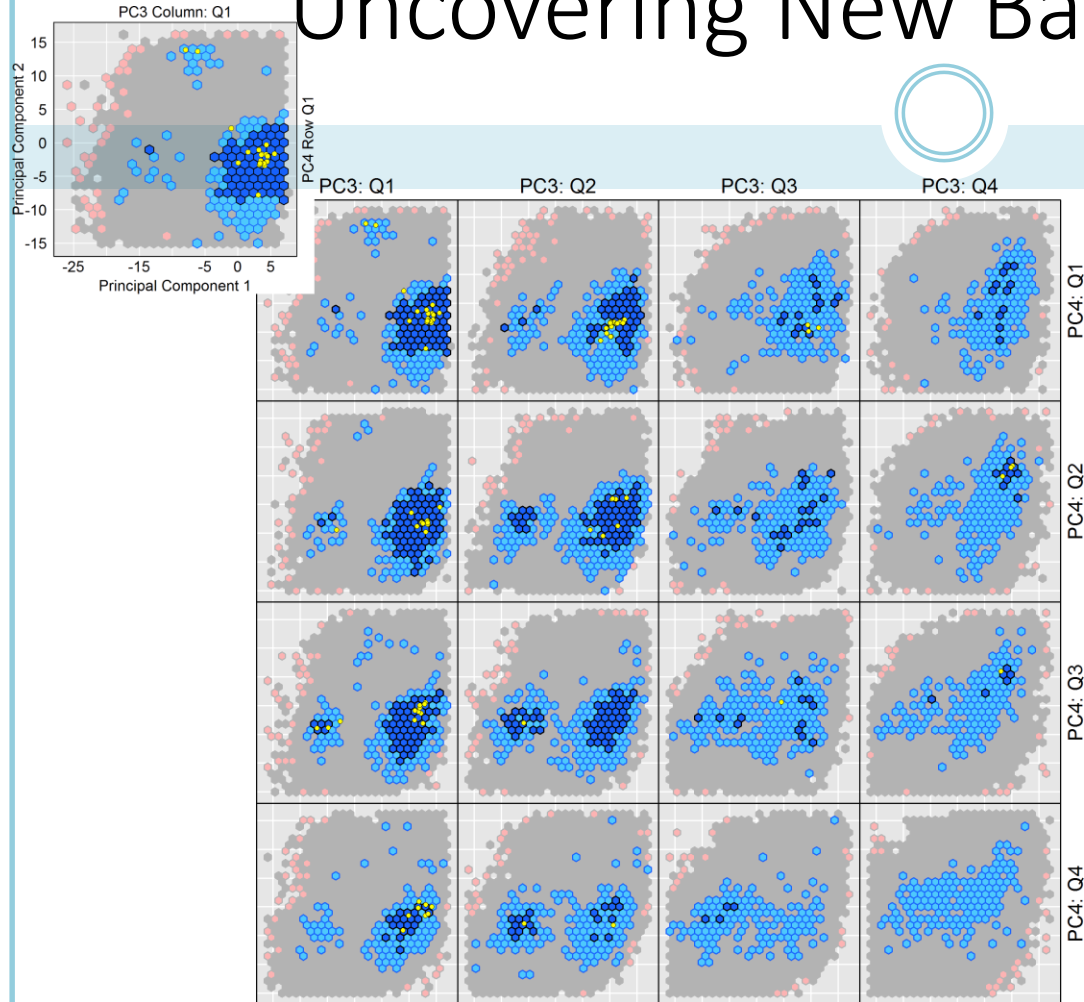
Uncovering New Basins in H-Ras



- ❑ Lowest-energy structures in hall of fame (blue to pink for low to high energy color scheme) projected onto top three coordinates/PCs.
- ❑ Projections of experimentally-known structures of WT and variants are in red.
- ❑ On and off states of H-Ras reproduced in greater detail.
- ❑ Two new basins, named Conf1 and Conf2 emerge.

Clausen et al. PLOS Comput Biol 2015
Sapin et al. BMC Genomics 2016

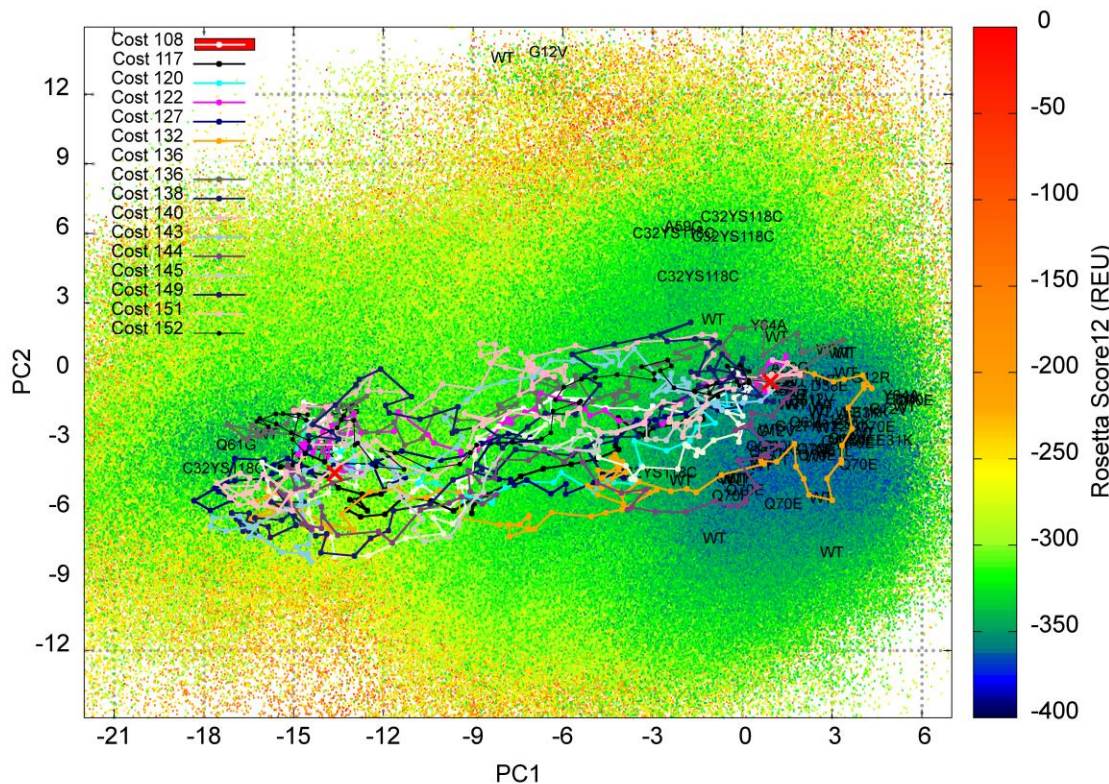
Uncovering New Basins in H-Ras



- ❑ Hall of fame conditioned on PC3 and PC4 and shown on PC1-PC2 hexagonal bin plots.
- ❑ Color scheme of {dark blue, light blue, gray, pink} for quantiles of {0, 20, 60, 99, 100}% of Rosetta score12 energies.
- ❑ On basin wider and deeper than Off basin; Conf1 and Conf2 less stable.
- ❑ Large region of On basin not populated in wet laboratory

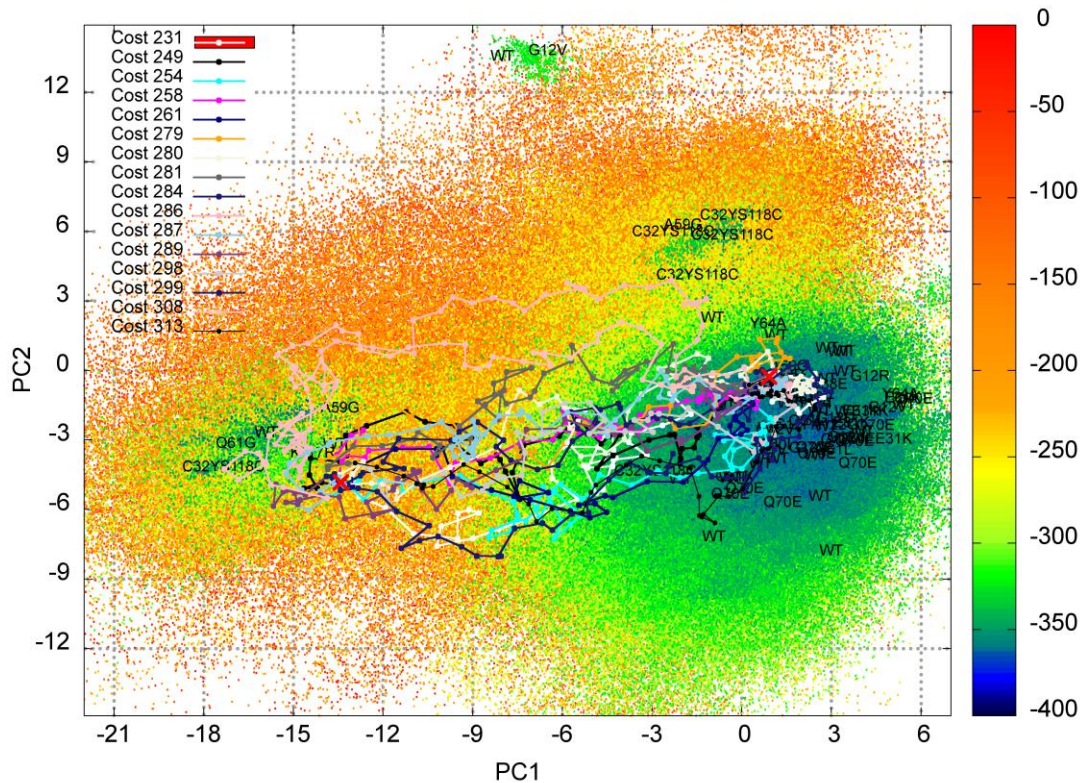
Sapin et al. *BMC Genomics* 2016

Energy Landscape and Low-Cost Paths of On \rightarrow Off Switching in H-Ras WT



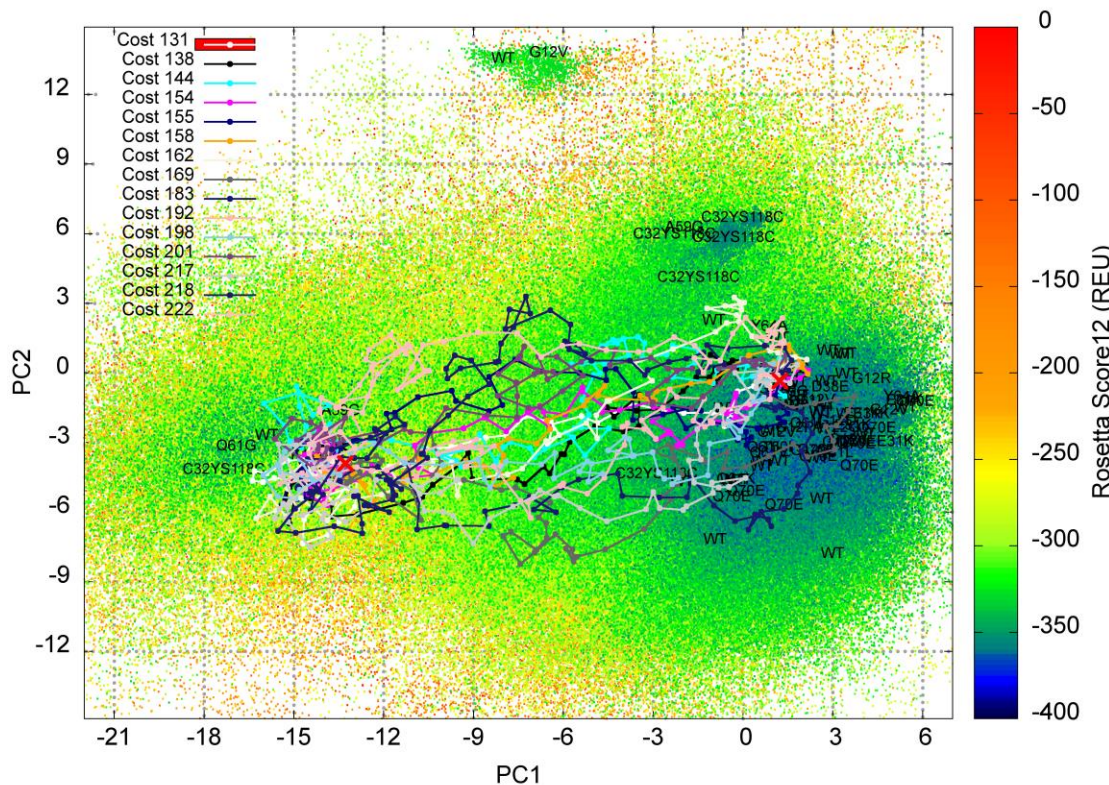
- Comparison of H-Ras WT and 7 disease-related variants.
- Maps queried for low-cost paths connecting PDB id 1QRA (representative of On) to PDB id 4Q21 (representative of Off).
- Single-mutant variants (except for Q61L and G12V) incur significantly higher On \rightarrow Off energetic costs than the WT.
- Most oncogenic mutations rigidify H-Ras.

Energy Landscape and Low-Cost Paths of On \rightarrow Off Switching in H-Ras G12C Variant



- Significantly elevated barrier separates On from Off basins in G12C oncogenic variant.
- Result of structural rigidification: constitutive activation (always on).
- This mechanism observed, to lesser extent, in many other oncogenic variants.
- Off-pathway Conf1 and Conf2 basins more prominent in G12C, informative for possible molecular interventions.

Energy Landscape and Low-Cost Paths of On \rightarrow Off Switching in H-Ras Y32CC118S



- Higher On \rightarrow Off costs than in the WT in this double mutant.
- Off-pathway Conf1 and Conf2 basins more prominent than in WT and in G12C, informative for possible molecular interventions.
- Conf1 broader and deeper than in WT, indicative of a third equally-stable emerging basin separated by high-energy barrier from On basin.

Thermodynamic Hypothesis for Impact of Single- and Double-point Mutations

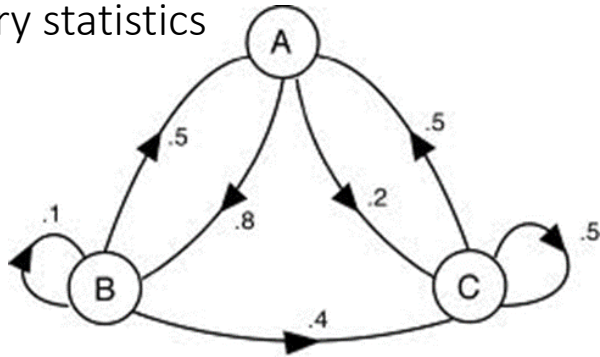
Most mutations directly impact conformational switching in H-Ras and some introduce additional semi-stable or stable off-path basins

Sapin et al. *BMC Genomics* 2016

Sequence	$(\mu, \sigma)_{\text{Cost}}$ (REU)	$(\mu, \sigma)_{\text{HighestEnergy}}$ (REU)	$(\mu, \sigma)_{\text{Nr. Edges}}$
WT	(127.6, 7.90)	(-277.3, 15.2)	(64.2, 15.6)
G12S	(143, 40.9)	(-259.0, 92.0)	(73.0, 22.1)
G12C	(266.4, 18.2)	(-139.3, 24.4)	(60.0, 9.8)
G12D	(140.4, 15.5)	(-253.9, 15.9)	(54.6, 8.6)
G12V	(132.3, 13.5)	(-236.3, 83.4)	64.6, 13.1)
Q61L	(161.3, 45.2)	(-240.7, 21.8)	(64.1, 9.2)
Y32CC118S	(158.2, 18.9)	(-257.5, 18.1)	(63.9, 10.2)
R164AQ165V	(159.7, 21.3)	(-245.6, 23.8)	(65.9, 7.1)

Future Algorithmic Work

Markov State Models (MSMs) as discrete kinetics models that additionally permit calculation of summary statistics



- Issues to address: definition of states and state-to-state transition probabilities
- Preliminary investigation uses clustering for states and Boltzmann-like probabilities

- Promising preliminary results on comparison of expected number of edges from any vertex v_i to an v_j in A

$$t_i = 1 + \sum_{v_j \in A} P_{ij} \cdot 0 + \sum_{v_j \notin A} P_{ij} \cdot t_j$$

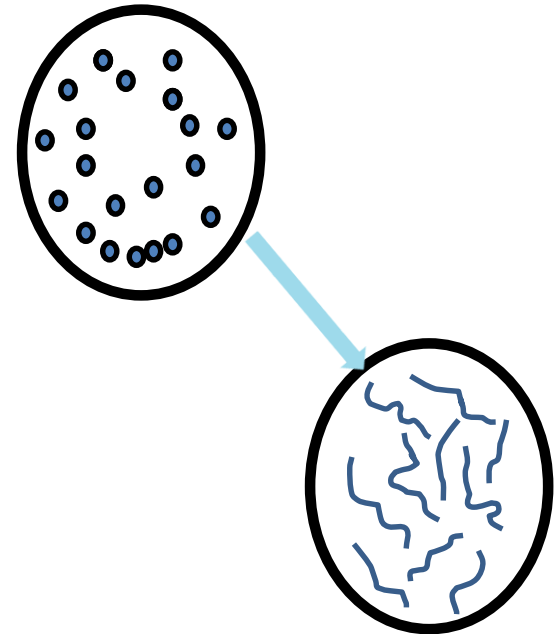
H-Ras Sequence	Transition	Expected Nr. Of Edges
WT	Off \rightarrow On	3.4×10^8
	On \rightarrow Off	3.9×10^{10}
Q61L	Off \rightarrow On	1.9×10^{12}
	On \rightarrow Off	3.8×10^{14}

Direct positive correlation between expected nr. of edges and physical transition time

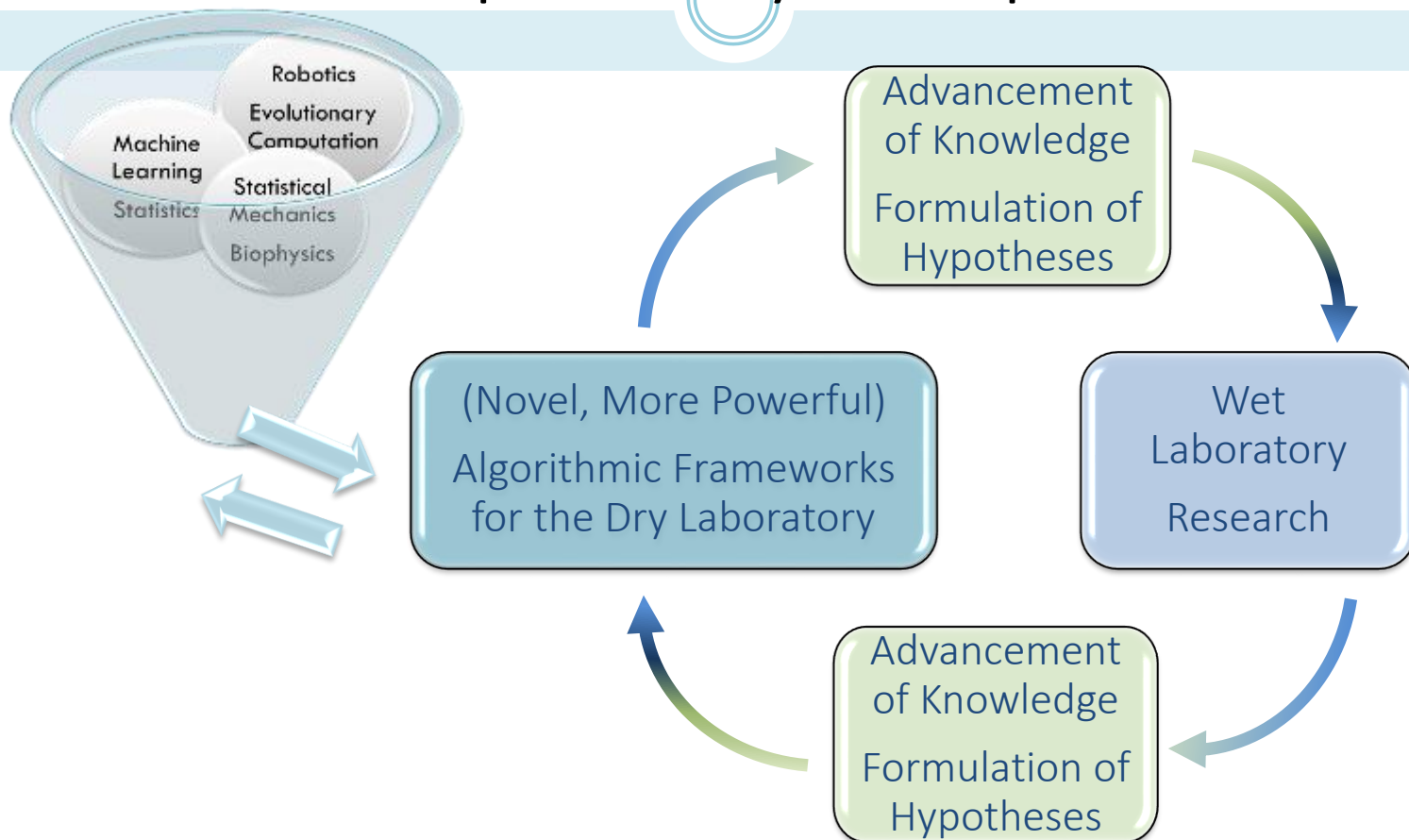
Rethinking Role of Mapping-driven EAs



- ❑ A map of samples corresponding to structures will be dominated by basins
- ❑ Energy barriers connecting basins important to map when goal is to enrich landscape with kinetics
- ❑ Barriers typically more sparsely sampled than basins with stochastic optimization frameworks
- ❑ ***Change objective: evolve paths***
 - ❑ Many issues to address:
 - ❑ A carefully-designed initial population
 - ❑ Variation operators to yield path offspring from path parents
 - ❑ Path fitness function that does not hamper path diversity



Integrative Approaches: Human Biology is Exceptionally Complex



Thank you for your attention!



Collaborators at George Mason University:

Kenneth A De Jong [evolutionary computation]

Daniel Barbara [machine learning]

Barney Bishop [biochemistry]

Daniel B Carr [statistical graphics]

Nadine Kabbani [molecular biology, neuroscience]

Monique van Hoek [molecular biology]

Collaborators at Other Institutions:

Ruth Nussinov, Buyong Ma [molecular biology, National Cancer Institute at NIH]

Carla Mattos [biochemistry and structural biology, Northeastern University]

Adrian Roitberg [chemistry, University of Florida at Gainesville]

Erion Plaku [algorithmic robotics, Catholic University of America]

John S Choy [molecular genetics and cell biology, Catholic University of America]

Aron Geurts, Christopher McDermott-Roe [physiology, human diseases, Medical College of Wisconsin]

Nurit Haspel [computational biology, University of Massachusetts Boston]

Juan Cortes [robot motion planning, CNRS-LAAS Toulouse]

Work currently supported by:

NSF SI2-SSE Grant No. 1440581

NSF CCF-AF Grant No. 1421001

NSF IIS-CAREER Grant No. 1415250